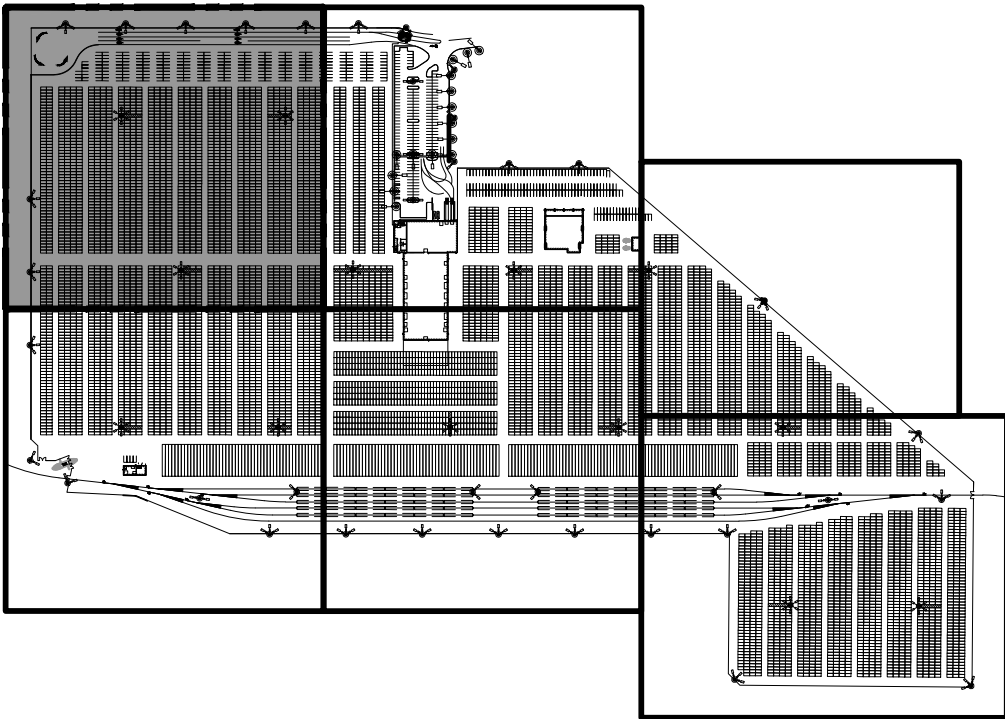


MATCH LINE SEE SHEET D1.1

MATCH LINE SEE SHEET D1.2



## GENERAL NOTES

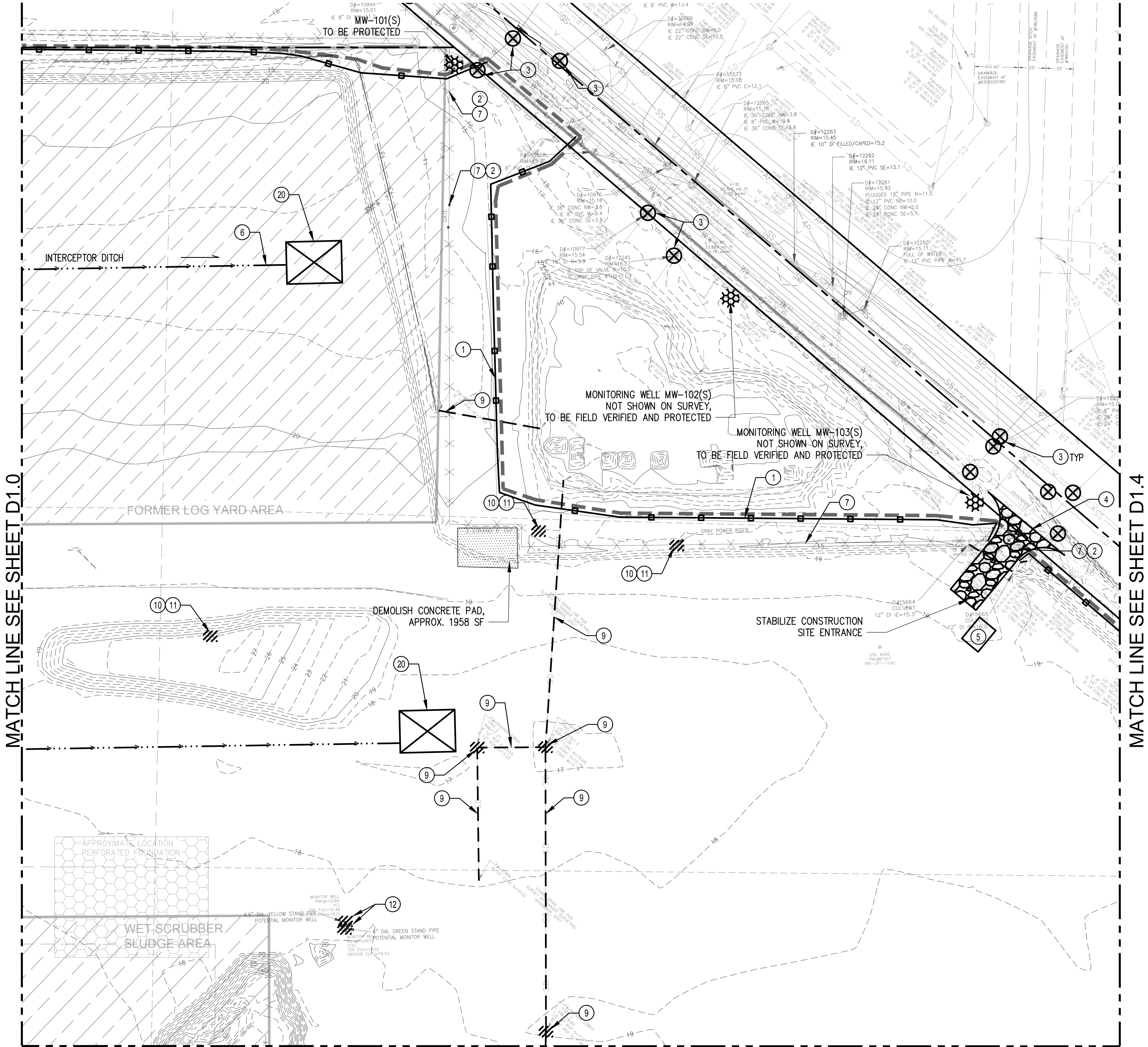
- REFER TO SHEET D1.7 FOR DEMOLITION NOTES AND TEMPORARY EROSION AND SEDIMENTATION CONTROL NOTES.
- EXISTENCE OF PERFORATED OR INTACT FOUNDATIONS ARE UNKNOWN. CONTRACTOR SHALL DEMOLISH AS NECESSARY TO CONSTRUCT UTILITIES.
- EXISTING TACOMA PUBLIC UTILITY (TPU) POLES, GUY WIRES, AND ASSOCIATED HANDHOLES IDENTIFIED ARE TO BE REMOVED BY CONTRACTOR UPON INSTALLATION OF NEW POWER POLE AND ELECTRICAL SERVICE DROP TO BE COMPLETED BY TPU. CONTRACTOR TO COORDINATE WITH TPU.
- EXISTING WETLAND, ASSOCIATED BUFFER, STORMWATER PONDS, AND STORMWATER SWALES SHALL NOT BE DISTURBED.

## TESC AND DEMO NOTES

- INSTALL SILT FENCE PER DETAIL 4 ON SHEET D1.8
- ESTABLISH TEMPORARY CONSTRUCTION FENCE, SEE FENCING PLAN ON C1.0-C1.5
- INSTALL INLET PROTECTION PER DETAIL 1 ON SHEET D1.8
- STABILIZE CONSTRUCTION ENTRANCE PER DETAIL 3 ON D1.8
- ESTABLISH TIRE WASH, DISCHARGE IN ACCORDANCE WITH SWPPP AND SDAP PERMIT REQUIREMENTS
- CONSTRUCT INTERCEPTOR DITCHES
- REMOVE EXISTING FENCE AND GATE
- CLEAR AND GRUB EXISTING VEGETATION
- REMOVE EXISTING SW STRUCTURE AND PIPE
- REMOVE EXISTING UTILITY STRUCTURE
- CUT AND CAP EXISTING UTILITY
- DECOMMISSION EXISTING MONITORING WELL
- FIRE HYDRANT/VALVE TO BE RELOCATED BY TACOMA RAIL AND TACOMA WATER
- PROTECT EXISTING TREES
- REMOVE EXITING POWER POLE, SEE NOTE 3
- REMOVE EXISTING GUY WIRE, SEE NOTE 3
- REMOVE EXISTING HANDHOLE, SEE NOTE 3
- REMOVE EXISTING LIGHTPOLE
- REMOVE, SALVAGE, AND PROVIDE TO PORT EXISTING SIGN
- SEDIMENT TRAP STORMWATER TREATMENT AND DISCHARGE HOLDING TANKS, SEE EROSION CONTROL GENERAL NOTES 23 AND 24 SHEET D1.7
- INSTALL HIGH VISIBILITY FENCING AT LIMITS OF WORK, WETLAND BUFFER LIMITS, AND TRANSMISSION TOWER
- TRACK DEMO TO PROPERTY LINE
- PROTECT EXISTING TPU WATER METER

<b>D1.0</b> 19 OF 163	<b>PARCEL 77 AUTO IMPORT TERMINAL</b>				<b>APPROVED:</b>		<b>CMB</b>		<b>3/13/2018</b>		<b>Port of Tacoma</b> 2407 North 31st Street, Suite 100 Tacoma, Washington 98407 (253) 396-0150 Fax (253) 396-0162 P.O. BOX 1837 TACOMA, WA 98401 (253) 396-5841	
	<b>TESC, DEMOLITION, AND REMEDIATION PLAN</b>				<b>DATE</b>		<b>CHECKED BY</b>		<b>DATE</b>		<b>kpff</b>	
	<b>AREA 1</b>				<b>DATE</b>		<b>SWK</b>		<b>3/16/2018</b>		<b>REVISION:</b>	
	<b>SECTION: 3E</b>				<b>DATE</b>		<b>DIRECTOR</b>		<b>PROJ. ENGR</b>		<b>MARK:</b>	
CONT/CONS: 070770	TOWNSHIP: 21N	RANGE: 3E	SECTION: 36	DATE: 07/07/20	PRINTED BY: cbenneth	May 10, 2018	TACOMA WA 98401-1837		BY:		APPR:	
M. ID: 201020.01	DATE-HRZ: W83-SF	VERT: PORT OF TACOMA BM#	PARCEL: MUI TYPE	DRAWING SCALE: AS SHOWN	TACOMA WA 98401-1837		DATE:		BY:		APPR:	
PHASE: BID SET												



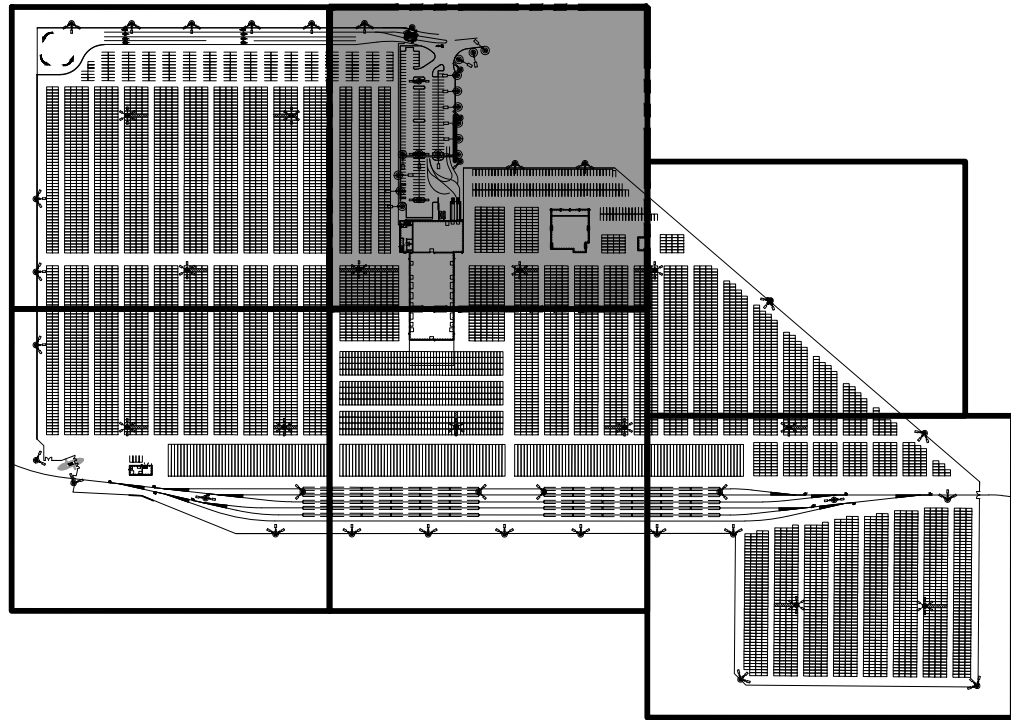


### GENERAL NOTES

- REFER TO SHEET D1.7 FOR DEMOLITION NOTES AND TEMPORARY EROSION AND SEDIMENTATION CONTROL NOTES.
- EXISTENCE OF PERFORATED OR INTACT FOUNDATIONS ARE UNKNOWN. CONTRACTOR SHALL DEMOLISH AS NECESSARY TO CONSTRUCT UTILITIES.
- EXISTING TACOMA PUBLIC UTILITY (TPU) POLES, GUY WIRES, AND ASSOCIATED HANDHOLES IDENTIFIED ARE TO BE REMOVED BY CONTRACTOR UPON INSTALLATION OF NEW POWER POLE AND ELECTRICAL SERVICE DROP TO BE COMPLETED BY TPU. CONTRACTOR TO COORDINATE WITH TPU.
- EXISTING WETLAND, ASSOCIATED BUFFER, STORMWATER PONDS, AND STORMWATER SWALES SHALL NOT BE DISTURBED.

### TESC AND DEMO NOTES



- INSTALL SILT FENCE PER DETAIL 4 ON SHEET D1.8
- ESTABLISH TEMPORARY CONSTRUCTION FENCE, SEE FENCING PLAN ON C1.0-C1.5
- INSTALL INLET PROTECTION PER DETAIL 1 ON SHEET D1.8
- STABILIZE CONSTRUCTION ENTRANCE PER DETAIL 3 ON D1.8
- ESTABLISH TIRE WASH, DISCHARGE IN ACCORDANCE WITH SWPPP AND SDAP PERMIT REQUIREMENTS
- CONSTRUCT INTERCEPTOR DITCHES
- REMOVE EXISTING FENCE AND GATE
- CLEAR AND GRUB EXISTING VEGETATION
- REMOVE EXISTING SW STRUCTURE AND PIPE
- REMOVE EXISTING UTILITY STRUCTURE
- CUT AND CAP EXISTING UTILITY
- DECOMMISSION EXISTING MONITORING WELL
- FIRE HYDRANT/VALVE TO BE RELOCATED BY TACOMA RAIL AND TACOMA WATER
- PROTECT EXISTING TREES
- REMOVE EXISTING POWER POLE, SEE NOTE 3
- REMOVE EXISTING GUY WIRE, SEE NOTE 3
- REMOVE EXISTING HANDHOLE, SEE NOTE 3
- REMOVE EXISTING LIGHTPOLE
- REMOVE, SALVAGE, AND PROVIDE TO PORT EXISTING SIGN
- SEDIMENT TRAP STORMWATER TREATMENT AND DISCHARGE HOLDING TANKS, SEE EROSION CONTROL GENERAL NOTES 23 AND 24 SHEET D1.7
- INSTALL HIGH VISIBILITY FENCING AT LIMITS OF WORK, WETLAND BUFFER LIMITS, AND TRANSMISSION TOWER
- TRACK DEMO TO PROPERTY LINE
- PROTECT EXISTING TPU WATER METER

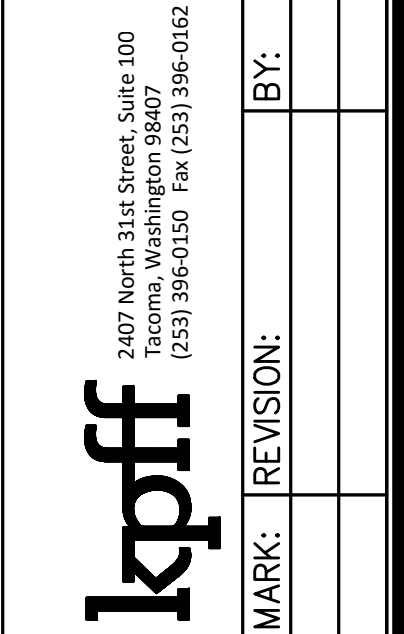
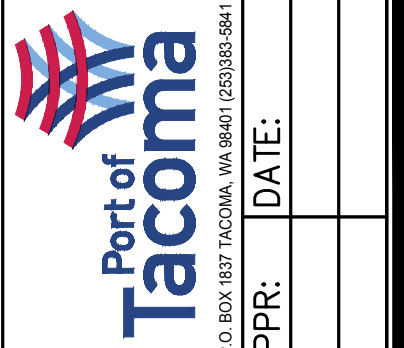


KEY PLAN

NTS

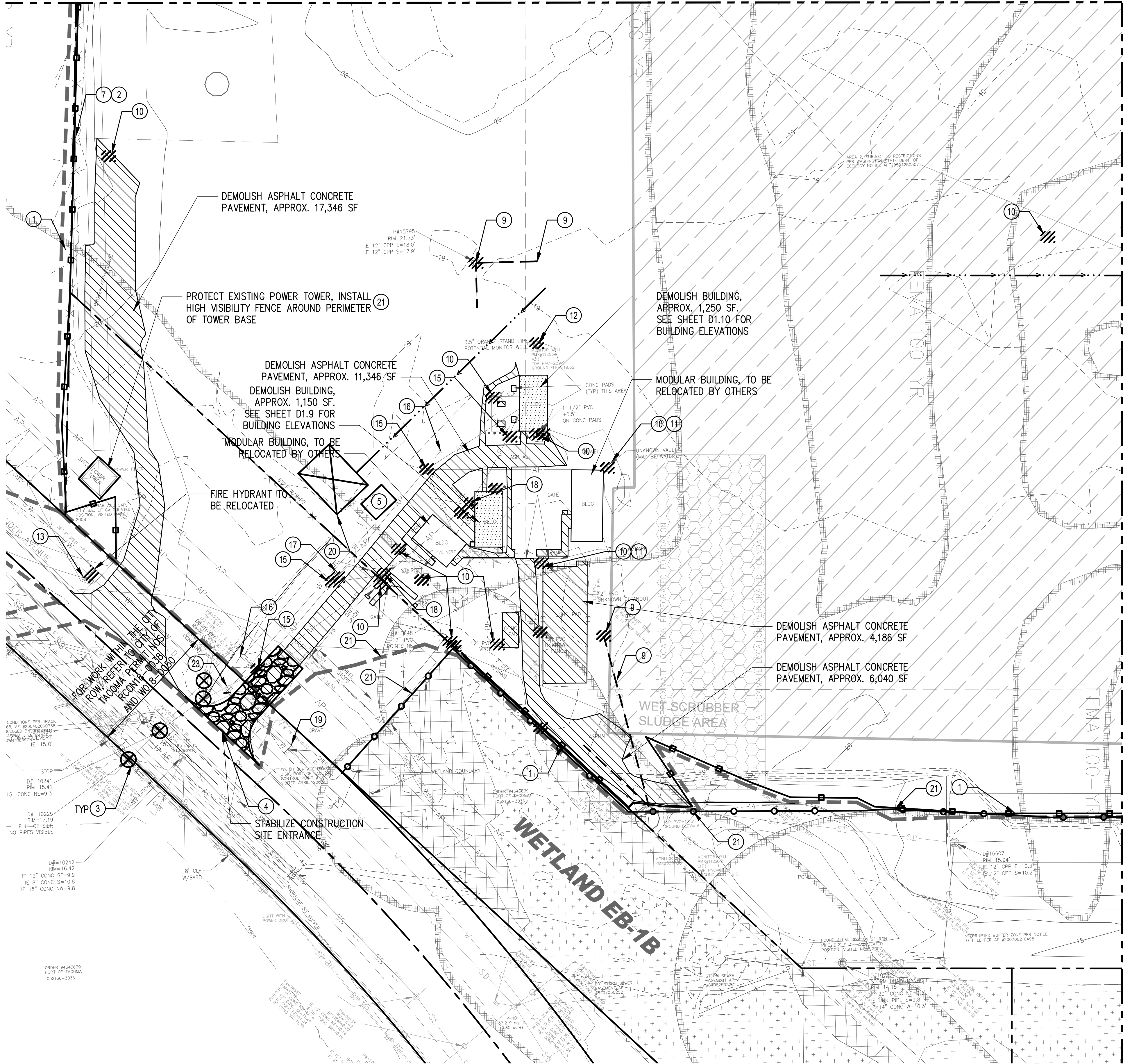


<div>D1.1</div> <div>20 OF 163</div>				PARCEL 77 AUTO IMPORT TERMINAL										APPROVED:		CMB		3/13/2018		<div></div>		<div></div>		<div>Port of Tacoma P.O. BOX 1837 TACOMA, WA 98401 2533083-8841</div>																																																																																																																																																																																																																																																																																																																																																																																																																																																																																																																																																																																																																																																																																																																																																																																																																																																																																																																																																																																																																																																																																																																																																																																																																																																																																																																																																																																																																																																																																																																	
TESC, DEMOLITION, AND REMEDIATION PLAN				AREA 2								CHECKED BY		DATE																																																																																																																																																																																																																																																																																																																																																																																																																																																																																																																																																																																																																																																																																																																																																																																																																																																																																																																																																																																																																																																																																																																																																																																																																																																																																																																																																																																																																																																																																																																											
												SWK		3/16/2018																																																																																																																																																																																																																																																																																																																																																																																																																																																																																																																																																																																																																																																																																																																																																																																																																																																																																																																																																																																																																																																																																																																																																																																																																																																																																																																																																																																																																																																																																																																											
DIRECTOR				ENG. DATE				PROJ. ENGR				DATE																																																																																																																																																																																																																																																																																																																																																																																																																																																																																																																																																																																																																																																																																																																																																																																																																																																																																																																																																																																																																																																																																																																																																																																																																																																																																																																																																																																																																																																																																																																													
PRINTED BY:				cbennett				May 10, 2018																																																																																																																																																																																																																																																																																																																																																																																																																																																																																																																																																																																																																																																																																																																																																																																																																																																																																																																																																																																																																																																																																																																																																																																																																																																																																																																																																																																																																																																																																																																																	
PORT ADDRESS: ONE SITCUM PLAZA																																																																																																																																																																																																																																																																																																																																																																																																																																																																																																																																																																																																																																																																																																																																																																																																																																																																																																																																																																																																																																																																																																																																																																																																																																																																																																																																																																																																																																																																																																																																									





MATCH LINE SEE SHEET D1.0



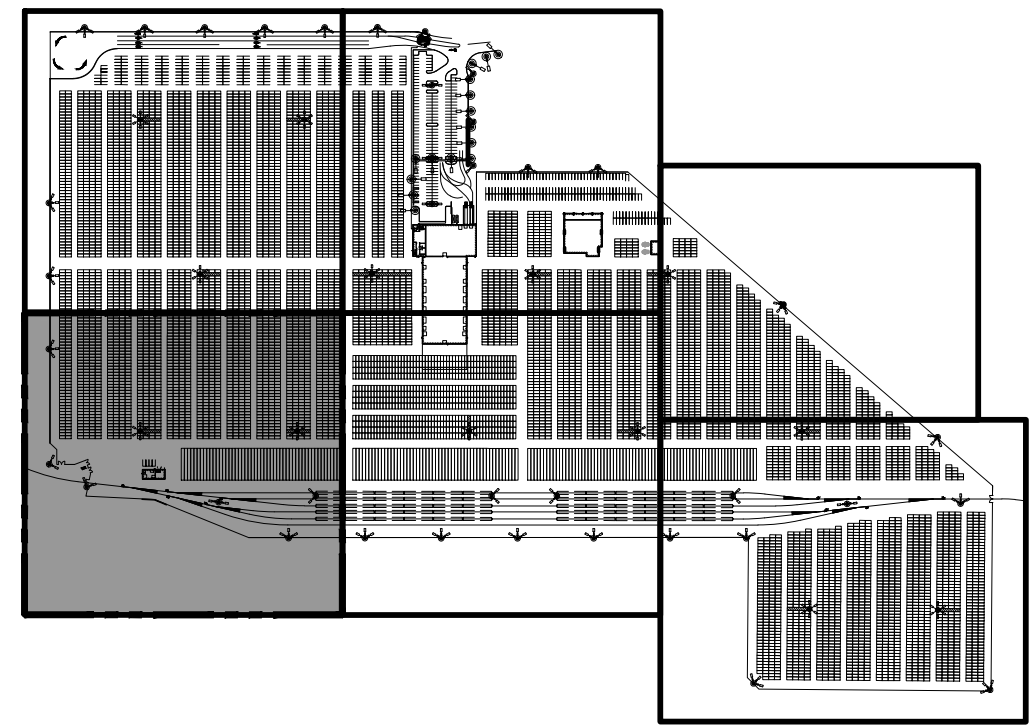
MATCH LINE SEE SHEET D1.3

## GENERAL NOTES

- REFER TO SHEET D1.7 FOR DEMOLITION NOTES AND TEMPORARY EROSION AND SEDIMENTATION CONTROL NOTES.
- EXISTENCE OF PERFORATED OR INTACT FOUNDATIONS ARE UNKNOWN. CONTRACTOR SHALL DEMOLISH AS NECESSARY TO CONSTRUCT UTILITIES.
- EXISTING TACOMA PUBLIC UTILITY (TPU) POLES, GUY WIRES, AND ASSOCIATED HANDHOLES IDENTIFIED ARE TO BE REMOVED BY CONTRACTOR UPON INSTALLATION OF NEW POWER POLE AND ELECTRICAL SERVICE DROP TO BE COMPLETED BY TPU. CONTRACTOR TO COORDINATE WITH TPU.
- EXISTING WETLAND, ASSOCIATED BUFFER, STORMWATER PONDS, AND STORMWATER SWALES SHALL NOT BE DISTURBED.

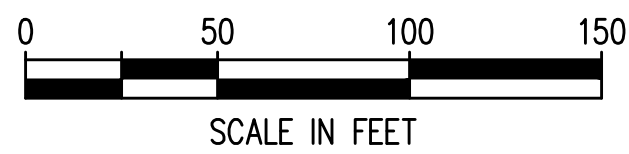
## TESC AND DEMO NOTES

- INSTALL SILT FENCE PER DETAIL 4 ON SHEET D1.8
- ESTABLISH TEMPORARY CONSTRUCTION FENCE, SEE FENCING PLAN ON C1.0-C1.5
- INSTALL INLET PROTECTION PER DETAIL 1 ON SHEET D1.8
- STABILIZE CONSTRUCTION ENTRANCE PER DETAIL 3 ON D1.8
- ESTABLISH TIRE WASH, DISCHARGE IN ACCORDANCE WITH SWPPP AND SDAP PERMIT REQUIREMENTS
- CONSTRUCT INTERCEPTOR DITCHES
- REMOVE EXISTING FENCE AND GATE
- CLEAR AND GRUB EXISTING VEGETATION
- REMOVE EXISTING SW STRUCTURE AND PIPE
- REMOVE EXISTING UTILITY STRUCTURE
- CUT AND CAP EXISTING UTILITY
- DECOMMISSION EXISTING MONITORING WELL
- FIRE HYDRANT/VALVE TO BE RELOCATED BY TACOMA RAIL AND TACOMA WATER
- PROTECT EXISTING TREES
- REMOVE EXISTING POWER POLE, SEE NOTE 3
- REMOVE EXISTING GUY WIRE, SEE NOTE 3
- REMOVE EXISTING HANDHOLE, SEE NOTE 3
- REMOVE EXISTING LIGHTPOLE
- REMOVE, SALVAGE, AND PROVIDE TO PORT EXISTING SIGN
- SEDIMENT TRAP STORMWATER TREATMENT AND DISCHARGE HOLDING TANKS, SEE EROSION CONTROL GENERAL NOTES 23 AND 24 SHEET D1.7
- INSTALL HIGH VISIBILITY FENCING AT LIMITS OF WORK, WETLAND BUFFER LIMITS, AND TRANSMISSION TOWER
- TRACK DEMO TO PROPERTY LINE
- PROTECT EXISTING TPU WATER METER



KEY PLAN

NTS

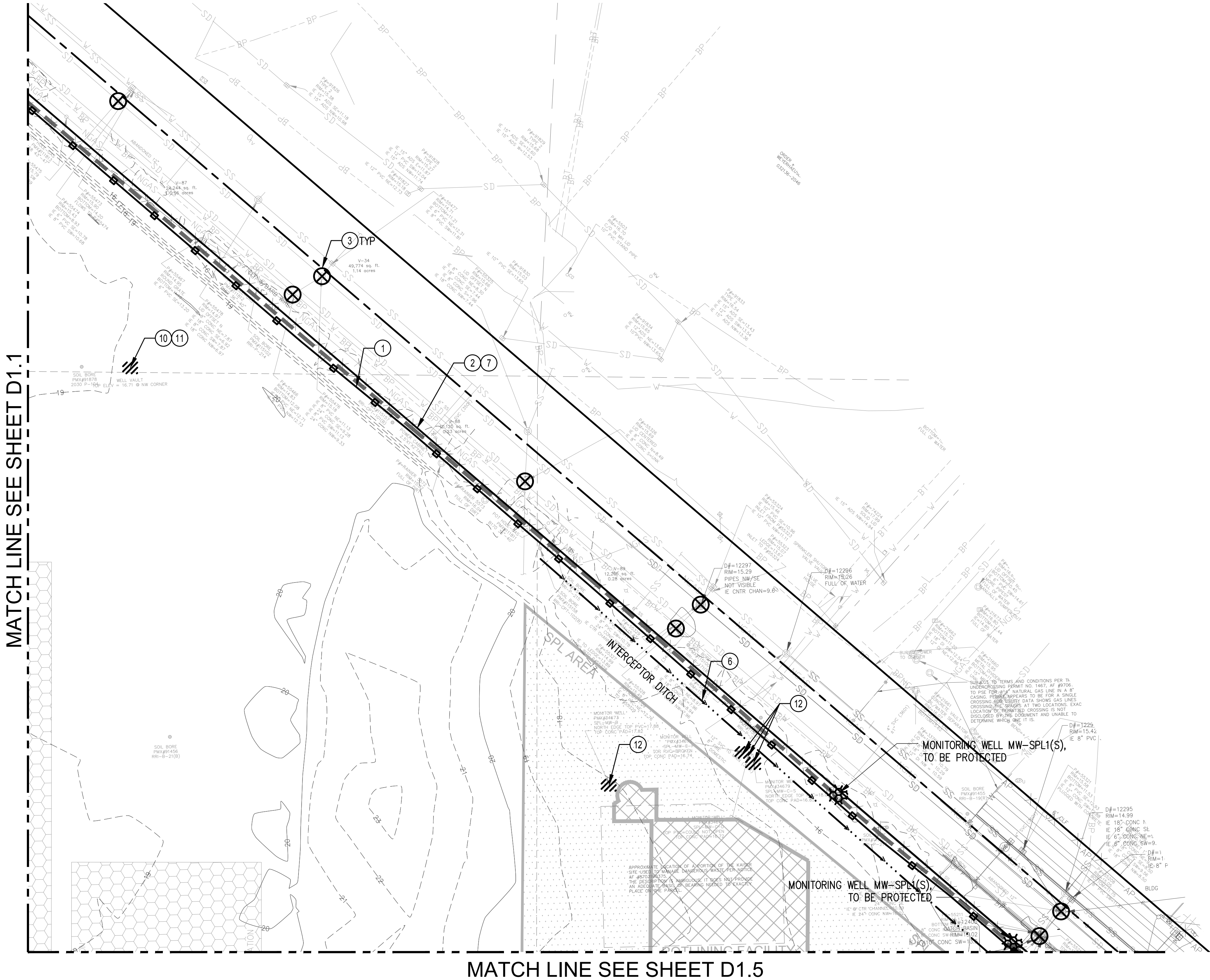


<b>D1.2</b> 21 OF 163	<b>PARCEL 77 AUTO IMPORT TERMINAL</b>				<b>APPROVED:</b>		<b>CMB</b>		<b>3/13/2018</b>		<b>Port of Tacoma</b> 2407 North 31st Street, Suite 100 Tacoma, Washington 98407 (253) 396-0150 Fax (253) 396-0162 P.O. BOX 1837 TACOMA, WA 98401 (253)396-5841				
	<b>TESC, DEMOLITION, AND REMEDIATION PLAN</b>				<b>DATE</b>		<b>CHECKED BY</b>		<b>DATE</b>		<b>kpff</b>				
	<b>AREA 3</b>				<b>DATE</b>		<b>SWK</b>		<b>DATE</b>		<b>REVISION:</b>				
	<b>CONTRACTOR:</b> 07070				<b>TOWNSHIP:</b> 21N		<b>RANGE:</b> 3E		<b>SECTION:</b> 36		<b>BY:</b>				
<b>M. ID:</b> 201020.01				<b>DAT-HRZ:</b> W83-SF				<b>VERT:</b> PORT OF TACOMA BM#				<b>MARK:</b>			
<b>PHASE:</b> BID SET				<b>PARCEL:</b> MULTI-USE				<b>DRAWING SCALE:</b> AS SHOWN				<b>DATE:</b>			
THIS DRAWING IS THE PROPERTY OF THE PORT OF TACOMA AND SHALL NOT BE USED ON OTHER WORK, DISCLOSED, COPIED, IN WHOLE OR IN PART, WITHOUT WRITTEN PERMISSION												<b>APPR:</b>		<b>DATE:</b>	







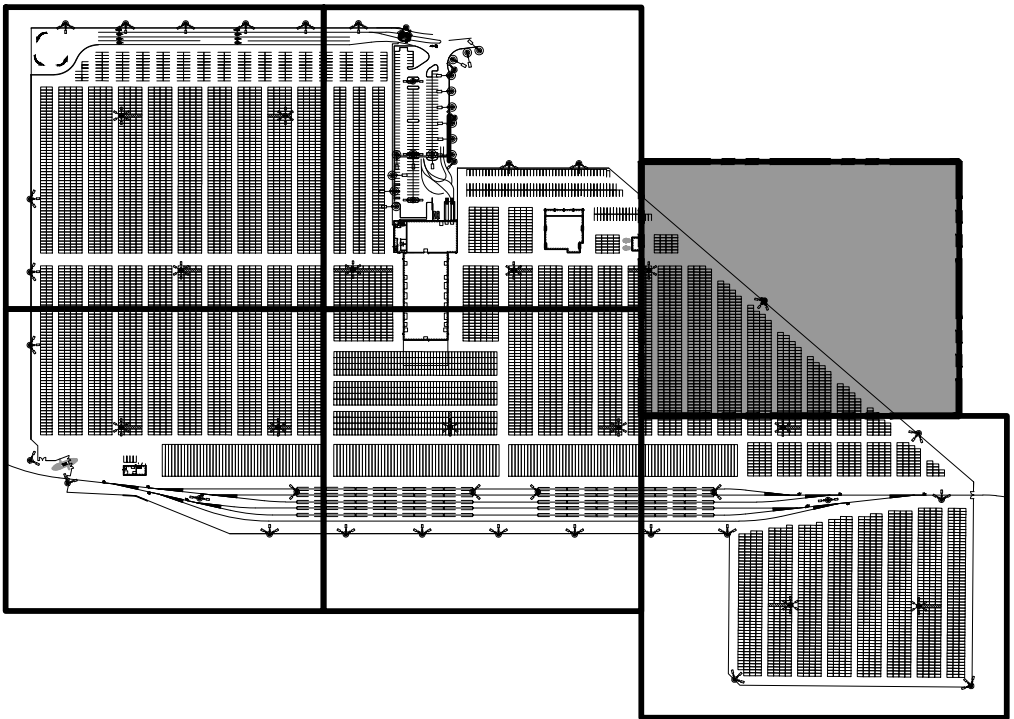




GENERAL NOTES

- REFER TO SHEET D1.7 FOR DEMOLITION NOTES AND TEMPORARY EROSION AND SEDIMENTATION CONTROL NOTES.
- EXISTENCE OF PERFORATED OR INTACT FOUNDATIONS ARE UNKNOWN. CONTRACTOR SHALL DEMOLISH AS NECESSARY TO CONSTRUCT UTILITIES.
- EXISTING TACOMA PUBLIC UTILITY (TPU) POLES, GUY WIRES, AND ASSOCIATED HANDHOLES IDENTIFIED ARE TO BE REMOVED BY CONTRACTOR UPON INSTALLATION OF NEW POWER POLE AND ELECTRICAL SERVICE DROP TO BE COMPLETED BY TPU. CONTRACTOR TO COORDINATE WITH TPU.
- EXISTING WETLAND, ASSOCIATED BUFFER, STORMWATER PONDS, AND STORMWATER SWALES SHALL NOT BE DISTURBED.

TESC AND DEMO NOTES

- INSTALL SILT FENCE PER DETAIL 4 ON SHEET D1.8
- ESTABLISH TEMPORARY CONSTRUCTION FENCE, SEE FENCING PLAN ON C1.0-C1.5
- INSTALL INLET PROTECTION PER DETAIL 1 ON SHEET D1.8
- STABILIZE CONSTRUCTION ENTRANCE PER DETAIL 3 ON D1.8
- ESTABLISH TIRE WASH, DISCHARGE IN ACCORDANCE WITH SWPPP AND SDAP PERMIT REQUIREMENTS
- CONSTRUCT INTERCEPTOR DITCHES
- REMOVE EXISTING FENCE AND GATE
- CLEAR AND GRUB EXISTING VEGETATION
- REMOVE EXISTING SW STRUCTURE AND PIPE
- REMOVE EXISTING UTILITY STRUCTURE
- CUT AND CAP EXISTING UTILITY
- DECOMMISSION EXISTING MONITORING WELL
- FIRE HYDRANT/VALVE TO BE RELOCATED BY TACOMA RAIL AND TACOMA WATER
- PROTECT EXISTING TREES
- REMOVE EXITING POWER POLE, SEE NOTE 3
- REMOVE EXISTING GUY WIRE, SEE NOTE 3
- REMOVE EXISTING HANDHOLE, SEE NOTE 3
- REMOVE EXISTING LIGHTPOLE
- REMOVE, SALVAGE, AND PROVIDE TO PORT EXISTING SIGN
- SEDIMENT TRAP STORMWATER TREATMENT AND DISCHARGE HOLDING TANKS, SEE EROSION CONTROL GENERAL NOTES 23 AND 24 SHEET D1.7
- INSTALL HIGH VISIBILITY FENCING AT LIMITS OF WORK, WETLAND BUFFER LIMITS, AND TRANSMISSION TOWER
- TRACK DEMO TO PROPERTY LINE
- PROTECT EXISTING TPU WATER METER

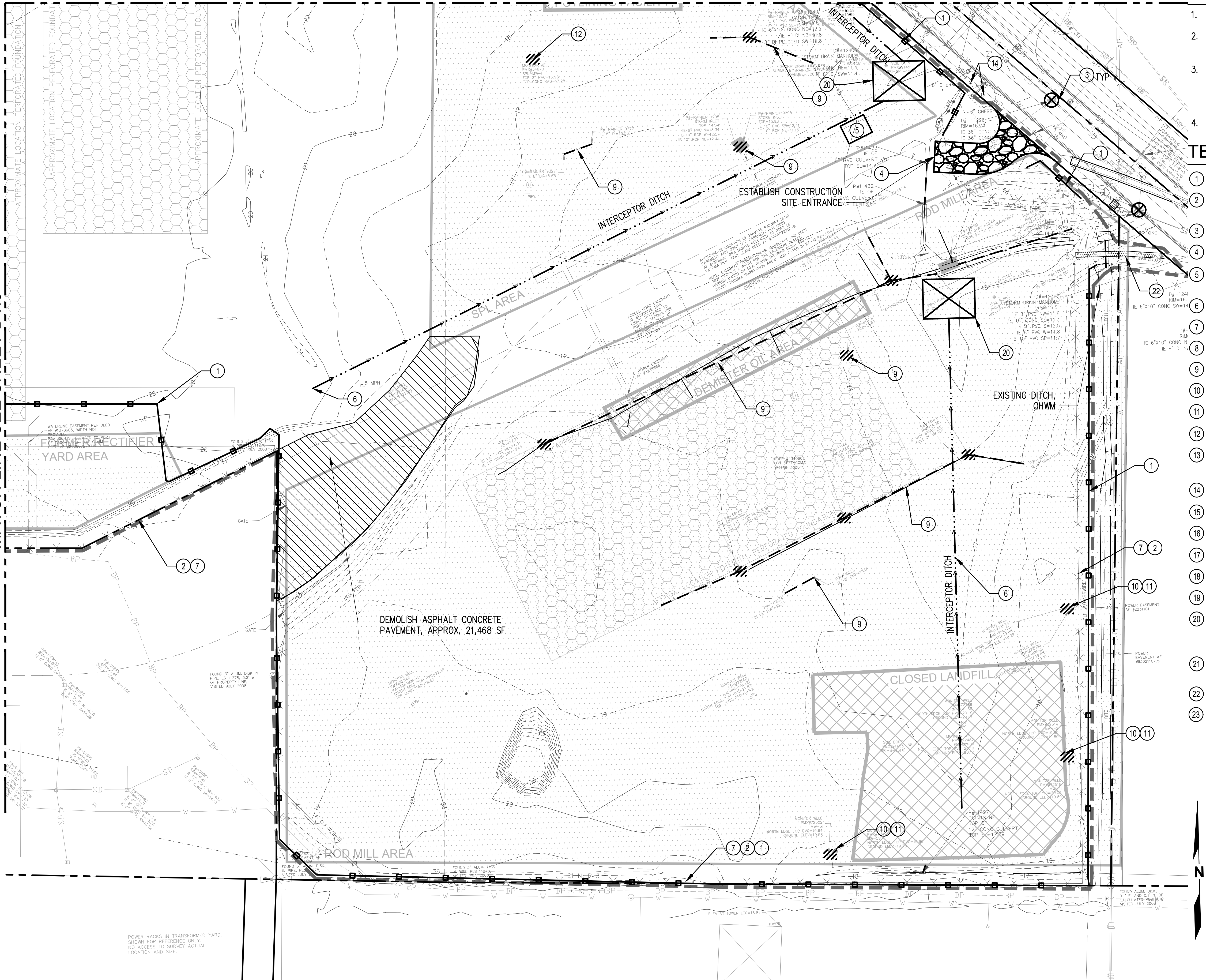


D1.4									
23 OF 163									
PARCEL 77 AUTO IMPORT TERMINAL									
TESC, DEMOLITION, AND REMEDIATION PLAN									
AREA 5									
CONT/CONS: 070770		TOWNSHIP: 21N		RANGE: 3E		SECTION: 36			
M. ID: 201020.01		DAT-HRZ: W83-SF		VERT: PORT OF TACOMA BM#					
PHASE: BID SET		PARCEL: MULTIPLE		DRAWING SCALE: AS SHOWN					
APPROVED:									
CMB		3/13/2018							
CHECKED BY		DATE							
SWK		3/16/2018							
DIRECTOR ENG. DATE		PROJ. ENGR DATE							
PRINTED BY: cbennett		May 10, 2018							
PORT ADDRESS: ONE SITCUM PLAZA									
TACOMA WA, 98401-1837									
									
									
2407 North 31st Street, Suite 100 Tacoma, Washington 98407 (253) 396-0150 Fax (253) 396-0162 P.O. BOX 1837 TACOMA, WA 98401 (253) 396-5841									
Port of Tacoma									
MARK:		REVISION:		BY:		APPR:		DATE:	



**MATCH LINE SEE SHEET D1.3**

MATCH LINE SEE SHEET D1.4



POWER RACKS IN TRANSFORMER YARD.  
SHOWN FOR REFERENCE ONLY.  
NO ACCESS TO SURVEY ACTUAL  
LOCATION AND SIZE.

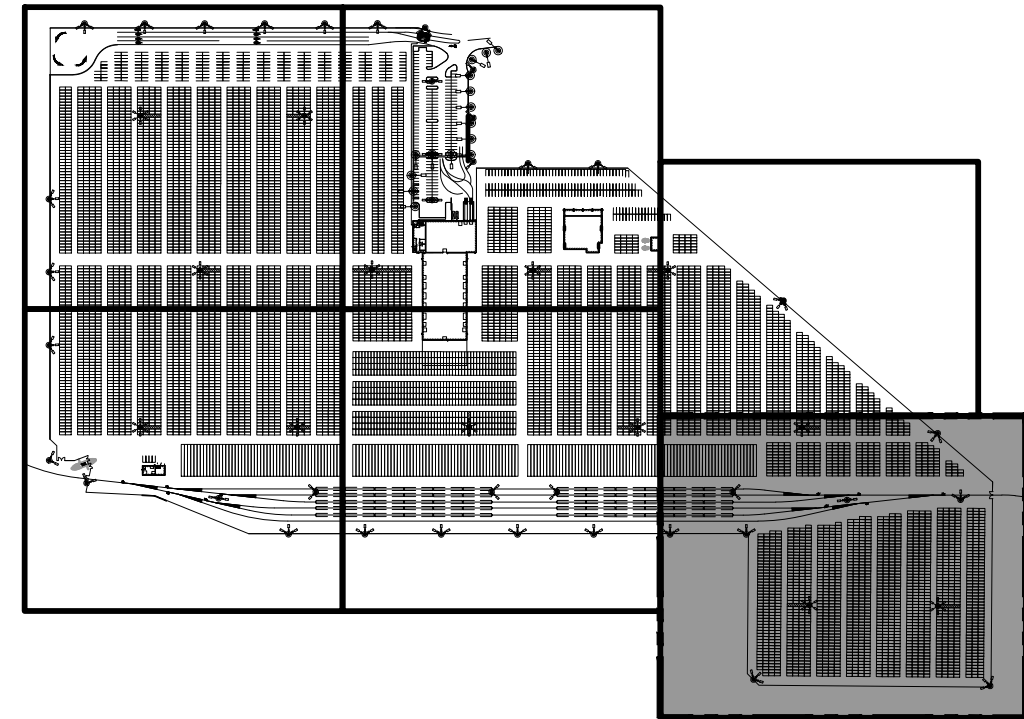
A horizontal scale bar with a black and white alternating pattern. It is labeled "SCALE IN FEET" below the bar. Major tick marks are labeled at 0, 50, 100, and 150 feet. There are also minor tick marks between the major ones, indicating 10-foot intervals.

## GENERAL NOTES

1. REFER TO SHEET D1.7 FOR DEMOLITION NOTES AND TEMPORARY EROSION AND SEDIMENTATION CONTROL NOTES.
2. EXISTENCE OF PERFORATED OR INTACT FOUNDATIONS ARE UNKNOWN. CONTRACTOR SHALL DEMOLISH AS NECESSARY TO CONSTRUCT UTILITIES.
3. EXISTING TACOMA PUBLIC UTILITY (TPU) POLES, GUY WIRES, AND ASSOCIATED HANDHOLES IDENTIFIED ARE TO BE REMOVED BY CONTRACTOR UPON INSTALLATION OF NEW POWER POLE AND ELECTRICAL SERVICE DROP TO BE COMPLETED BY TPU. CONTRACTOR TO COORDINATE WITH TPU.
4. EXISTING WETLAND, ASSOCIATED BUFFER, STORMWATER PONDS, AND STORMWATER SWALES SHALL NOT BE DISTURBED.

# TESC AND DEMO NOTES




1. INSTALL SILT FENCE PER DETAIL 4 ON SHEET D1.8
2. ESTABLISH TEMPORARY CONSTRUCTION FENCE, SEE FENCING PLAN ON C1.0-C1.5
3. INSTALL INLET PROTECTION PER DETAIL 1 ON SHEET D1.8
4. STABILIZE CONSTRUCTION ENTRANCE PER DETAIL 3 ON D1.8
5. ESTABLISH TIRE WASH, DISCHARGE IN ACCORDANCE WITH SWPPP AND SDAP PERMIT REQUIREMENTS
6. CONSTRUCT INTERCEPTOR DITCHES
7. REMOVE EXISTING FENCE AND GATE
8. CLEAR AND GRUB EXISTING VEGETATION
9. REMOVE EXISTING SW STRUCTURE AND PIPE
10. REMOVE EXISTING UTILITY STRUCTURE
11. CUT AND CAP EXISTING UTILITY
12. DECOMMISSION EXISTING MONITORING WELL
13. FIRE HYDRANT/VALVE TO BE RELOCATED BY TACOMA RAIL AND TACOMA WATER
14. PROTECT EXISTING TREES
15. REMOVE EXISTING POWER POLE, SEE NOTE 3
16. REMOVE EXISTING GUY WIRE, SEE NOTE 3
17. REMOVE EXISTING HANDHOLE, SEE NOTE 3
18. REMOVE EXISTING LIGHTPOLE
19. REMOVE, SALVAGE, AND PROVIDE TO PORT EXISTING SIGN
20. SEDIMENT TRAP STORMWATER TREATMENT AND DISCHARGE HOLDING TANKS, SEE EROSION CONTROL GENERAL NOTES 23 AND 24 SHEET D1.7
21. INSTALL HIGH VISIBILITY FENCING AT LIMITS OF WORK, WETLAND BUFFER LIMITS, AND TRANSMISSION TOWER
22. TRACK DEMO TO PROPERTY LINE
23. PROTECT EXISTING TPU WATER METER



# KEY PLAN

---

NTS

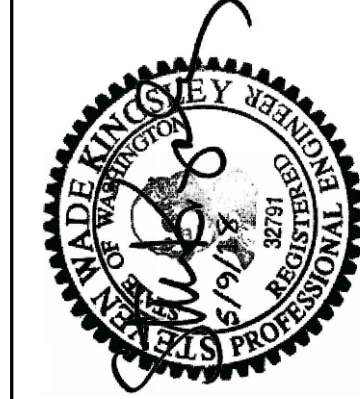
<div>D1.5</div> <div>24 OF 163</div>										<div>PARCEL 77 AUTO IMPORT TERMINAL</div> <div>TESC, DEMOLITION, AND REMEDIATION PLAN</div> <div>AREA 6</div>										<div>APPROVED:</div> <div><div>CMB3/13/2018</div><div>CHECKED BYDATE</div><div>SWK3/16/2018</div><div>DIRECTOR ENG. DATE</div><div>PROJ. ENGRDATE</div><div>PRINTED BY:cbennett May 10, 2018</div><div>PORT ADDRESS:ONE SITCUM PLAZA</div><div>TACOMA WA, 98401-1837</div></div>										<div></div> <div></div> <div><div>P.O. BOX 1837 TACOMA, WA 98401 (206)396-6841</div></div>										<div>MARK:REVISION:BY:APPR:DATE:</div>									
CONTRACT/CONS: 070770										TOWNSHIP: 21N										RANGE: 3E										SECTION: 36																			
M. ID: 201020.01										DAT-HRZ: W83-SF										VERT:										PORT OF TACOMA BM#																			
PHASE: BID SET										PARCEL: MULTIPLE										DRAWING SCALE: AS SHOWN																													





1. PORTIONS OF THE SITE REQUIRE CLEARING AND GRUBBING OF VEGETATION PRIOR TO PLACEMENT OF FILL.
2. GRASS AND WEED VEGETATION SHALL BE MOWED.
3. SITE STRIPPING IS REQUIRED IN AREAS WHERE FILL THICKNESS, BELOW AGGREGATE BASE, IS LESS THAN 12 INCHES. SITE STRIPPING SHALL BE TO A 3-INCH DEPTH OR TO AN AGREED UPON DEPTH UPON VISUAL INSPECTION AND DIRECTION BY THE ENGINEER.
4. WHERE FILL THICKNESS, BELOW AGGREGATE BASE, IS MORE THAN 12 INCHES, NO STRIPPING SHALL BE REQUIRED.
5. STRIPPING AREAS SHOWN IN PLAN REPRESENT GENERAL AREAS WHERE STRIPPING SHALL BE REQUIRED.

STRIPPING HORIZONTAL CONTROL POINTS		
POINT	NORTHING	EASTING
D1	708842.66	1174723.64
D2	708810.63	1175935.87
D3	708205.87	1175920.20
D4	708237.90	1174707.97
D5	708146.06	1174664.61
D6	708146.84	1174927.72
D7	707851.79	1174928.60
D8	707842.95	1174825.87
D9	707761.17	1174742.74
D10	707818.38	1174683.13
D11	707895.28	1174673.38
D12	707457.20	1176843.67
D13	707448.52	1177187.39
D14	707199.18	1177178.51
D15	707207.85	1176834.79



2407 North 31st Street, Suite 100  
Tacoma, Washington 98407  
(253) 396-0150 Fax (253) 396-0162

ffff

APPROVED:	CMB	3/13/2018
	<u>CHECKED BY</u>	<u>DATE</u>
	SWK	3/16/2018
	<u>DIRECTOR</u>	<u>ENG. DATE</u>
	PRINTED BY: cbennett	May 10, 2018
	PORT ADDRESS: ONE SITCUM PLAZA	
	TACOMA WA, 98401-1837	

**PARCEL 77 AUTO IMPORT TERMINAL**

**D1.6**

CONTRACT/CONS:	070770	TOWNSHIP:	21N	RANGE:	3E	SECTION:	36
M. ID:	201020.01	DAT-HRZ:	W83-SF	VERT:	PORT OF TACOMA BM#		
PHASE:	BID SET	PARCEL:	MULTIPLE				
		DRAWING SCALE:			AS SHOWN		

THIS DRAWING IS THE PROPERTY OF THE PORT OF TACOMA AND SHALL NOT BE USED ON OTHER WORK. DISCLOSED COPIED. IN WHOLE OR IN PART. WITHOUT WRITTEN PERMISSION



EROSION CONTROL GENERAL NOTES:

1.

MINIMUM EROSION CONTROL MEASURES SHALL INCLUDE:  
A. STABILIZED CONSTRUCTION ENTRANCES AND WHEEL WASHES.  
B. PERIMETER EROSION/SEDIMENTATION CONTROL.  
C. PROTECTION OF CATCH BASINS.  
D. STABILIZATION OF EXPOSED SOILS.  
E. INTERCEPTOR DITCHES  
F. SEDIMENT TRAPS  
G. HOLDING TANKS
2.

ALL EROSION CONTROL SHALL BE IN PLACE PRIOR TO CLEARING AND GRUBBING.
3.

EROSION CONTROL MEASURES SHALL BE MAINTAINED AT ALL TIMES TO THE APPROVAL OF THE CITY INSPECTOR, DEPARTMENT OF ECOLOGY, THE ENGINEER, AND/OR PORT REPRESENTATIVE.
4.

SHOULD TEMPORARY EROSION AND SEDIMENT CONTROL MEASURE, AS SHOWN ON THE PLANS BECOME INADEQUATE, THE CONTRACTOR SHALL INSTALL BMP'S AND/OR FACILITIES AS NECESSARY TO PROTECT ADJACENT PROPERTIES, CITY OF TACOMA DRAINAGE SYSTEM, AND EXISTING PORT DRAINAGE SYSTEMS MEETING THE APPROVAL OF THE INSPECTOR, ENGINEER, AND/OR PORT REPRESENTATIVE.
5.

CONTRACTOR SHALL CALL THE CITY INSPECTOR FOR INSPECTIONS UPON COMPLETION OF:  
A. STAKING OF CLEARING LIMITS.  
B. INSTALLATION OF EROSION CONTROL AND PRIOR TO SITE GRADING.  
C. PRIOR TO REMOVAL OF EROSION CONTROL DEVICES.
6.

ALL NON-SALVAGED MATERIAL REMOVED FROM THE SITE SHALL BE PLACED OR DISPOSED OF AT A PERMITTED SITE. CONTRACTOR SHALL OBTAIN CHARACTERIZATION DOCUMENTATION FROM THE PORT FOR ALL MATERIAL PRIOR TO HAUL AND DISPOSAL.
7.

THE IMPLEMENTATION OF THESE PLANS AND THE CONSTRUCTION, REGULAR REVIEW, MAINTENANCE, REPLACEMENT, AND CONSTRUCTION SURFACE WATER POLLUTION PREVENTION PLAN (CSWPPP), AND UPGRADING THESE FACILITIES IS THE RESPONSIBILITY OF THE CONTRACTOR IN ACCORDANCE WITH PROJECT SPECIFICATIONS AND PLANS UNTIL ALL CONSTRUCTION IS APPROVED AND ACCEPTED BY THE PORT AND CITY OF TACOMA.
8.

THE BOUNDARIES OF THE CLEARING LIMITS ARE THE FENCE LINE AS INDICATED IN THE PLANS. ADDITIONAL SILT FENCING AND HIGH VISIBILITY FENCING MAY BE CONSTRUCTED AT THE PROPERTY LINE ALONG TAYLOR WAY AND ALEXANDER AVE WHICH IS OUTSIDE OF THE FENCE LINE AND SHALL NOT BE CONSIDERED PART OF THE CLEARING LIMITS.
9.

CLEARING LIMITS SHALL BE CLEARLY STAKED AND/OR FLAGGED. NO-DISTURBANCE AREA LIMITS SHALL BE MAINTAINED BY THE TESC SUPERVISOR AND/OR CESCL FOR THE DURATION OF THE CONSTRUCTION UNLESS OTHERWISE NOTED OR AS DIRECTED BY THE ENGINEER. THE CLEARING LIMITS SHALL COINCIDE WITH GRADING LIMITS AT THE TOE OR TOP OF SLOPE UNLESS OTHERWISE INDICATED IN THE PLANS.
10.

THE TESC FACILITIES SHOWN ON THIS PLAN SHALL BE CONSTRUCTED PRIOR TO ALL CLEARING AND GRADING SO AS TO ENSURE THAT ANY TRANSPORT OF RUNOFF AND SEDIMENT TO SURFACE WATERS, DRAINAGE SYSTEMS, AND ADJACENT PROPERTIES DOES NOT OCCUR. THE TYPICAL WET SEASON RUNS FROM OCTOBER 1 THROUGH APRIL 30, AND THE DRY SEASON FROM MAY 1 THROUGH SEPTEMBER 30.
11.

THE TESC FACILITIES SHOWN ON THE PLANS ARE MINIMUM REQUIREMENTS FOR ANTICIPATED SITE CONDITIONS. TESC MEASURES SHALL BE UPGRADED, MODIFIED, RELOCATED, AND/OR EXPANDED AS NECESSARY TO ADDRESS ACTUAL CONSTRUCTION CONDITIONS.
12.

THE TESC FACILITIES SHALL BE INSPECTED DAILY BY THE TESC SUPERVISOR AND MAINTAINED TO ENSURE CONTINUED PROPER FUNCTIONING IN ACCORDANCE WITH THE SPECIFICATIONS. WRITTEN RECORDS SHALL BE KEPT OF TESC REVIEWS DAILY DURING THE WET SEASON AND WEEKLY DURING THE DRY SEASON.
13.

AS A GENERAL RULE, ANY AREAS OF EXPOSED SOILS, INCLUDING EMBANKMENTS, THAT WILL NOT BE DISTURBED FOR TWO DAYS DURING THE WET SEASON OR SEVEN DAYS DURING THE DRY SEASON SHALL BE IMMEDIATELY STABILIZED WITH THE APPROVED TESC BMP METHODS.
14.

THE TESC FACILITIES OF INACTIVE SITES SHALL BE INSPECTED AND MAINTAINED A MINIMUM OF ONCE PER MONTH AND/OR IMMEDIATELY FOLLOWING A STORM EVENT.
15.

AT NO TIME SHALL MORE THAN 6 INCHES OF SEDIMENT BE ALLOWED TO ACCUMULATE WITHIN A CATCH BASIN INSERT. ALL CATCH BASINS AND CONVEYANCE LINES SHALL BE CLEANED, TESTED, AND ADJUSTED PRIOR TO FINAL INSPECTION AND APPROVAL. THE CLEANING OPERATION SHALL NOT FLUSH SEDIMENT LADEN WATER INTO THE DOWNSTREAM SYSTEM.
16.

STABILIZED CONSTRUCTION ENTRANCES AND ROADS SHALL BE INSTALLED AT ALL ENTRANCES USED BY CONSTRUCTION EQUIPMENT AT THE BEGINNING OF CONSTRUCTION AND MAINTAINED FOR THE DURATION OF THE PROJECT. IF MORE THAN ONE ACCESS LOCATION IS USED, ADDITIONAL STABILIZED CONSTRUCTION ENTRANCES SHALL BE PROVIDED. ADDITIONAL MEASURES, SUCH AS WHEEL WASHES SHALL BE PROVIDED BY CONTRACTOR TO ENSURE THAT ALL PAVED AREAS ARE KEPT CLEAN FOR THE DURATION OF THE PROJECT.
17.

PLASTIC COVERING SHALL BE APPLIED IN ACCORDANCE WITH TESC PLANS, SPECIFICATIONS, AND AS DIRECTED (WITH APPROPRIATE ANCHORING SUCH AS ROPE AND SAND BAGS) BY THE ENGINEER ON DISTURBED AREAS THAT REQUIRE COVER MEASURES LESS THAN 30 DAYS OR AS A COVER FOR SEED (OPAQUE PLASTIC ONLY) DURING THE COLD WINTER MONTHS FOR CREATING A GREENHOUSE EFFECT TO ENCOURAGE GRASS GROWTH. PLASTIC COVERINGS SHALL NOT BE USED UPSLOPE OF AREAS ADVERSELY IMPACTED BY ITS CONCENTRATED RUNOFF, UNLESS DIVERSION OR RETENTION AND DISSIPATION MEASURES ARE IN PLACE AND FUNCTIONING.

EROSION CONTROL GENERAL NOTES (CONTINUED):

18.

INLET PROTECTION SHALL BE USED ON ALL EXISTING AND CONSTRUCTED DRAINS WITHIN 30 FEET OF A DISTURBED AREA. THEY SHALL BE CHECKED AND CLEANED WEEKLY AND AFTER EACH STORM EVENT.
19.

PREVENTATIVE MEASURES TO MINIMIZE THE WIND TRANSPORT OF SOIL SHALL BE TAKEN WHEN A PORT OR TRAFFIC HAZARD MAY BE CREATED OR WHEN SEDIMENT TRANSPORTED BY THE WIND IS LIKELY TO BE DEPOSITED IN DRAINAGE WAYS, WATER RESOURCES, OR NON-PORT PROPERTY. WHEN USING WATER FOR DUST CONTROL, SPRAY UNTIL THE SOIL IS WET BUT RUNOFF IS NOT INITIATED.
20.

PAVED STREETS AND OTHER PAVED AREAS SHALL BE SWEEP DAILY TO PREVENT SEDIMENT AND DUST TRACKING ONTO THE PAVED AREAS.
21.

THE CONTRACTOR MAY USE THE PROVIDED SWPPP, OR DEVELOP ITS' OWN AND SUBMIT FOR APPROVAL. CONTRACTOR SHALL UPDATE BASED ON SPECIFIC CONSTRUCTION ACTIVITIES. THE CONTRACTOR SHALL DEVELOP A SPILL PREVENTION AND COUNTER MEASURES CONTROL PLAN AND IDENTIFY PERSONS RESPONSIBLE FOR IMPLEMENTING THE PLAN IF A SPILL OF A DANGEROUS OR HAZARDOUS WASTE SHOULD OCCUR. ANY SPILL THAT OCCURS, REGARDLESS OF SIZE AND/OR TYPE OF SPILL, SHALL BE BROUGHT TO THE IMMEDIATE ATTENTION OF THE PORT. IN THE CASE OF A SMALL ISOLATED SPILL THAT IS CONTAINED, COVER WITH AN ABSORBENT MATERIAL AND CONTACT THE ENGINEER IMMEDIATELY. THE PLAN SHALL BE SUBMITTED FOR APPROVAL PRIOR TO BEGINNING CONSTRUCTION.
22.

THE CONTRACTOR SHALL BE RESPONSIBLE FOR FULL COMPLIANCE WITH THE WASHINGTON STATE LAWS, INCLUDING THOSE FOR DROPPING LOADS OR OTHER MATERIALS COVERING LAWS (RCW 46.51.655.3/4).
23.

STORMWATER RUNOFF FROM DISTURBED AREAS OF THE SITE SHALL BE DISCHARGED TO EXISTING SANITARY SEWER IN ACCORDANCE WITH NECESSARY SPECIAL AUTHORIZATION TO DISCHARGE PERMIT ISSUED BY THE CITY OF TACOMA AND ACQUIRED BY THE PORT. NO OTHER OFFSITE DISCHARGE OF STORMWATER RUNOFF SHALL OCCUR. CONTRACTOR SHALL CONSTRUCT AND STABILIZE TEMPORARY SWALES, DITCHES, SUMPS/SEDIMENT TRAPS/PONDS AND STORMWATER TREATMENT AS A FIRST ORDER OF WORK. ALL SURFACE FLOWS FROM DISTURBED AREAS SHALL BE CONVEYED THROUGH THESE TRAPPING DEVICES AND TREATMENT SYSTEMS BEFORE BEING COLLECTED IN HOLDING TANKS FOR DISCHARGE TO EXISTNG SANITARY SEWER. PRIOR TO RELEASE FROM HOLDING TANKS TO SANITARY SEWER, CONTRACTOR SHALL TEST STORMWATER FOR COMPLIANCE WITH CONDITIONS OF DISCHARGE PERMIT. RECORDS OF TESTING PRIOR TO DISCHARGE SHALL BE MAINTAINED ONSITE THROUGHOUT THE DURATION OF THE PROJECT AND MADE AVAILABLE FOR REVIEW BY THE ENGINEER UPON REQUEST. SEE RECOMMENDED TESC CONSTRUCTION SEQUENCE BELOW.
24.

POTENTIAL LOCATIONS FOR INTERCEPTOR DITCHES, SEDIMENT TRAPS, STORMWATER TREATMENT AND HOLDING TANKS ARE INDICATED ON THE PLANS, CONTRACTOR SHALL INDICATE LOCATIONS AND CONFIGURATION OF COLLECTION. TREATMENT AND HOLDING SYSTEMS AS PART OF THE CONSTRUCTION STORMWATER POLLUTION PREVENTION PLAN. CONTRACTOR SHALL CHANGE, SUPPLEMENT OR RELOCATE THESE ELEMENTS AS NEEDED BASED ON CONTRACTOR MEANS AND METHODS, WORK SEQUENCING AND CHANGING SITE CONDITIONS, AND AS REQUIRED TO COMPLY WITH THE CONDITIONS OF THE SPECIAL AUTHORIZATION TO DISCHARGE PERMIT.
25.

IN ADDITION TO EROSION CONTROL MATERIALS INSTALLED, CONTRACTOR SHALL MAINTAIN AN ONSITE STOCKPILE OF MATERIALS CONSISTING OF (PER ACRE OF PROJECT AREA) 20 LF OF SILT FENCE, 5 SAND BAGS, 10 SY OF CLEAR PLASTIC COVER, 0.5 CY OF QUARRY SPALLS, AND 0.5 CY OF PEA GRAVEL FOR ROCK CHECK DAMS AND OTHER MATERIAL AS DIRECTED BY THE ENGINEER.

RECOMMENDED TESC CONSTRUCTION SEQUENCE:

1.

INSTALL TRAFFIC CONTROL SIGNING.
2.

FLAG AND FENCE CLEARING LIMITS AND INSTALL PERIMETER PROTECTION FOR INSPECTION.
3.

POST CONSTRUCTION SIGN WITH NAME AND PHONE NUMBER OF THE TESC CONTRACTOR.
4.

INSTALL INLET PROTECTION AND SILT FENCE WHERE REQUIRED.
5.

INSTALL TEMPORARY CURBS OR PERIMETER DIKES WHERE REQUIRED.
6.

GRADE AND STABILIZE CONSTRUCTION ENTRANCES AND CONSTRUCTION ROADS.
7.

INSTALL WHEEL WASH AT CONSTRUCTION ENTRANCES.
8.

COLLECT RUNOFF WITH INTERCEPTOR DITCHES AND SEDIMENT TRAPS/SUMPS.
9.

INSTALL SEDIMENT CONTROLS INCLUDING SAND ENHANCED FILTRATION AND NECESSARY HOLDING TANKS.
10.

STABILIZE SOILS AND SLOPES, PROTECT SLOPES, PROTECT DRAIN INLETS, STABILIZE CHANNELS AND OUTLETS, CONTROL POLLUTANTS, CONTROL DEWATERING, MAINTAIN BMP'S, AND MANAGE THE PROJECT.
11.

ADD, REROUTE, AND RELOCATE EROSION CONTROL MEASURES THROUGHOUT THE DURATION OF THE PROJECT AS REQUIRED TO PROTECT ADJACENT PROPERTIES, CITY OF TACOMA DRAINAGE SYSTEM, CITY OF TACOMA SANITARY SEWER SYSTEM, AND PORT OF TACOMA DRAINAGE SYSTEMS MEETING THE APPROVAL OF THE ENGINEER.
12.

UPON COMPLETION OF THE PROJECT, ALL DISTURBED AREAS SHALL BE STABILIZED AND BMP'S AND TEMPORARY TRAFFIC CONTROL AND SIGNING SHALL BE REMOVED AS DIRECTED BY THE ENGINEER, CITY, AND THE PORT.

DEMOLITION NOTES

1.

CONTRACTOR SHALL CALL FOR UTILITY LOCATES AND LOCATE EXISTING UTILITIES IN THE ROADWAY AND ON-SITE PRIOR TO BEGINNING ANY DEMOLITION OR EXCAVATION.
2.

CONTRACTOR SHALL COORDINATE POWER AND WATER SERVICE RELOCATION WITH TPU.
3.

ALL MONITORING WELLS FOUND SHALL BE FLAGGED AND PROTECTED. MONITORING WELLS SHOWN REFLECT ALL AVAILABLE RECORDS.

REGULATED MATERIALS:

1.

SUSPECT SOIL WITH AN ODOR, SHEEN, OR COLOR INDICATING PRESENCE OF REGULATED MATERIALS SHALL BE STOCKPILED ON-SITE IN A DESIGNATED CONTAINED AREA AND WILL BE CLASSIFIED ACCORDING TO MODEL TOXICS CONTROL ACT (MODCA) (CHAPTER 70.105D RCW) CLEANUP LEVELS AS REGULATED OR NON-REGULATED. IT SHALL BE THE CONTRACTORS RESPONSIBILITY TO FOLLOW AND COMPLY WITH THE MATERIALS MANAGEMENT PLAN (MMP).
2.


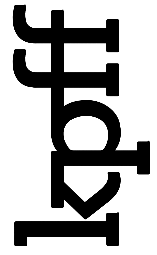

AFTER CHARACTERIZATION, THE NON-REGULATED SOIL SHALL BE REUSED ONSITE FOR FILL MATERIAL PROVIDED IT MEETS GRADING REQUIREMENTS ASSOCIATED WITH ITS USE OR EXPORTED.
3.

SOILS FOUND TO CONTAIN REGULATED MATERIALS ABOVE MODCA LEVEL A THRESHOLDS SHALL BE HANDLED AND DISPOSED OF, BY THE CONTRACTOR, IN ACCORDANCE WITH THE WASTE MANAGEMENT PLAN.
4.

WATER LEACHING OUT OF TRENCHES OR STOCKPILED SOILS AND HAS A SHEEN, COLOR, OR ODOR INDICATING THE PRESENCE OF SUSPECT MATERIALS SHALL BE TREATED WITH A GRANULATED ACTIVATED CARBON FILTER SYSTEM. SUCH WATER MUST BE DIVERTED TO AND COLLECTED IN BAKER TANKS FOR TESTING PRIOR TO RELEASE TO SANITARY SEWER UNDER SPECIAL AUTHORIZATION TO DISCHARGE PERMIT.
5.

ALL OPEN EXCAVATIONS SHALL BE BACKFILLED THE SAME WORK DAY.
6.

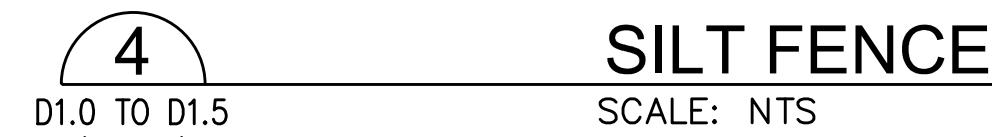
THE CONTRACTOR SHALL HAVE SPILL KITS ON SITE AND ABSORBENT PADS FOR OILS.

D1.7 26 OF 163	PARCEL 77 AUTO IMPORT TERMINAL				APPROVED:				CMB 3/13/2018																
	DEMOLITION AND TESC NOTES				DIRECTOR		ENG. DATE		CHECKED BY		DATE		MARK:		REVISION:		BY:		APPR:		DATE:				
					PRINTED BY: chennett		May 10, 2018		SWK		3/16/2018														
					TOWNSHIP: 21N		RANGE: 3E		SECTION: 36																
CONT/CONS: 070770		M. ID: 201020.01		TOWNSHIP: 21N		RANGE: 3E		SECTION: 36		DIRECTOR		ENG. DATE		CHECKED BY		DATE		CMB		3/13/2018					
PHASE:		BID SET		DAT-HRZ: W83-SF		VERT: PORT OF TACOMA BM#		PRINTED BY: chennett		May 10, 2018		SWK		3/16/2018		MARK:		REVISION:		BY:		APPR:		DATE:	
				PARCEL: MULTIPLE		DRAWING SCALE: AS SHOWN		PORT ADDRESS: ONE SITCUM PLAZA		TACOMA WA 98401-1837															

THIS DRAWING IS THE PROPERTY OF THE PORT OF TACOMA AND SHALL NOT BE USED ON OTHER WORK, DISCLOSED, COPIED, IN WHOLE OR IN PART, WITHOUT WRITTEN PERMISSION



1. INSERT SHALL BE INSTALLED IN ALL OPERATIONAL CATCH BASINS WITHIN 500 FEET OF WORK LIMITS PRIOR TO CLEARING AND GRADING ACTIVITY, OR UPON PLACEMENT OF A NEW CATCH BASIN.
2. FILTERS SHALL BE INSPECTED AFTER EACH STORM EVENT AND CLEANED OR REPLACED WHEN IT IS 1/3 FULL.
3. SEDIMENT REMOVAL SHALL BE ACCOMPLISHED BY REMOVING THE INSERT, EMPTYING INTO APPROPRIATE DISPOSAL LOCATION, AND REINSERTING IT INTO THE CATCH BASIN.



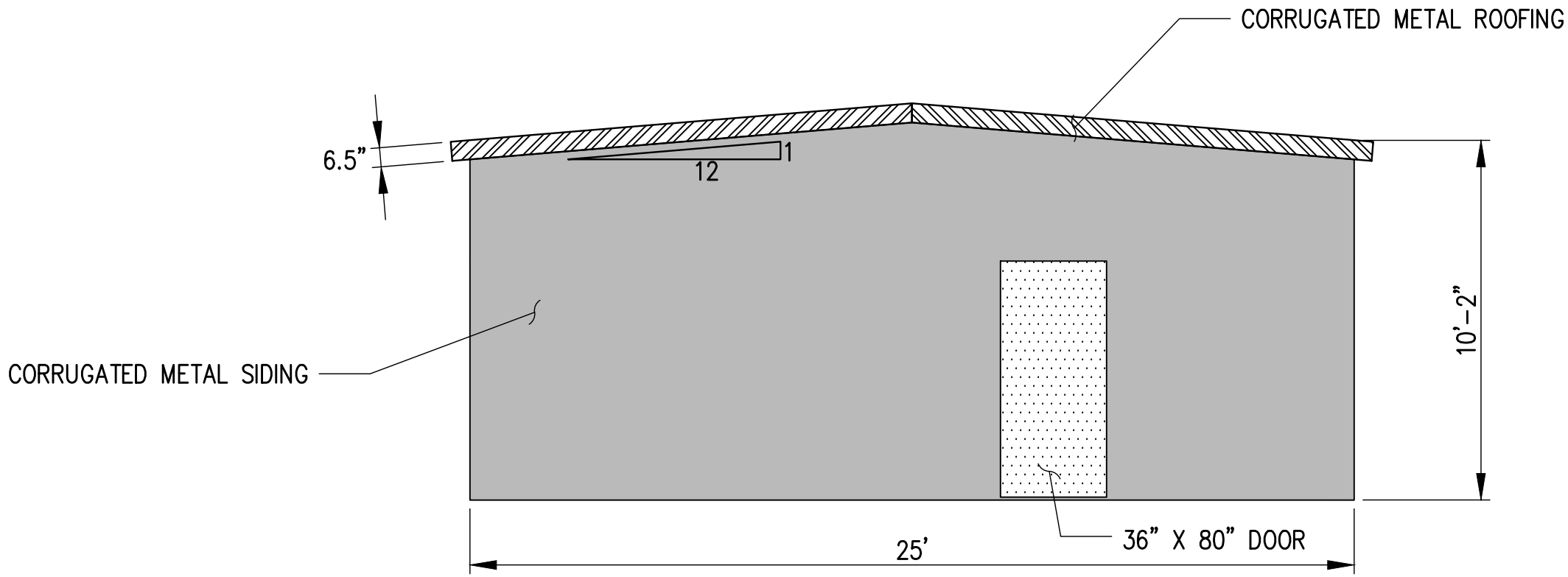
1. REPAIR ANY DAMAGE IMMEDIATELY.
2. IF CONCENTRATED FLOWS ARE EVIDENT UPHILL OF THE FENCE, INTERCEPT AND CONVEY THEM TO A SEDIMENT POND.
3. IT IS IMPORTANT TO CHECK THE UPHILL SIDE OF THE FENCE FOR SIGNS OF THE FENCE CLOGGING, ACTING AS A BARRIER TO FLOW, AND THEN CAUSING CHANNELIZATION OF FLOWS PARALLEL TO THE FENCE. IF THIS OCCURS, REPLACE THE FENCE OR REMOVE THE TRAPPED SEDIMENT.
4. REMOVE SEDIMENT DEPOSITS WHEN THE DEPOSIT REACHES APPROXIMATELY ONE-THIRD THE HEIGHT OF THE SILT FENCE, OR INSTALL A SECOND SILT FENCE.
5. IF THE FILTER FABRIC (GEOTEXTILE) HAS DETERIORATED DUE TO ULTRAVIOLET BREAKDOWN, REPLACE IT.

1. QUARRY SPALLS SHALL BE ADDED IF THE PAD IS NO LONGER IN ACCORDANCE WITH THE SPECIFICATIONS.
2. IF THE ENTRANCE IS NOT PREVENTING SEDIMENT FROM BEING TRACKED ONTO PAVEMENT, THEN ALTERNATIVE MEASURES TO KEEP THE STREETS FREE OF SEDIMENT SHALL BE USED. THIS MAY INCLUDE STREET SWEEPING, AN INCREASE IN THE DIMENSIONS OF THE ENTRANCE, OR THE INSTALLATION OF A WHEEL WASH. IF WASHING IS USED, IT SHALL BE DONE ON AN AREA COVERED WITH CRUSHED ROCK, AND WASH WATER SHALL DRAIN TO A SEDIMENT TRAP OR POND.
3. ANY SEDIMENT THAT IS TRACKED ONTO PAVEMENT SHALL BE REMOVED IMMEDIATELY BY SWEEPING. THE SEDIMENT COLLECTED BY SWEEPING SHALL BE REMOVED OR STABILIZED ON-SITE. THE PAVEMENT SHALL NOT BE CLEANED BY WASHING DOWN THE STREET, EXCEPT WHEN SWEEPING IS INEFFECTIVE AND THERE IS A THREAT TO PUBLIC SAFETY. IF IT IS NECESSARY TO WASH THE STREETS, THE CONSTRUCTION OF A SMALL SUMP SHALL BE CONSIDERED. THE SEDIMENT WOULD THEN BE WASHED INTO THE SUMP.
4. ANY QUARRY SPALLS THAT ARE LOOSENEED FROM THE PAD AND END UP ON THE ROADWAY SHALL BE REMOVED IMMEDIATELY.
5. IF VEHICLES ARE ENTERING OR EXITING THE SITE AT POINTS OTHER THAN THE CONSTRUCTION ENTRANCE(S), FENCING SHALL BE INSTALLED TO CONTROL TRAFFIC.

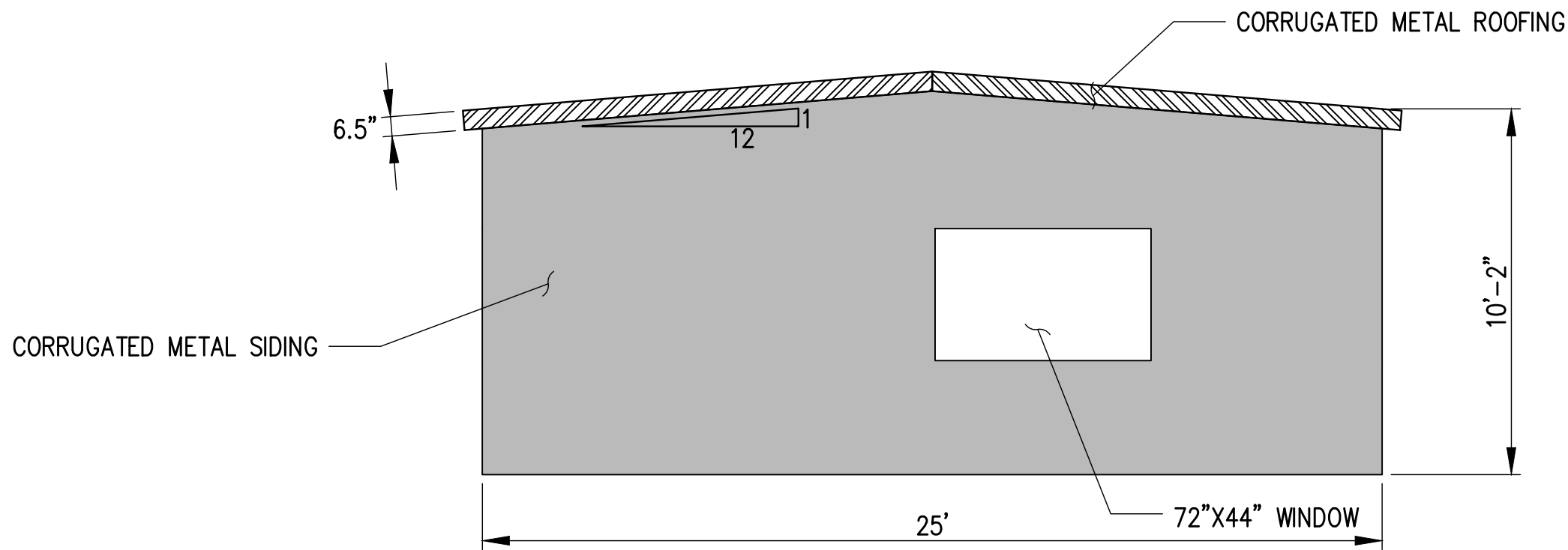


GENERAL NOTES:

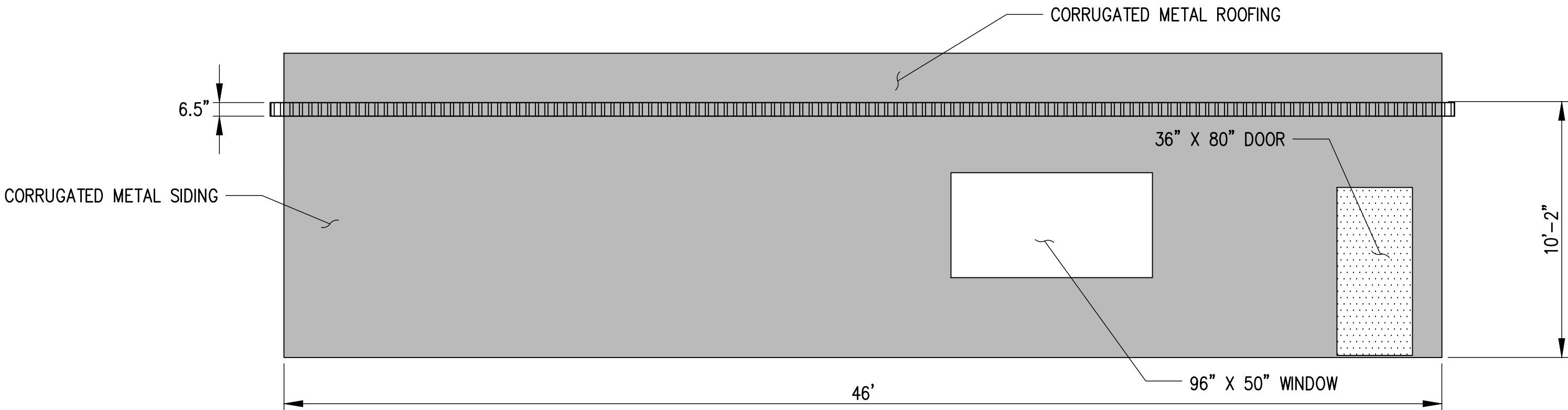
- 1. REFER TO SHEET D1.2 FOR PLAN VIEW.
- 2. CONTRACTOR SHALL DEMOLISH BUILDINGS AND ALL ASSOCIATED UTILITIES PER THE PLANS, SPECIFICATIONS, AND DISPOSE OF AT A PERMITTED SITE.



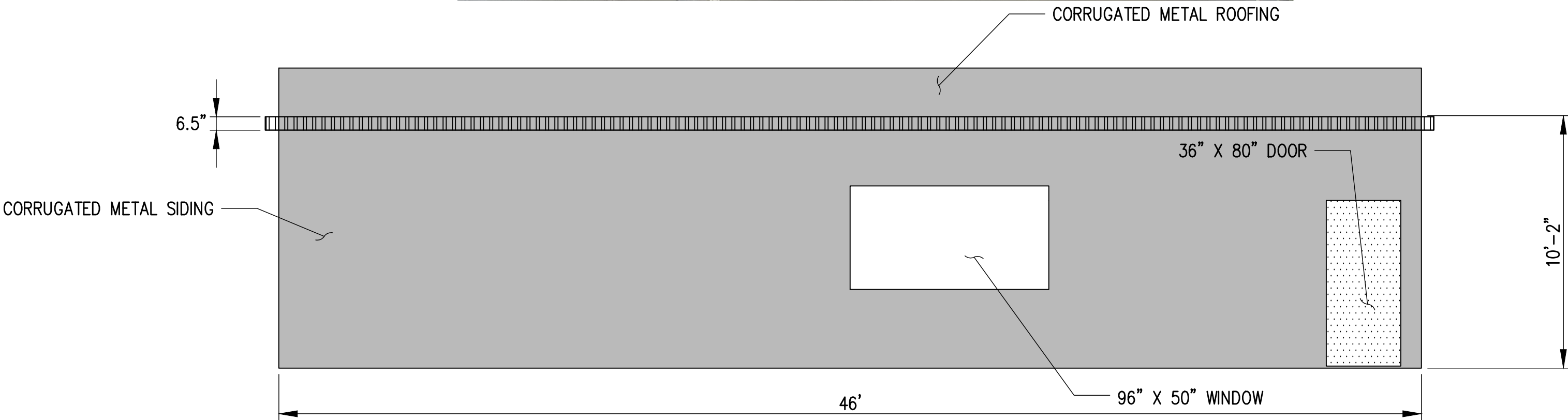
1 BUILDING 1 NORTH ELEVATION  
D1.2 SCALE: 1"=4' PHOTO: NTS



3 BUILDING 1 SOUTH ELEVATION  
D1.2 SCALE: 1"=4' PHOTO: NTS



2 BUILDING 1 EAST ELEVATION  
D1.2 SCALE: 1"=4' PHOTO: NTS

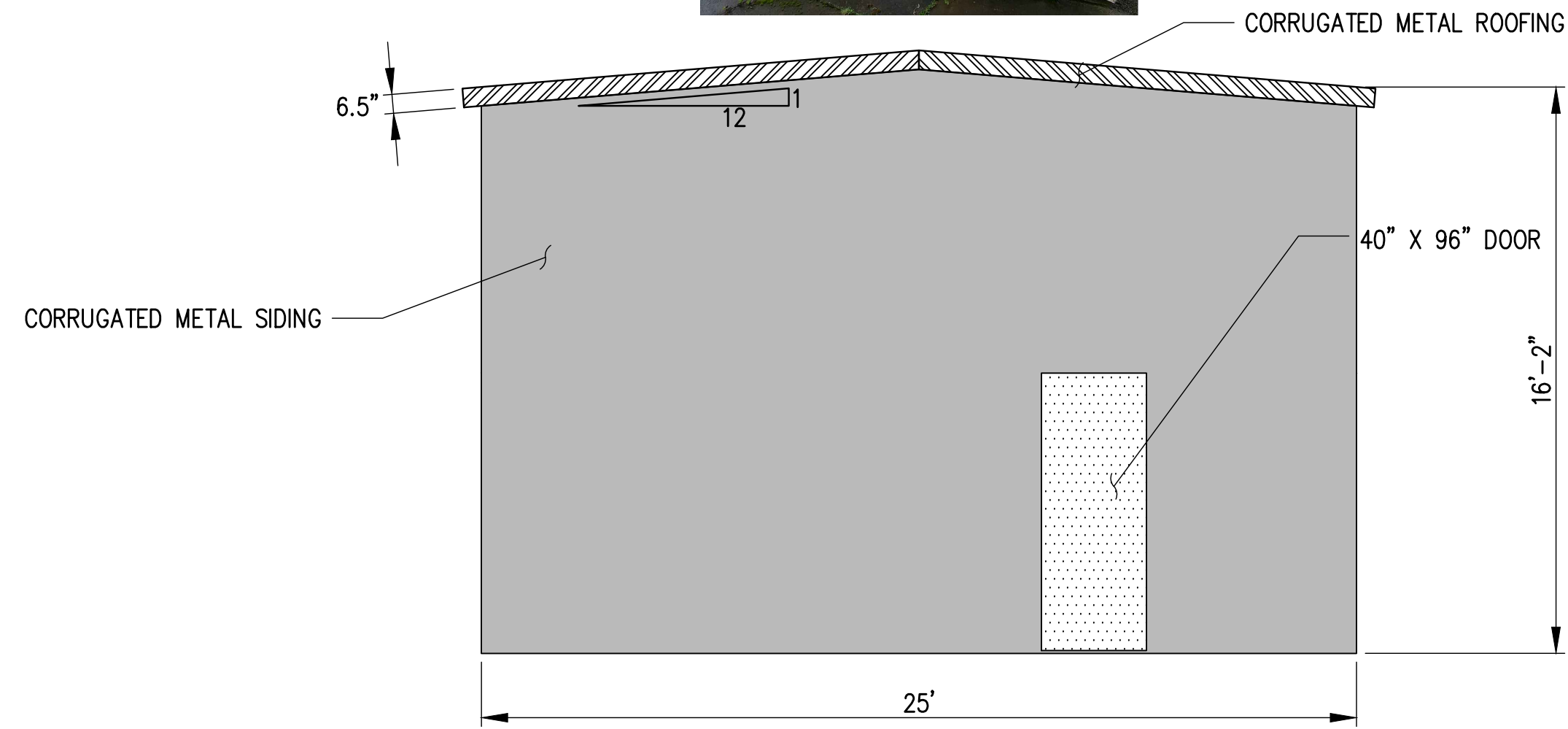


4 BUILDING 1 WEST ELEVATION  
D1.2 SCALE: 1"=4' PHOTO: NTS

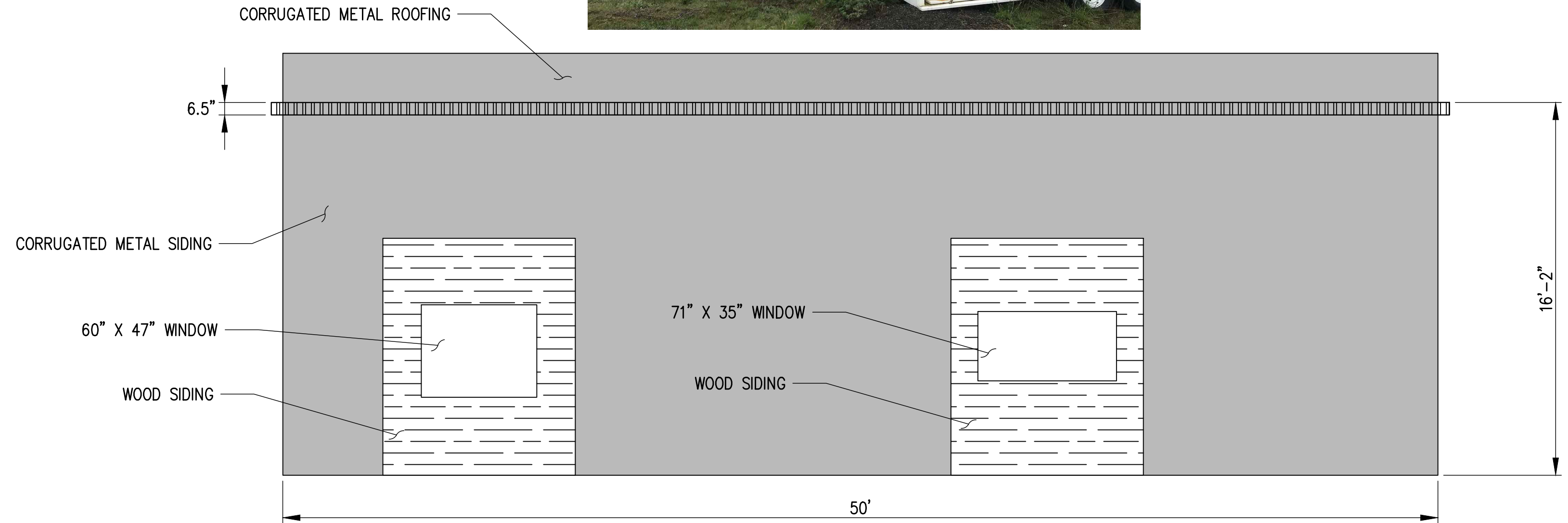
<b>D1.9</b> 28 OF 163	<b>PARCEL 77 AUTO IMPORT TERMINAL</b>				APPROVED:	OMB 3/13/2018		 2407 North 31st Street, Suite 100 Tacoma, Washington 98407 (253) 396-0150 Fax (253) 396-0162 P.O. BOX 1837 TACOMA, WA 98401 (253) 396-0441	
	<b>BUILDING DEMOLITION ELEVATIONS</b>				CHECKED BY: DATE	DATE			
					DIRECTOR ENG. DATE	DATE			
					PRINTED BY: chennett May 10, 2018	DATE			
CONT/CONS: 070770	TOWNSHIP: 21N	RANGE: 3E	SECTION: 36						
M. ID: 201020.01	DAT-HRZ: W83-SF	VERT: PORT OF TACOMA BM#							
PHASE: BID SET	PARCEL: MULTIPLE	DRAWING SCALE: AS SHOWN							
THIS DRAWING IS THE PROPERTY OF THE PORT OF TACOMA AND SHALL NOT BE USED ON OTHER WORK, DISCLOSED, COPIED, IN WHOLE OR IN PART, WITHOUT WRITTEN PERMISSION									



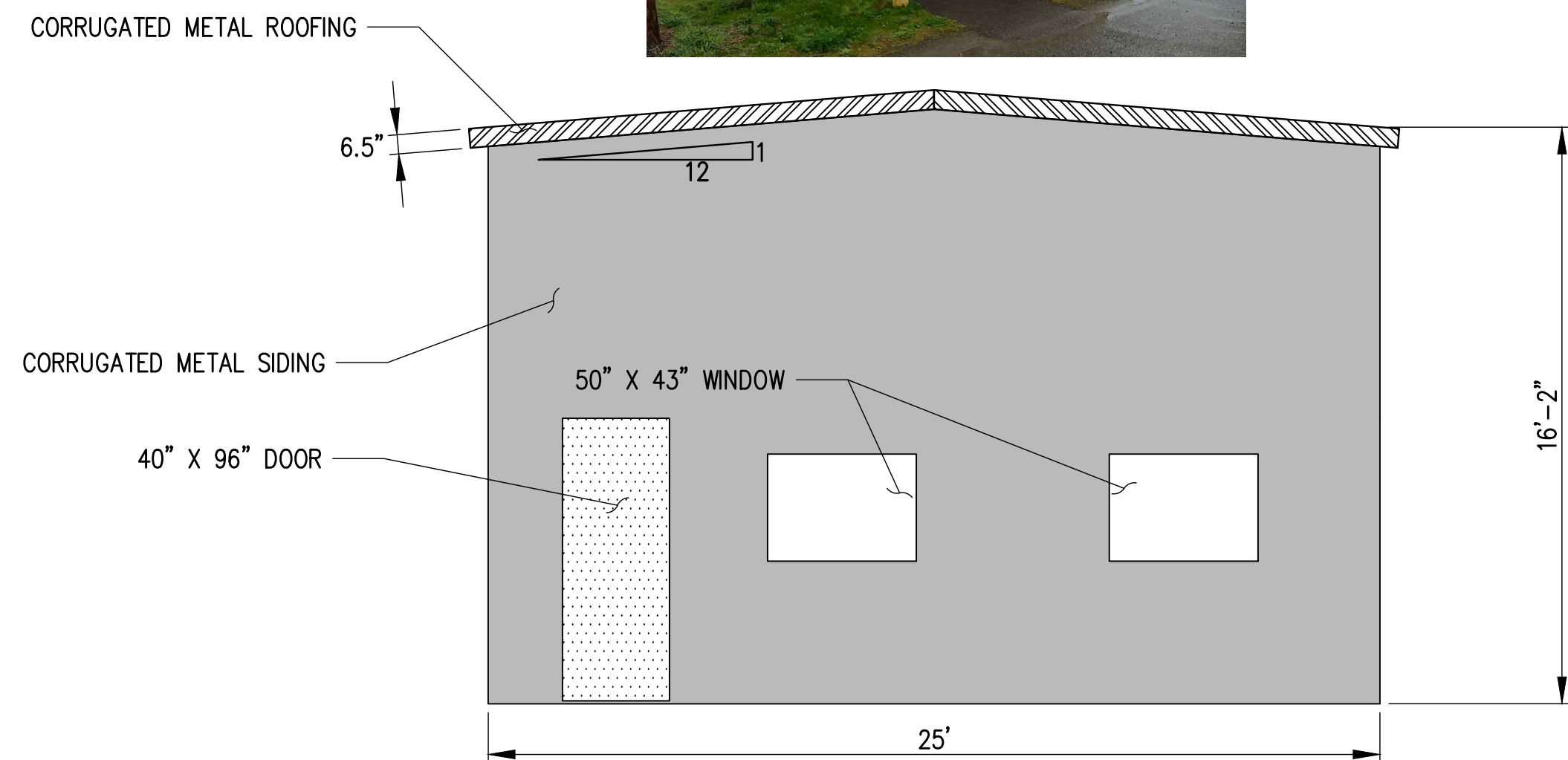
1. REFER TO SHEET D1.2 FOR PLAN VIEW.
2. CONTRACTOR SHALL DEMOLISH BUILDINGS AND ALL ASSOCIATED UTILITIES PER THE PLANS, SPECIFICATIONS, AND DISPOSE OF AT A PERMITTED SITE.



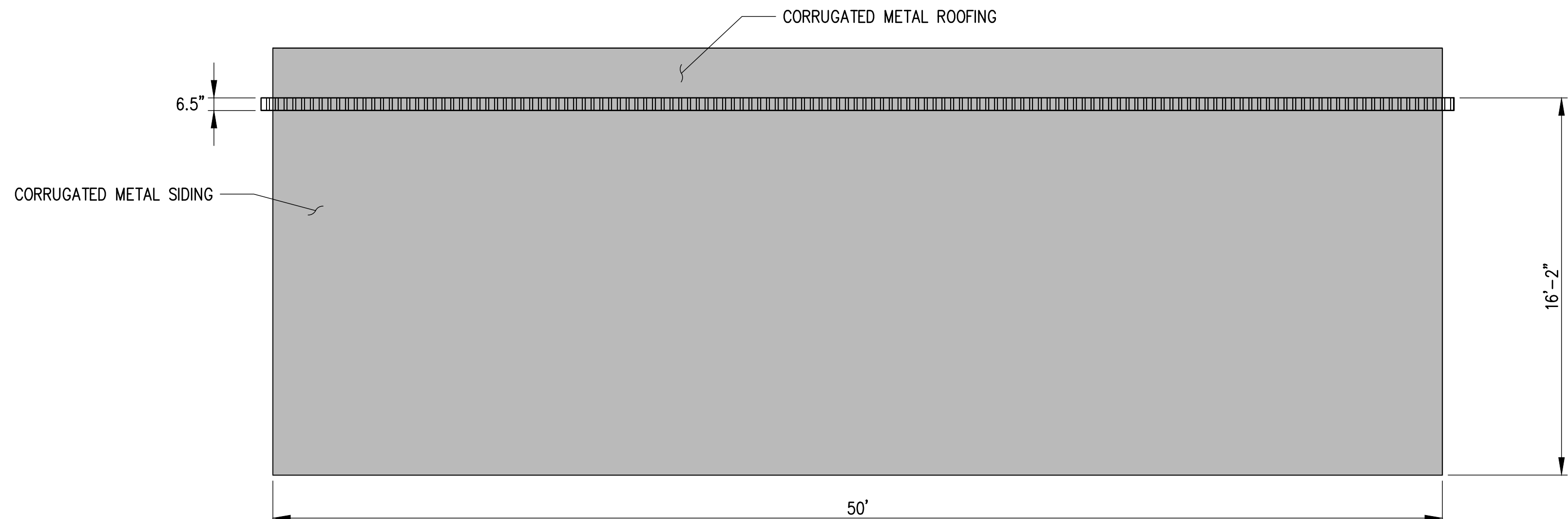
**1 BUILDING 2 NORTH ELEVATION**  
D1.2 SCALE: 1"=4' PHOTO: NTS



**BUILDING 2 EAST ELEVATION**  
SCALE: 1"=4' PHOTO: NTS



**3 BUILDING 2 SOUTH ELEVATION**  
D1.2 SCALE: 1"=4' PHOTO: NTS



# 4 BUILDING 2 WEST ELEVATION D1.2 SCALE: 1"=4' PHOTO: NTS