

EXISTING PHOTOGRAPHS

Existing photographs of the Maintenance building

EXISTING PHOTOGRAPHS



Figure 1 South Elevation



Figure 2 South Elevation, detail of eastern half with tower



Figure 3 Eastern elevation of control tower.

EXISTING PHOTOGRAPHS



Figure 4 East Elevation Strad Service Bays



Figure 5 South Elevation, base of Tower at break room



Figure 6 East Elevation, base of Tower at metal wall panel damage



Figure 7 East Elevation north end of building.

EXISTING PHOTOGRAPHS



Figure 8 East Elevation, view SW at Strad service bays



Figure 9 East Elevation, wall damage at northern end of building

EXISTING PHOTOGRAPHS



Figure 10 Northeast corner of building view SW



Figure 11 Recessed area at North Elevation view SE



Figure 12 Boot flashing at vent pipe



Figure 13 West Elevation North end of building at service bays.

EXISTING PHOTOGRAPHS



Figure 14 Damage to base of wall at north end of building



Figure 15 Damage to gutter over west wall



Figure 16 West Elevation, Service bays near center of elevation.



Figure 17 Power outlets between service bays.



Figure 18 West Elevation Southern end of building.



Figure 19 First floor windows, South Wall outside Break Room.



Figure 20 Interior window sill at Break Room

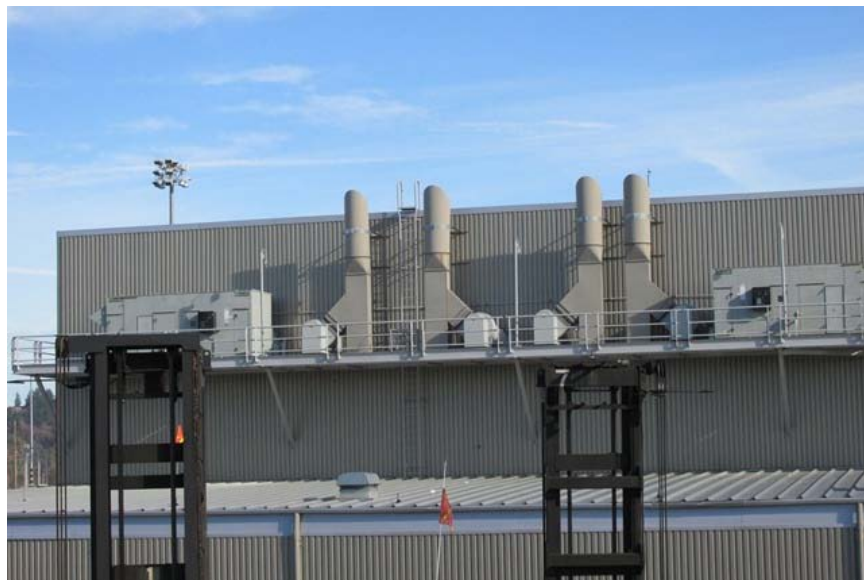


Figure 21 Mechanical Mezzanine West Elevation

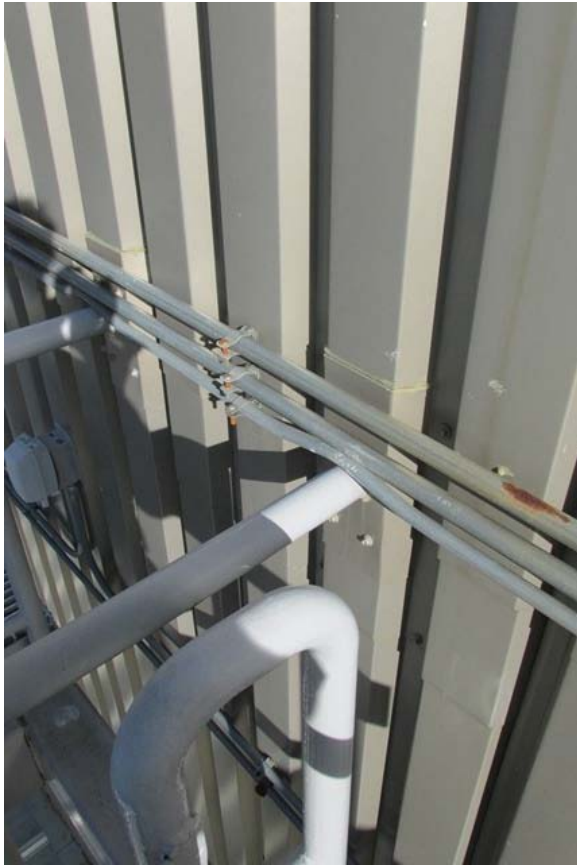


Figure 22 Wall penetrations thru west wall at Mech. Mezz.



Figure 23 Ladder & Opening in Mech. Mezzanine Floor



Figure 24 Southern end Mechanical Mezzanine, West Elevation

EXISTING PHOTOGRAPHS



Figure 25 Mech. Mezz. Floor grating and pipe condition.



Figure 26 Mech. Mezz. Duct penetration of West wall.



Figure 27 Roof over Strad Service Bays view south



Figure 28 Typical Fall Restraint Stanchion



Figure 29 View down on Mech. Mezz, view NW

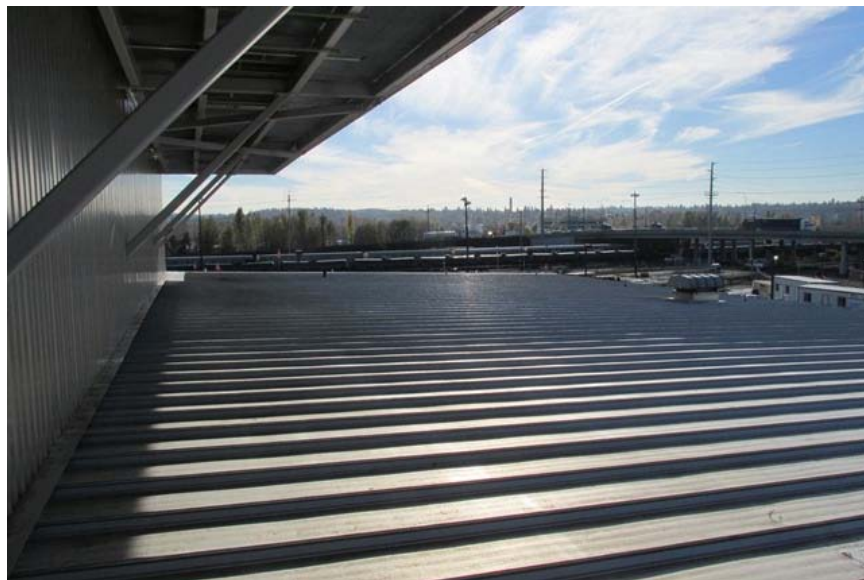


Figure 30 View South under Mechanical Mezzanine



Figure 31 Wall penetration at Mech. Mezz support brace.



Figure 32 Roof Transition between Service Bays view W

EXISTING PHOTOGRAPHS



Figure 33 Roof Penetration over Service Bays North end of building view east.



Figure 34 Ladder from Mech. Mezz. base of west well



Figure 35 Wall Penetration boot condition.

EXISTING PHOTOGRAPHS



Figure 36 Roof edge condition at north end of Strad Service bay over lower roof, view East.



Figure 37 Roof over service bay view west.

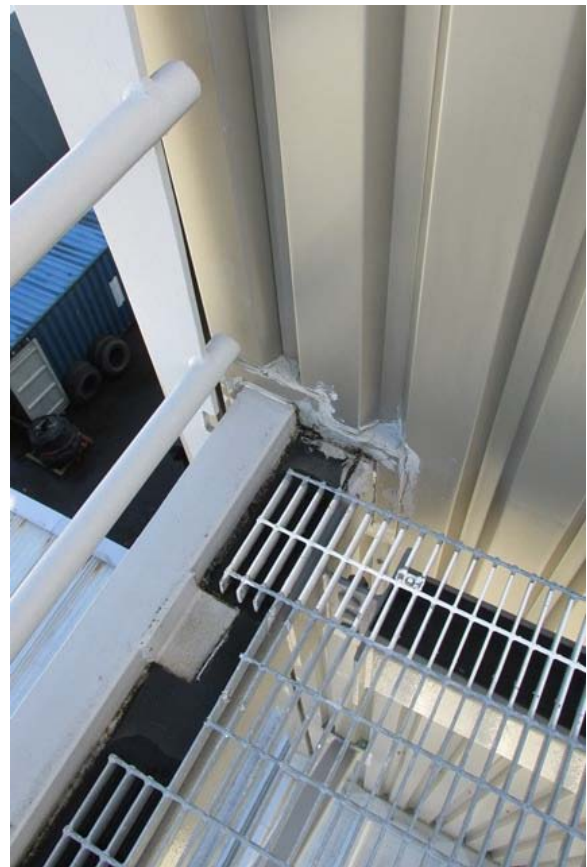


Figure 38 North end of Mech. Mezz at wall penetration.



Figure 39 Interior of Service bays view north.

EXISTING PHOTOGRAPHS



Figure 40 Storage room base of control tower second floor, view west.



Figure 41 Views of three story tall space inside second floor of control tower

EXISTING PHOTOGRAPHS



Figure 42 North Wall of interior of Strad Service Bay.

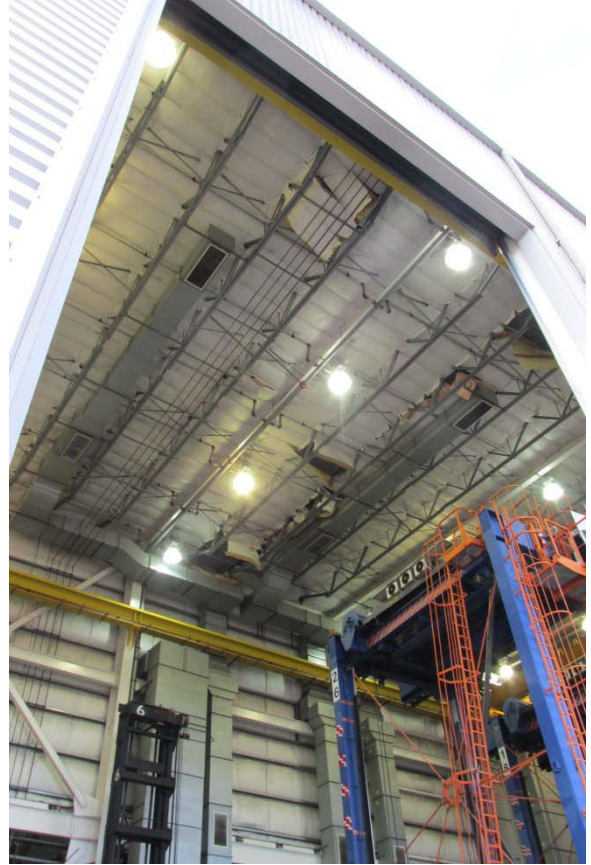


Figure 43 Ceiling of Strad Service Bay

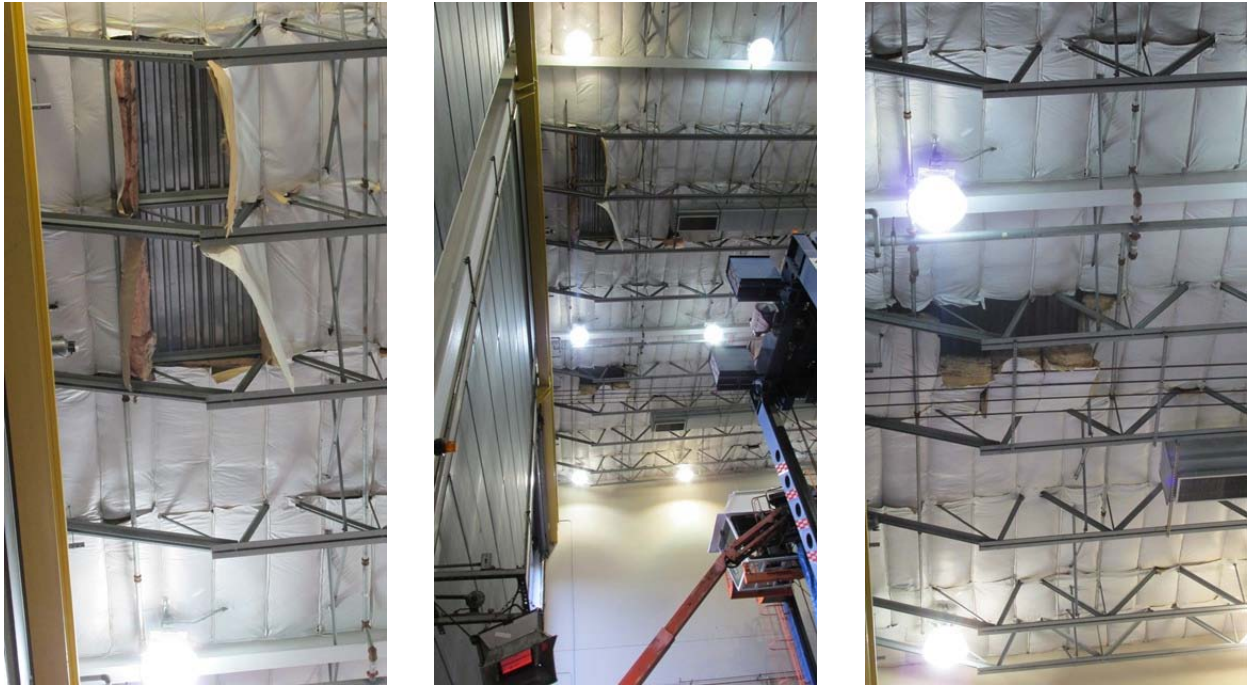


Figure 44 Views of Strad Service Bays Ceiling and Walls.