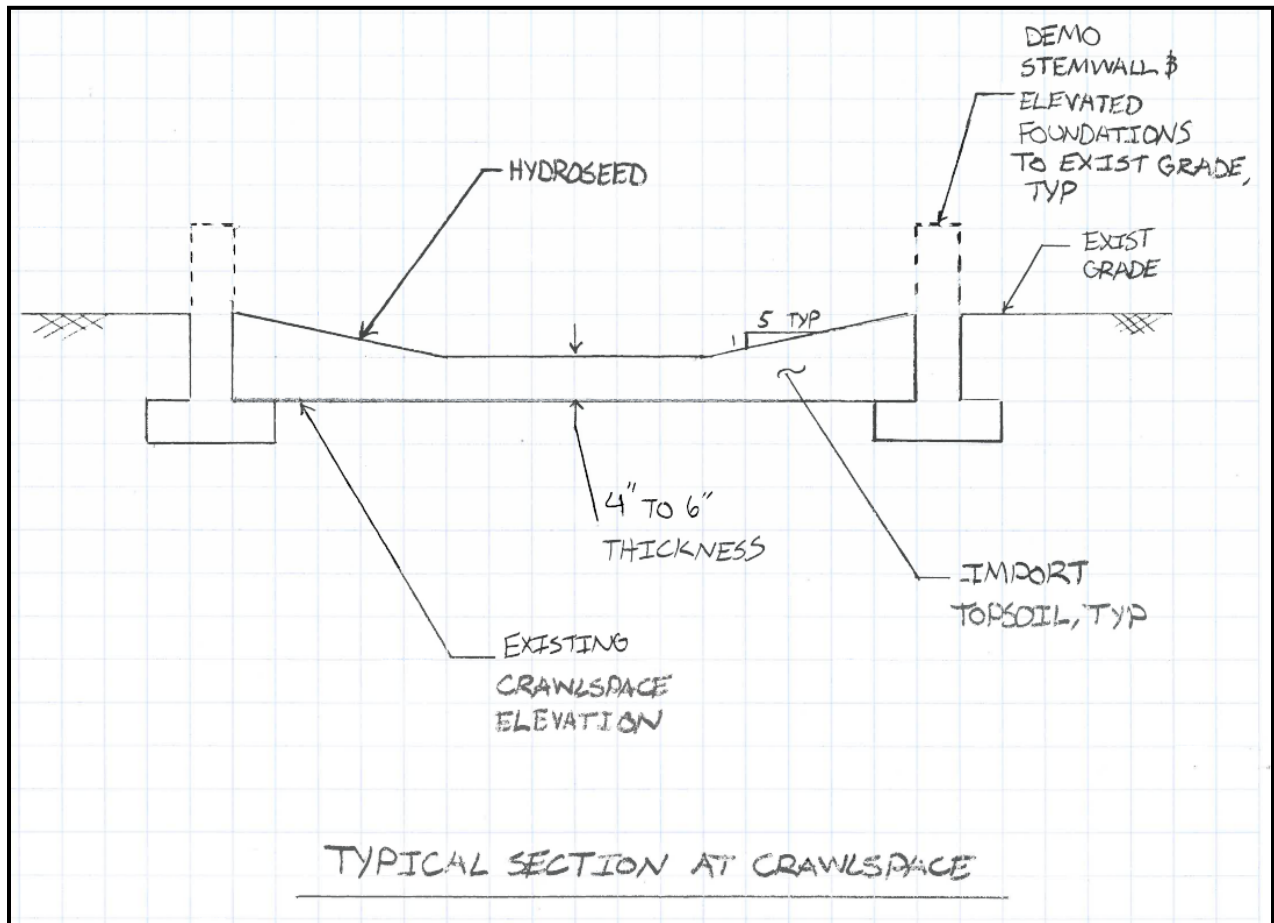


Figure 20 – 3502 Lincoln Avenue Typical Section at Crawlspace

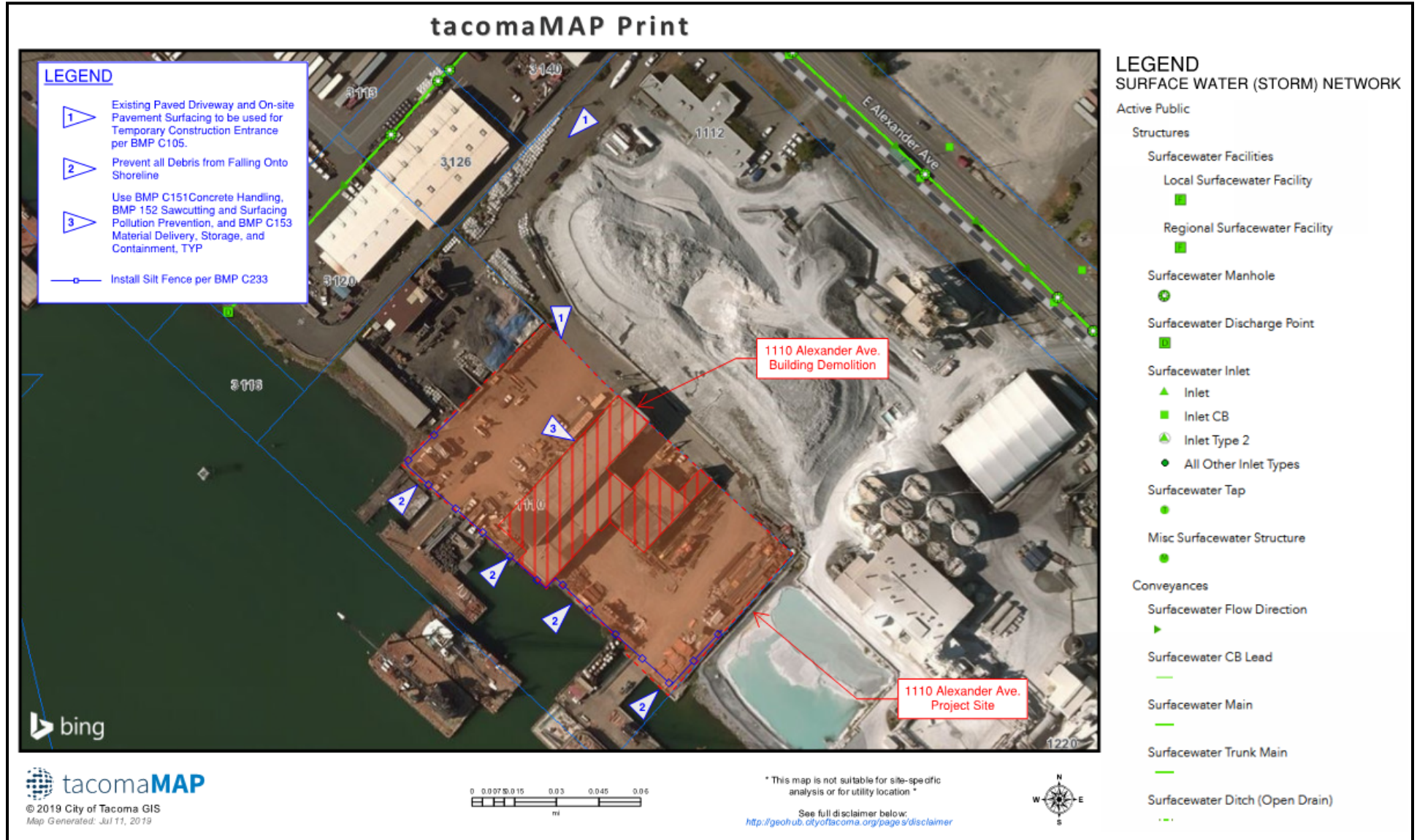


---

# Plan D

1110 Alexander Avenue

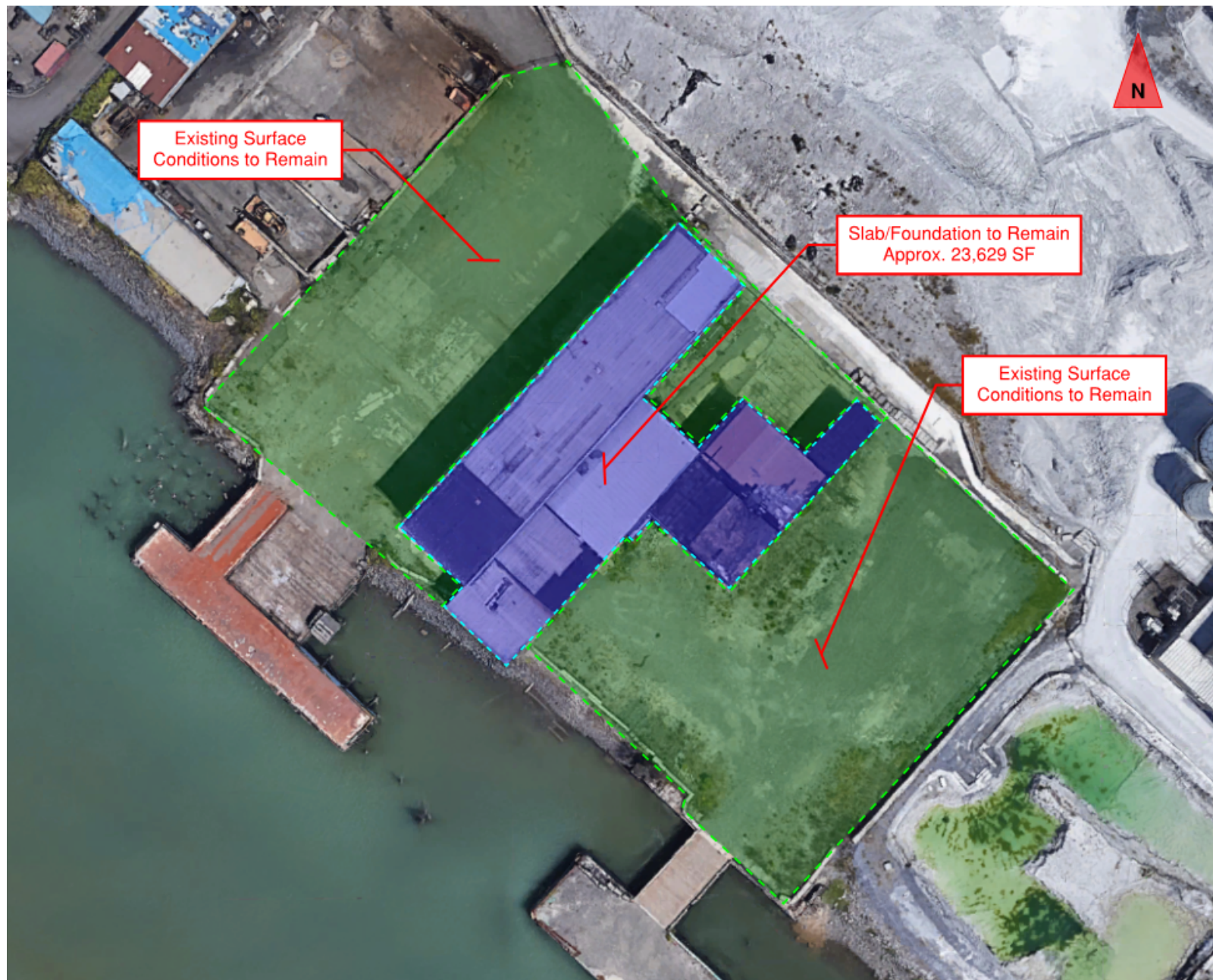
# 1110 Alexander Avenue.



**TESC PLAN**  
1110 Alexander Avenue  
Port Project Number: 10-6990-00-1701-06

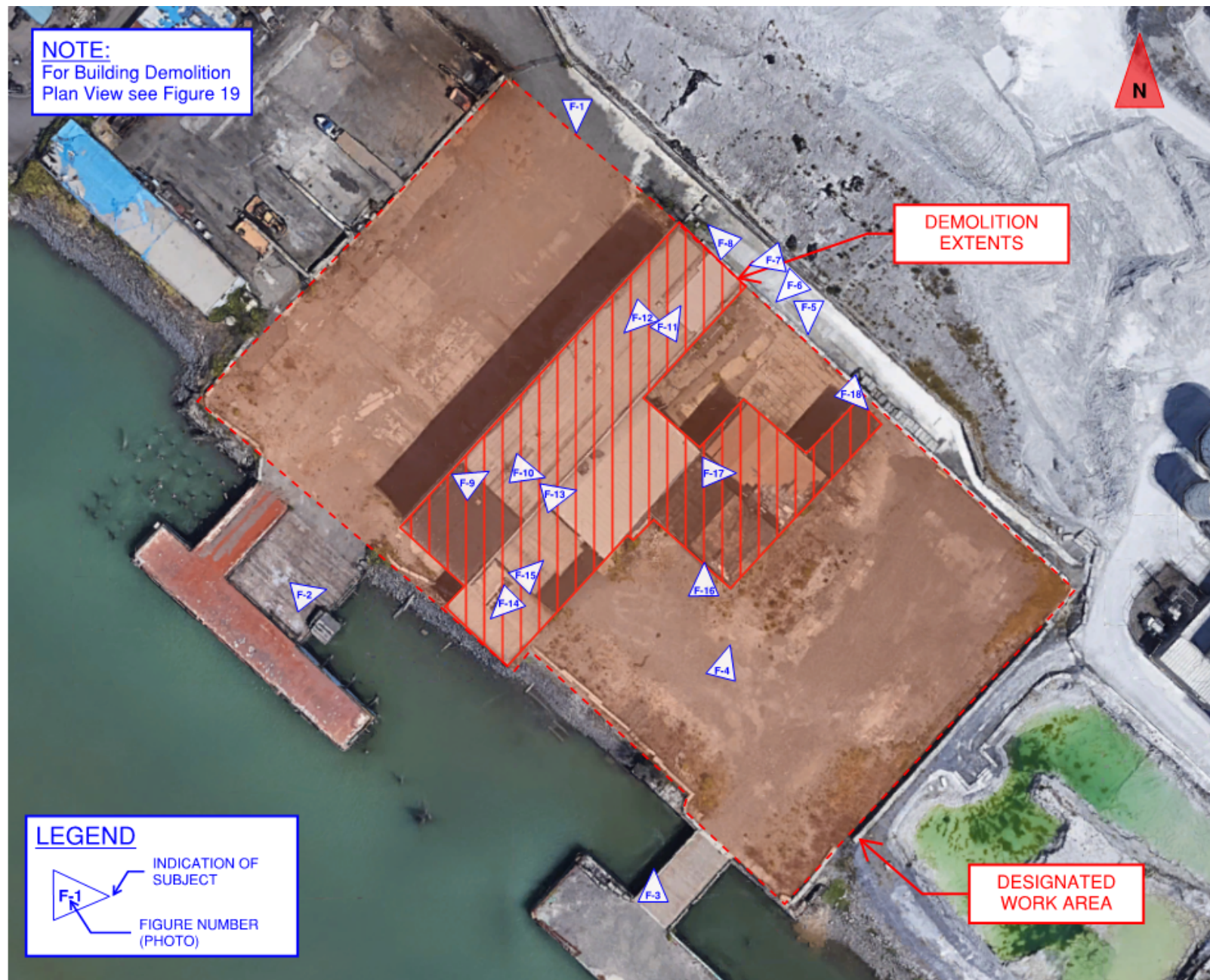


# 1110 Alexander Avenue Final Condition Plan





# 1110 Alexander Avenue Demolition Figure Index



## Demolition Legend



Demolish Building Structure.



Demolish/Remove Existing Vegetation.



Demolish/Remove Existing Debris/Non-Building Component. (See General Note 6.)

## Demolition Key Note Legend



Demolish building structure.



Aerial utilities between the pole and the building to be removed and disconnected at the pole. Port will coordinate utility disconnection with City.



Existing facilities shall remain.



Demolish/remove existing debris/non-building component. (See General Note 6.)



Demolish/remove existing vegetation.



Plug existing utility at ground or slab surface.



Existing concrete slab/foundation to remain.



Existing pavement to remain.

## General Notes

1. Dispose of building and site demolition debris in accordance with specification requirements.
2. Abate all regulatory materials prior to commencing building demolition work.
3. Plug all utility penetrations (i.e. conduit, plumbing, equipment, storm drain) below finish grades in accordance with specification requirements.

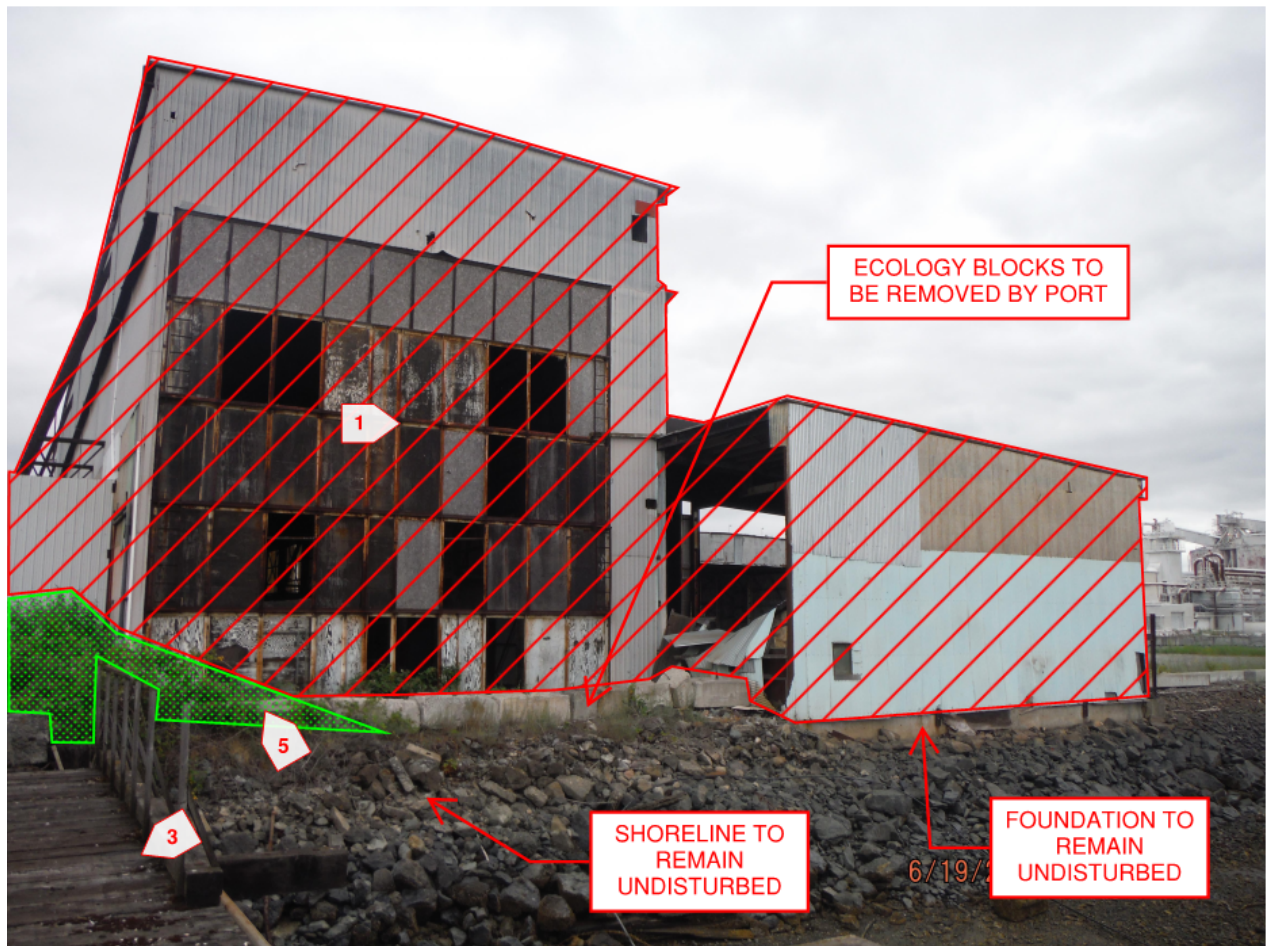
4. Remove all required vegetation per specifications.
5. Demolish building foundation i.e. stem walls and elevated slabs to the existing adjacent building slab or grade elevation that remains. There shall be no protrusions or dips above or below the adjacent slab elevation in the stem wall finished product. Backfill dips with ½" HMA to provide flush surface.
6. Debris shown in figures may already be removed, contractor shall verify conditions prior to bid.
7. In addition to the BMP's listed in the TESC Plan the following BMP's shall be implemented:
  - a. Use drip pans and absorbent materials for equipment and vehicles and ensure that an adequate supply of spill cleanup material is available.
  - b. Secure all materials to prevent discharges to receiving waters via wind.
  - c. Stockpile accumulated debris and waste generated during demolition away from watercourses.
  - d. Direct water away from work areas.
  - e. Ensure no demolition material or debris falls into water. Contractor shall immediately remove any debris that falls into the water.



**Figure 1 – 1110 Alexander Avenue Building Demolition Exterior Photograph**



**Figure 2 – 1110 Alexander Avenue Building Demolition Exterior Photograph**



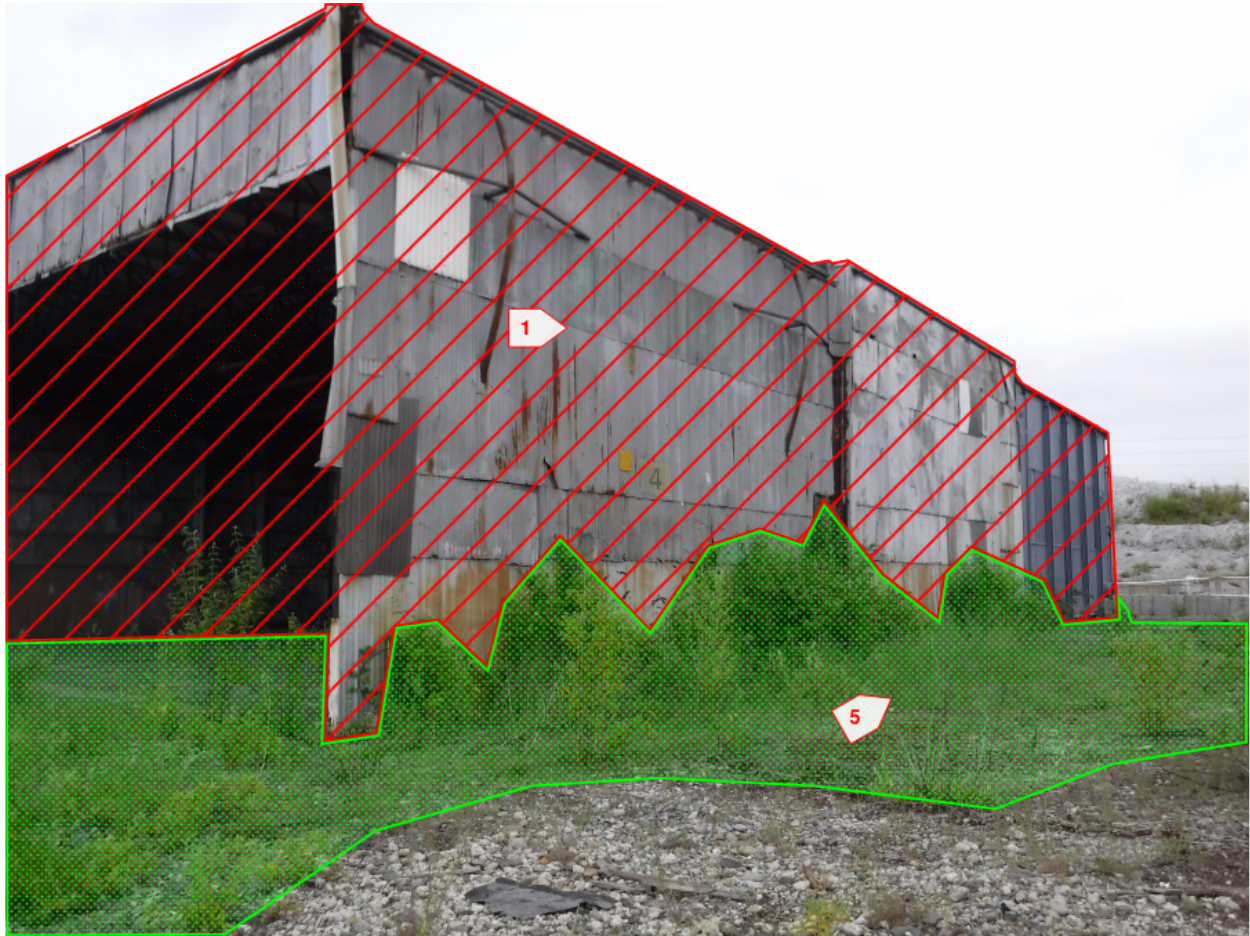


**Figure 3 – 1110 Alexander Avenue Building Demolition Exterior Photograph**

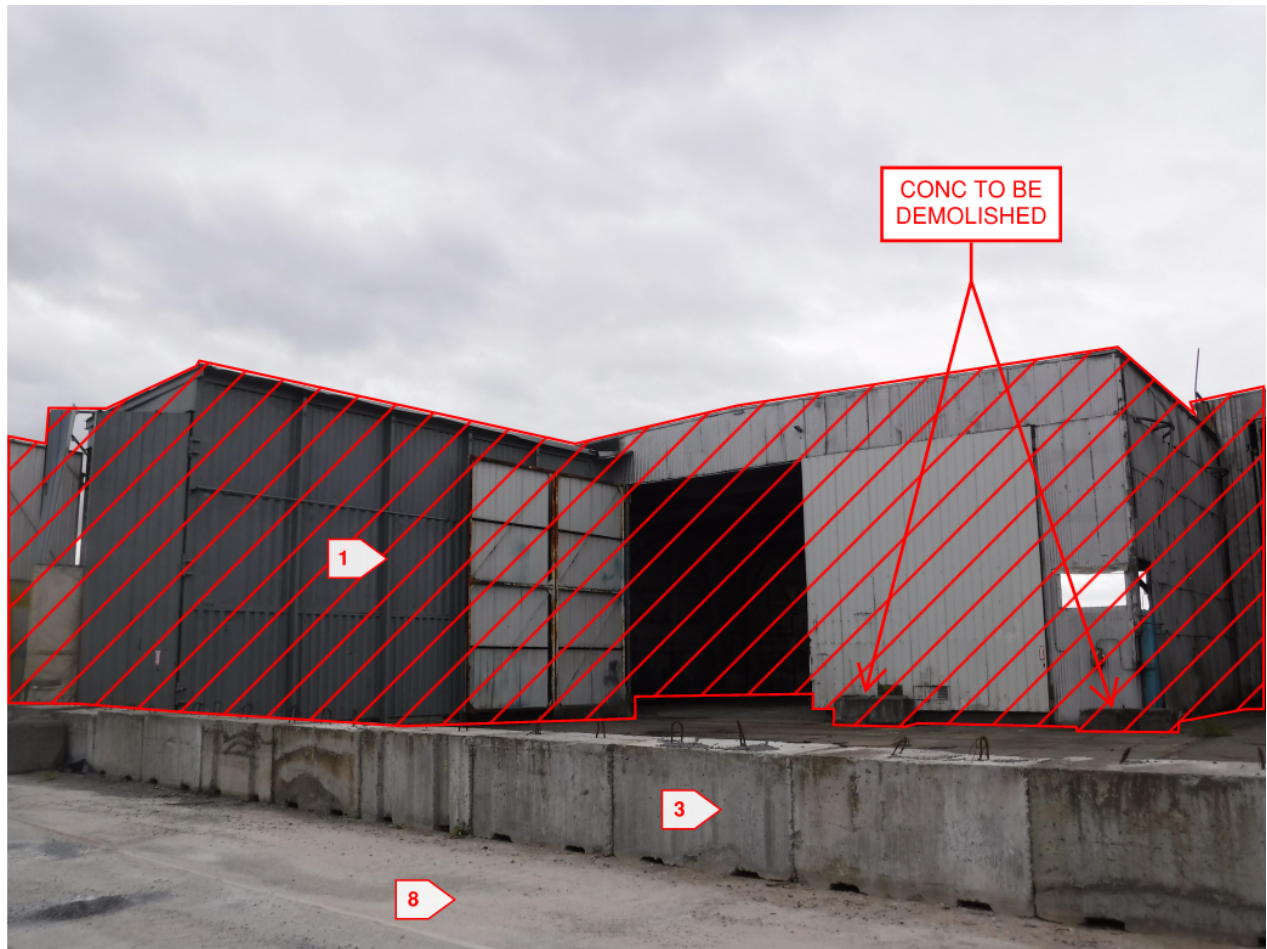




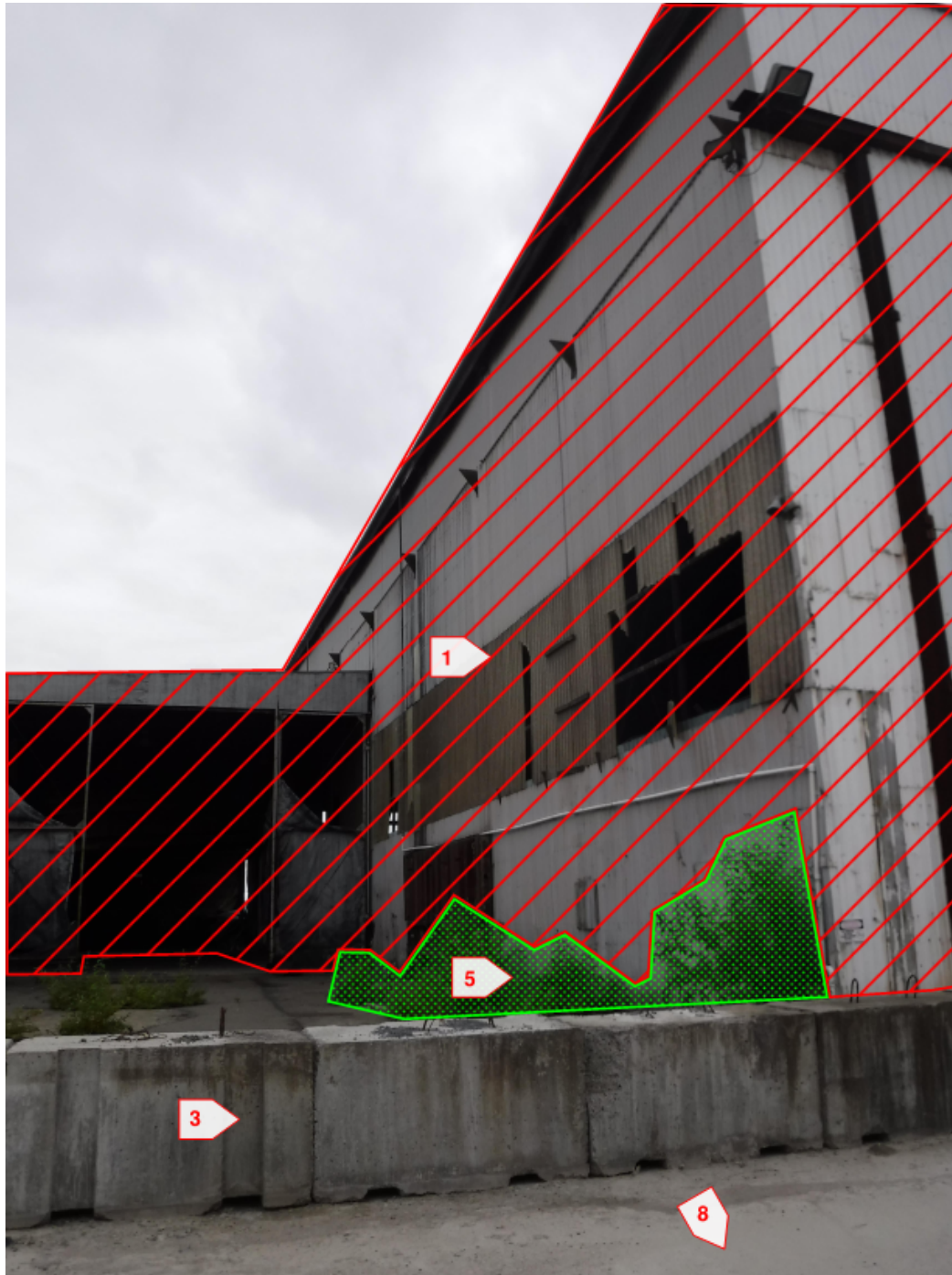
**Figure 4 – 1110 Alexander Avenue Building Demolition Exterior Photograph**



**Figure 5 – 1110 Alexander Avenue Building Demolition Exterior Photograph**

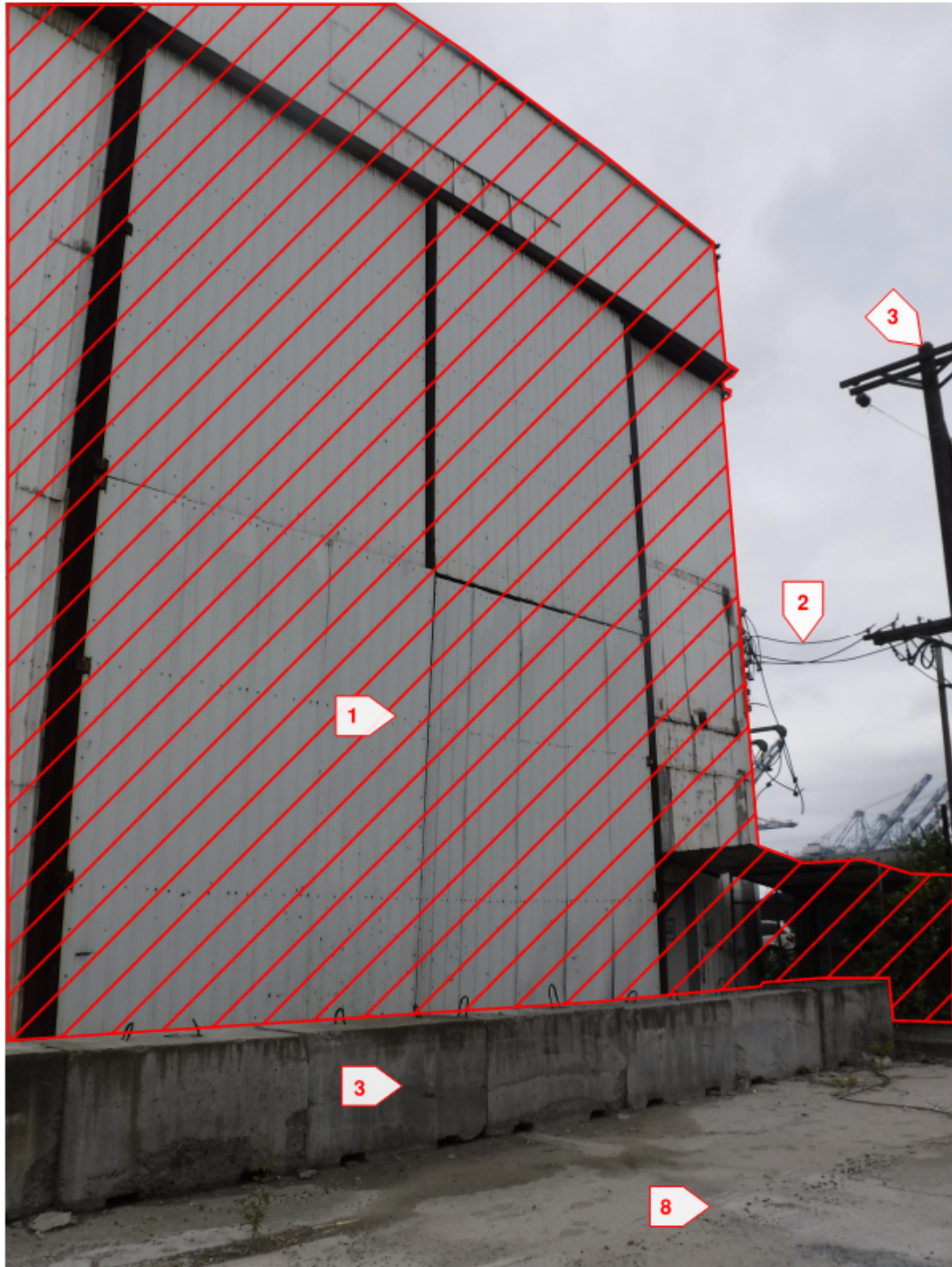


**Figure 6 – 1110 Alexander Avenue Building Demolition Exterior Photograph**





**Figure 7 – 1110 Alexander Avenue Building Demolition Exterior Photograph**



**Figure 8 – 1110 Alexander Avenue Building Demolition Exterior Photograph**

