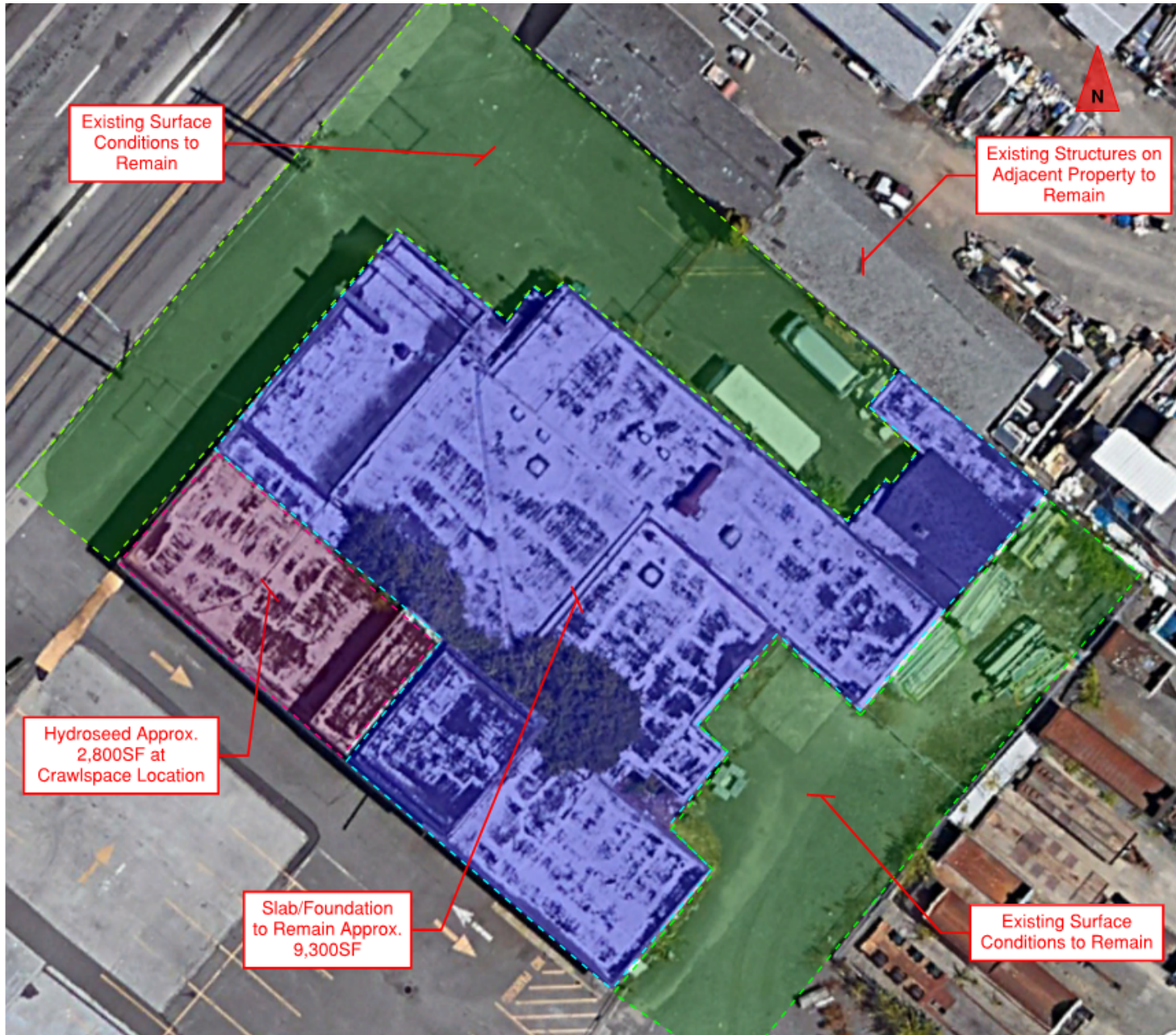
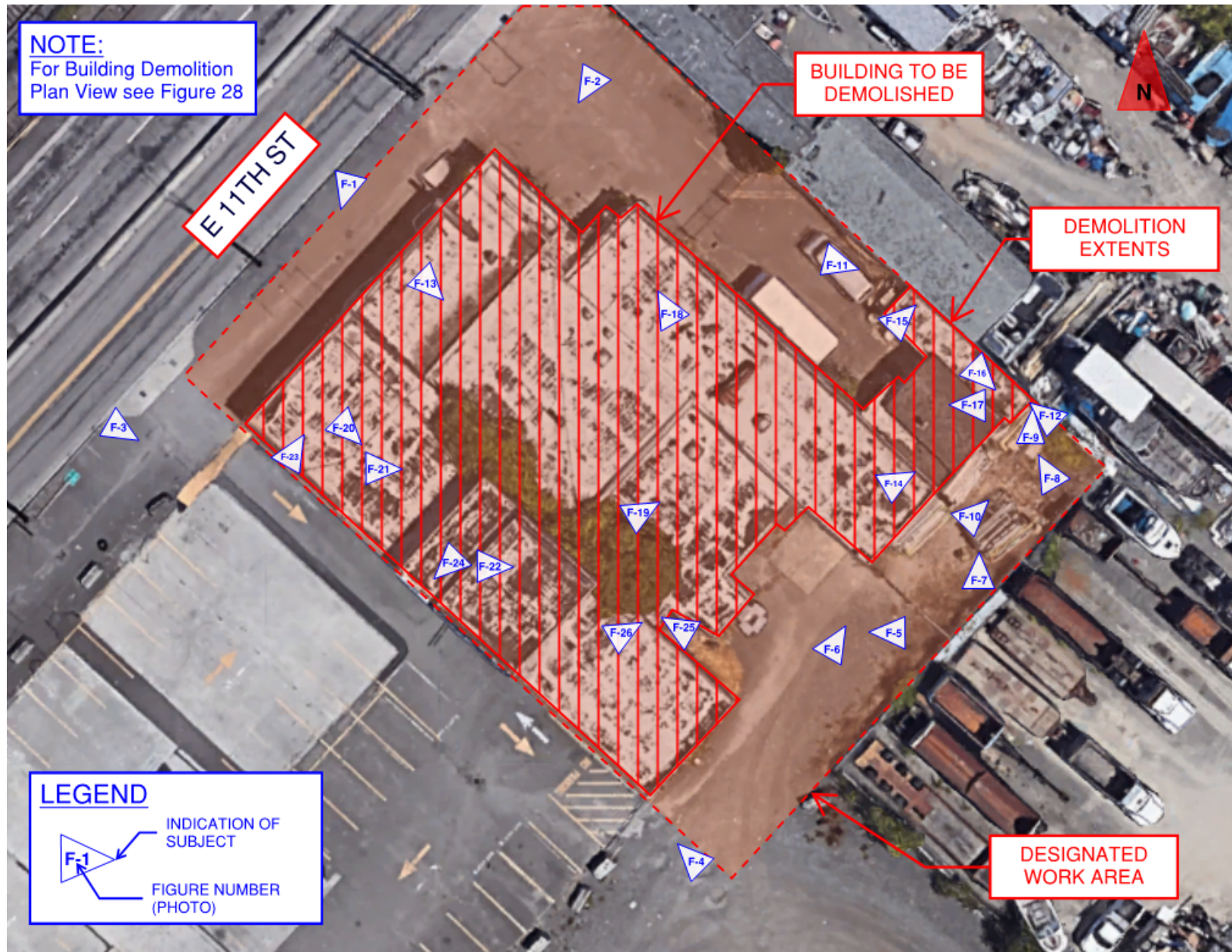


2338/2336 E 11th Street Building Final Condition Plan



2338/2336 E 11th Street Demolition Figure Index



Demolition Legend



Demolish Building Structure.



Demolish/Remove Existing Vegetation.



Demolish/Remove Existing Debris/Non-Building Component. (See General Note 6.)

Demolition Key Note Legend



Demolish building structure.



Aerial utilities between the pole and the building to be removed and disconnected at the pole. Port will coordinate utility disconnection with City.



Existing facilities shall remain.



Demolish/remove existing debris/non-building component. (See General Note 6.)



Demolish/remove existing vegetation.



Plug existing utility at ground or slab surface.



Existing concrete slab/foundation to remain.



Existing pavement to remain.

General Notes

1. Dispose of building and site demolition debris in accordance with specification requirements.
2. Abate all regulatory materials prior to commencing building demolition work.
3. Plug all utility penetrations (i.e. conduit, plumbing, equipment, storm drain) below finish grades in accordance with specification requirements. Contractor shall perform smoke test, sewer scope or otherwise to verify storm and sewer services are not shared with adjacent properties. Downspout lines and sanitary sewer

connections must be cut and permanently capped at their point of connection to the main line or nearest structure. (catch basin, manhole etc.)

4. Remove all required vegetation per specifications.
5. Demolish building foundation i.e. stem walls and elevated slabs to the existing adjacent building slab or grade elevation that remains. There shall be no protrusions or dips above or below the adjacent slab elevation in the stem wall finished product. Backfill dips with 1/2" HMA to provide flush surface.
6. Debris shown in figures may already be removed, contractor shall verify conditions prior to bid.
7. Stabilize remaining site by hydroseeding all exposed native soil within building footprint after demolition. (I.E. crawlspaces)

Figure 1 – 2338 E 11th Street Building Demolition Exterior Photograph



Figure 2 – 2338 E 11th Street Building Demolition Exterior Photograph

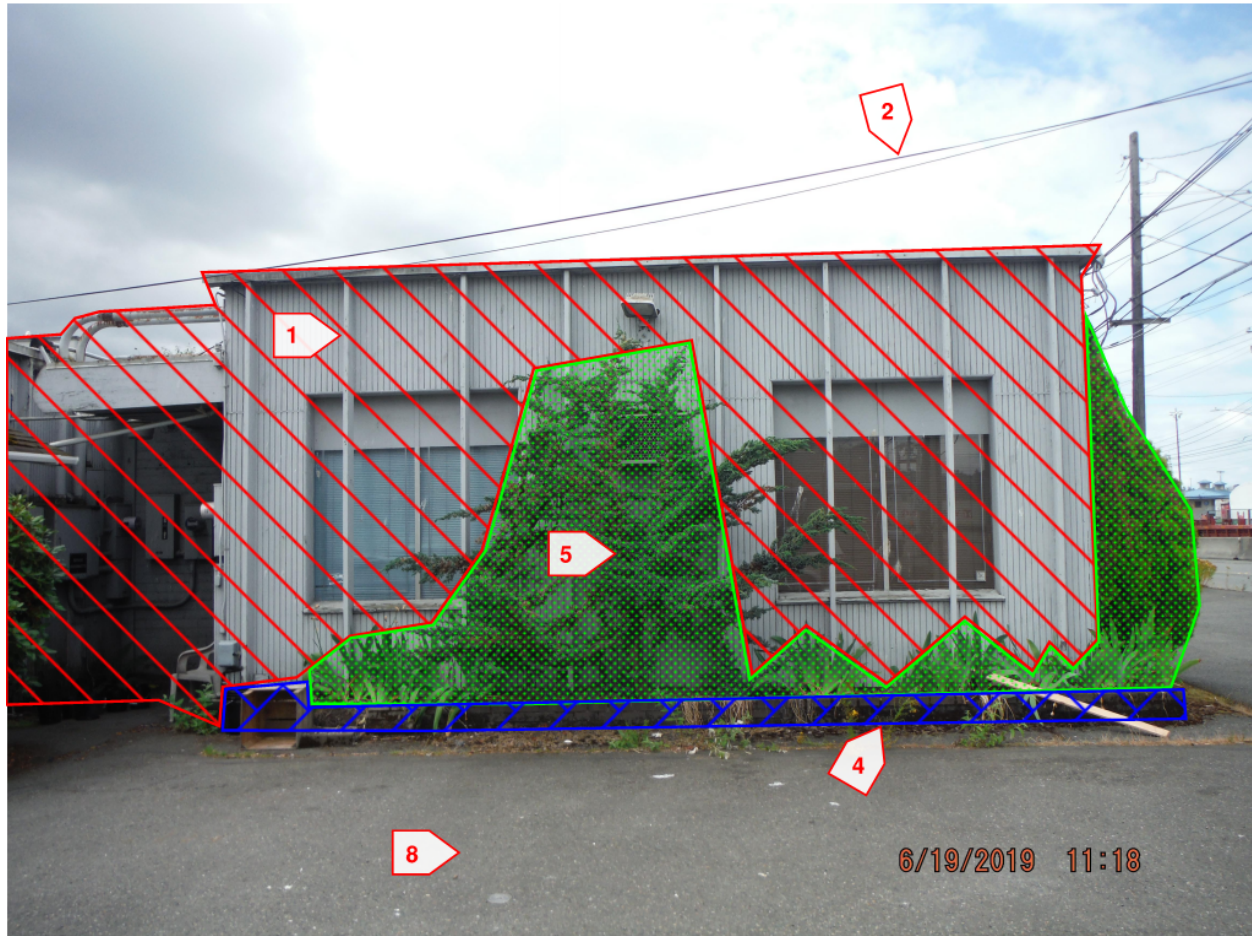


Figure 3 – 2338 E 11th Street Building Demolition Exterior Photograph



Figure 4 – 2338 E 11th Street Building Demolition Exterior Photograph

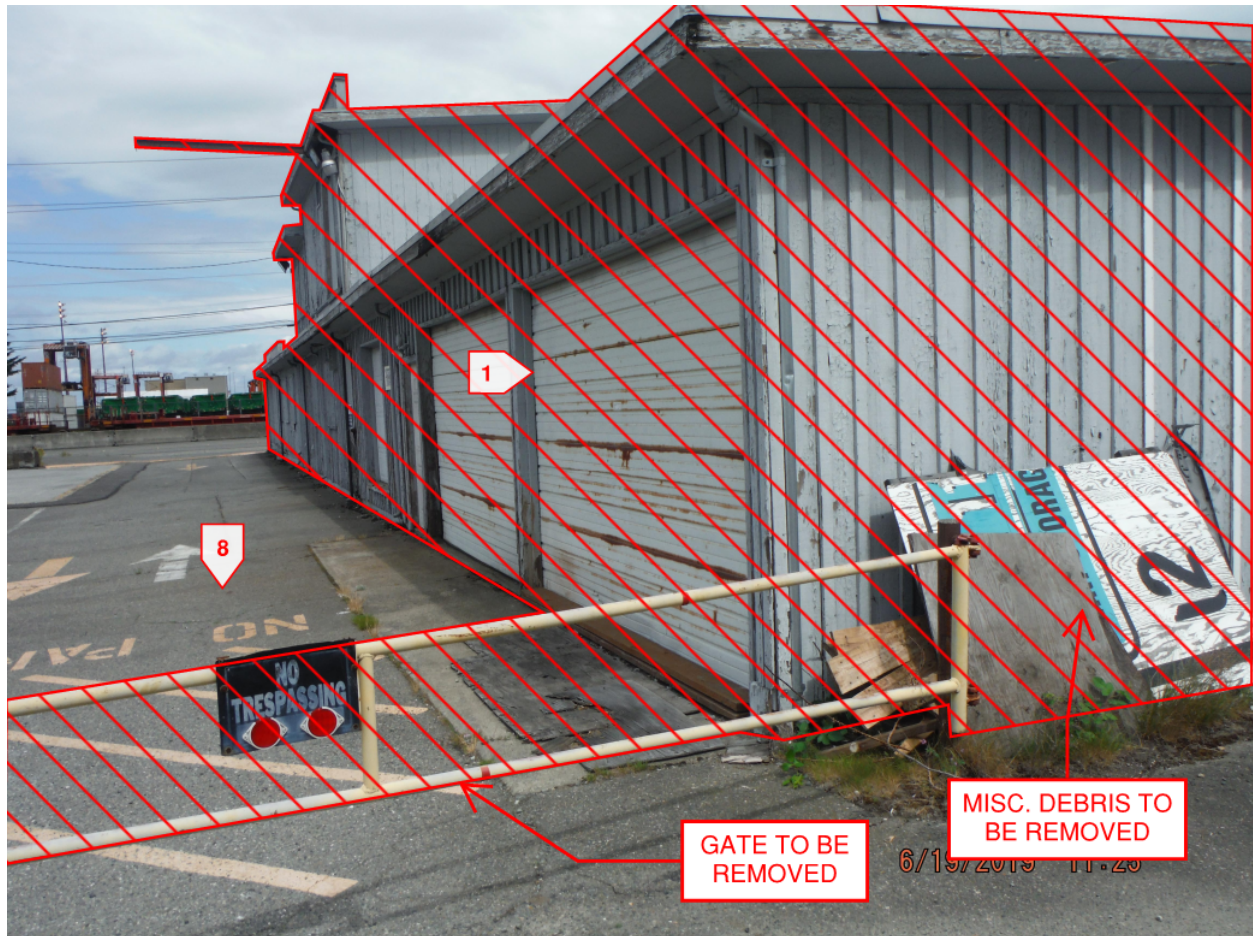


Figure 5 – 2338 E 11th Street Building Demolition Exterior Photograph

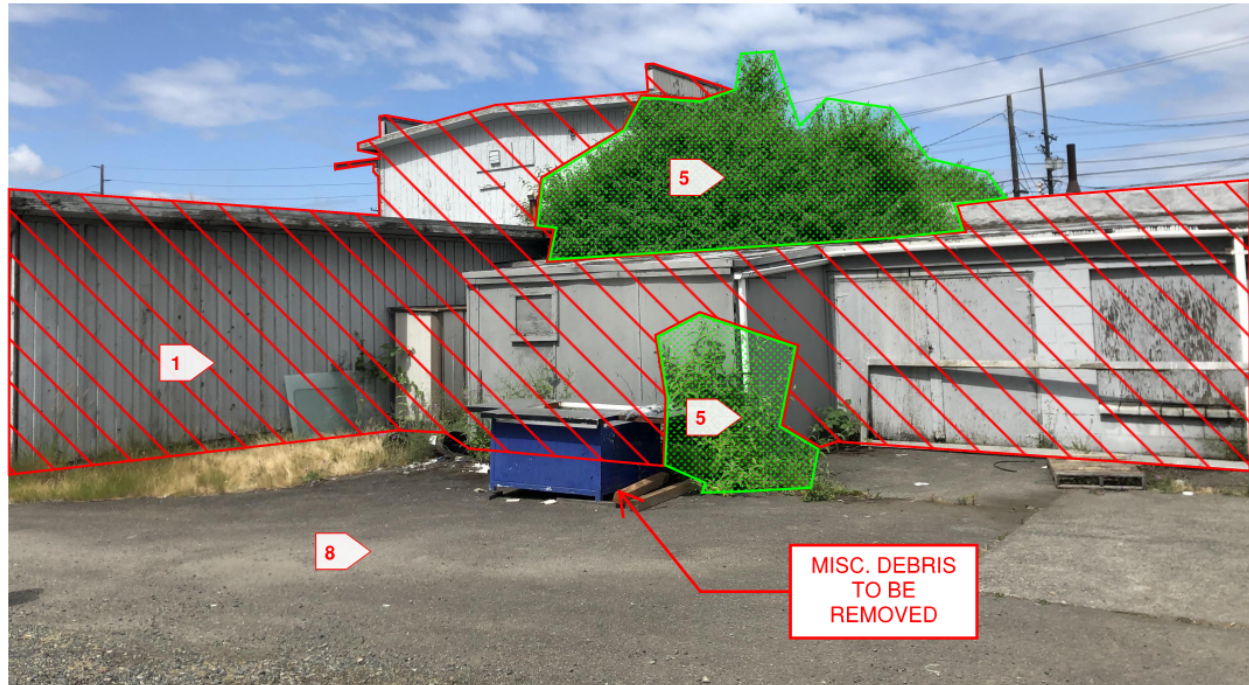


Figure 6 – 2338 E 11th Street Building Demolition Exterior Photograph

