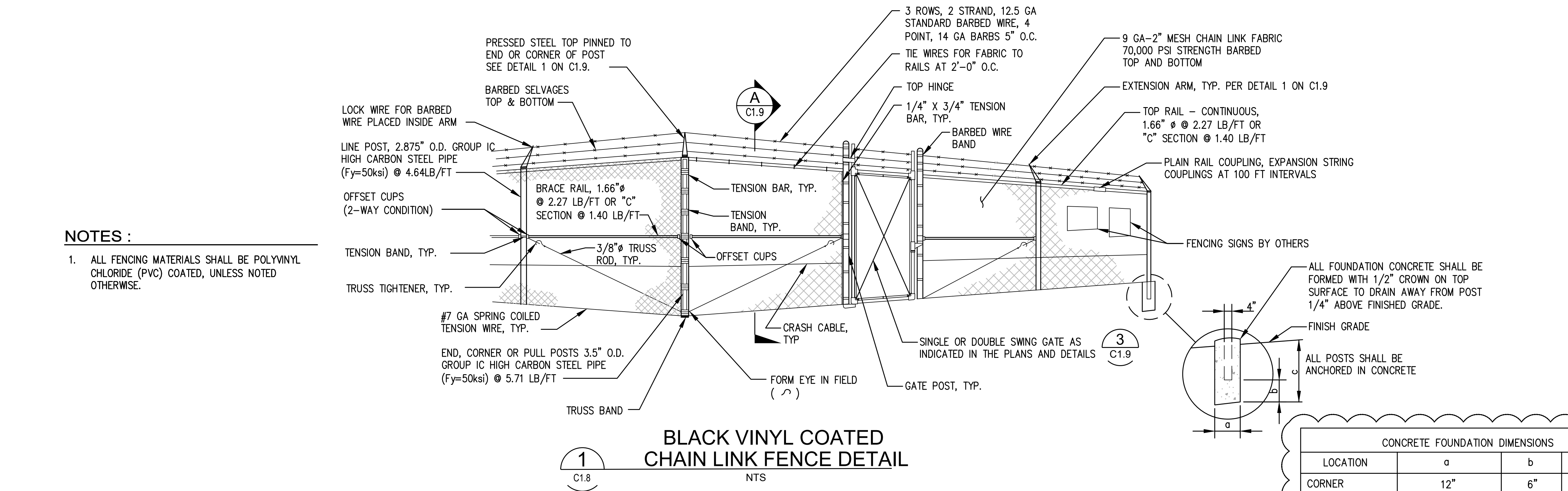
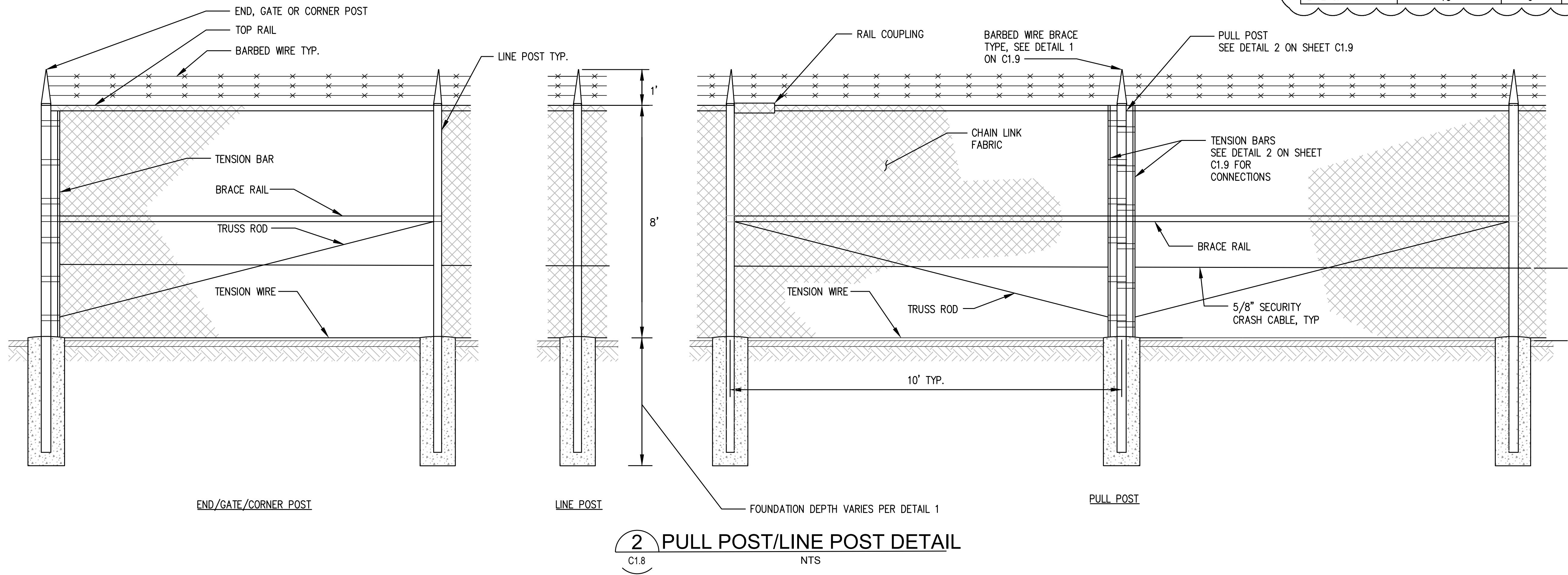


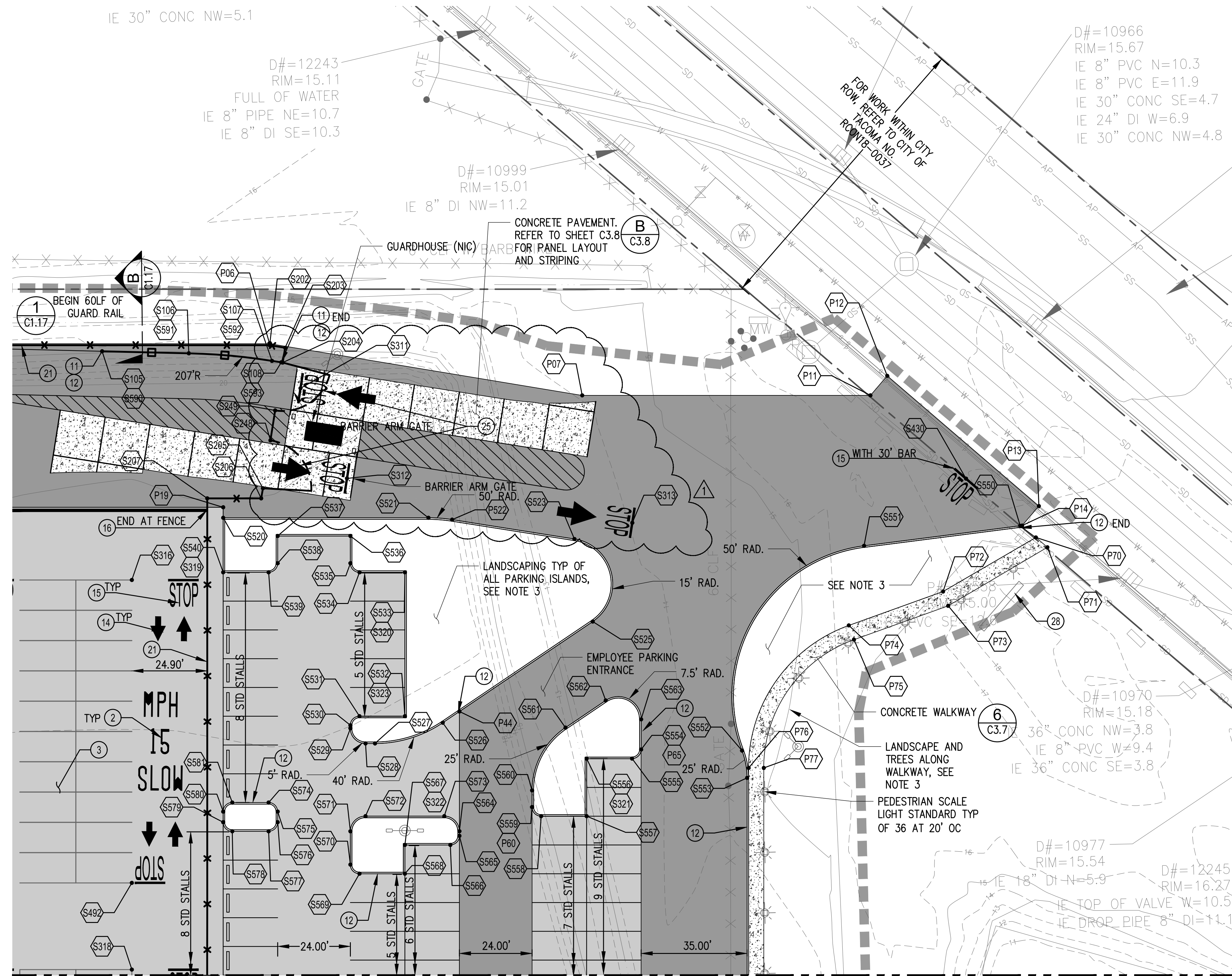
**THIS DRAWING IS THE PROPERTY OF THE PORT OF TACOMA AND SHALL NOT BE USED ON OTHER WORK, DISCLOSED, COPIED, IN WHOLE OR IN PART, WITHOUT WRITTEN PERMISSION**



CONCRETE FOUNDATION DIMENSIONS			
LOCATION	a	b	c
CORNER	12"	6"	4'-6"
END	12"	6"	4'-6"
GATE	18" + POST OD	6"	4'-6"
LINE & TYP	10"	6"	4'-6"



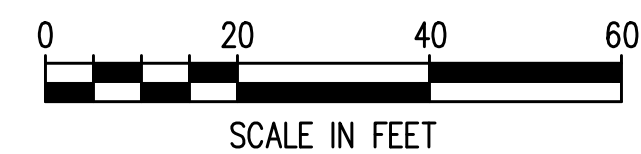




MATCH LINE SEE SHEET C1.12

## NORTH DRIVEWAY

1" 20"



## GENERAL NOTES

1. REFER TO SHEET G1.6 FOR LEGEND AND ABBREVIATIONS
2. SEE SHEET C1.6 FOR STRIPING DATA NOT SHOWN ON PLAN
3. SELECT SIGNAGE, AISLE LETTERING AND LINE NUMBERING NOT SHOWN ON PLANS. SEE DETAILS 1 AND 3 ON C1.11 FOR AISLE LETTERING AND LINE NUMBERING LOCATIONS, SIZE, AND COLOR. SEE C1.19 FOR ADD'L SIGNS TO BE PROVIDED.
4. SEE SHEETS C1.7 AND C3.6 FOR HORIZONTAL LAYOUT POINTS.
5. REFER TO C3.0 THROUGH C3.5 FOR PAVEMENT LAYOUT.

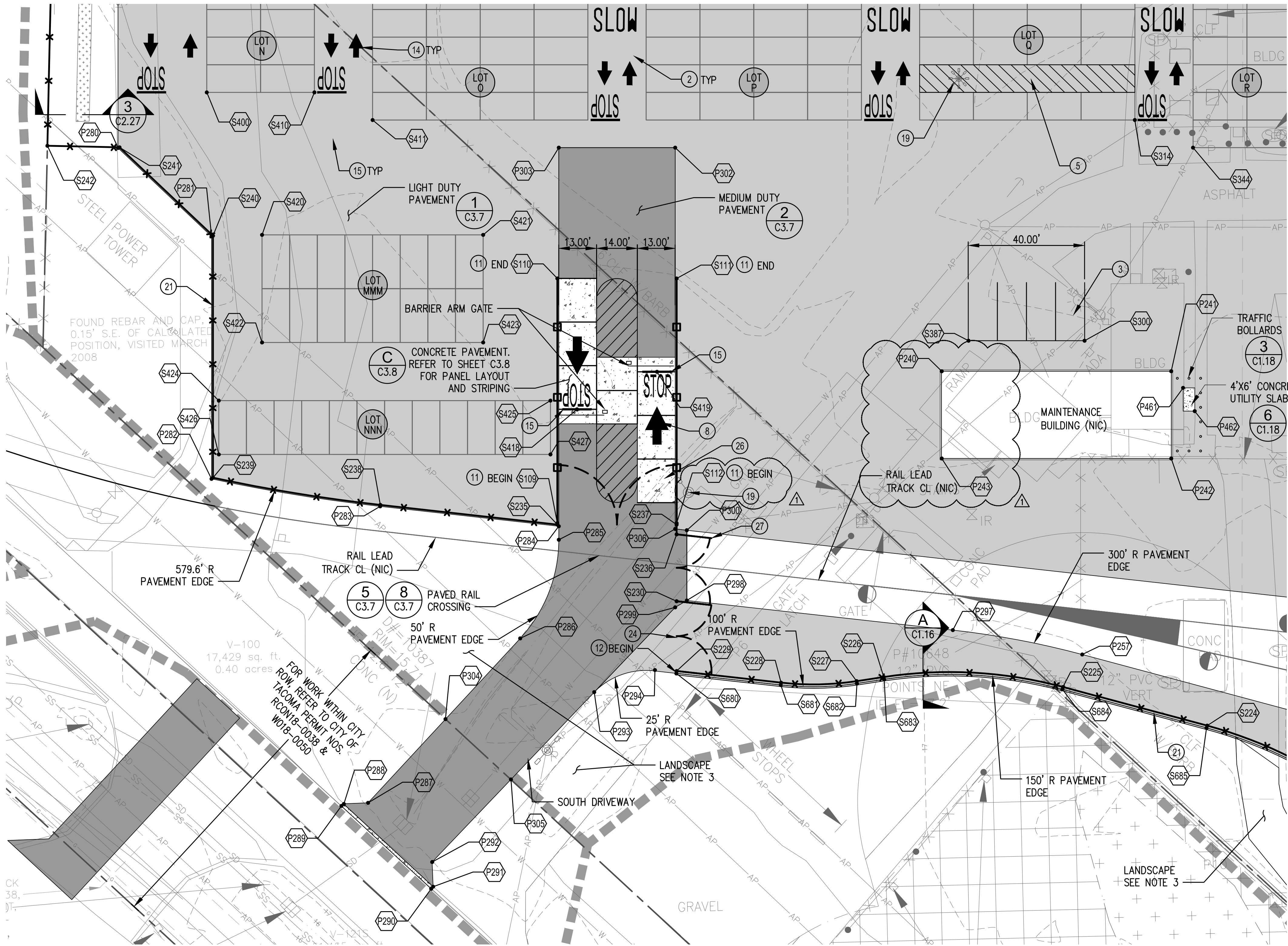
## SITE CONSTRUCTION NOTES

- ① PAINT STORAGE STALLS (9.5'X18.5') PER DETAIL 1 ON C1.15.
- ② PAINT 'SLOW 15 MPH' PAVEMENT MARKING PER DETAIL 6 ON C1.15.
- ③ PAINT HAULAWAY QUEUING BAYS (10'X20') PER DETAIL 3 ON C1.11.
- ④ PAINT RAIL LOADLINES PER DETAIL 4 ON C1.11
- ⑤ PAINT UTILITY CLEAR ZONE FOR LIGHT POLES PER DETAIL 6 ON C1.11.
- ⑥ PAINT EMPLOYEE PARKING LAYOUT PER DETAIL 5 ON C1.11.
- ⑦ WHEEL STOPS PER DETAIL 2 ON C1.15.
- ⑧ PAINT TRUCK DIRECTIONAL ARROWS PER DETAIL 3 ON C1.15.
- ⑨ PAINT CIRCULATION ARROWS PER DETAIL 11 ON C1.15.
- ⑩ NOT USED
- ⑪ GUARD RAIL, PER DETAIL 1 ON C1.17.
- ⑫ VERTICAL CURB, PER DETAIL 1 ON C1.15.
- ⑬ BICYCLE LOCKER WITH LOCKING SYSTEM AND VIEW HOLE, QTY 2 EA., BY OTHERS
- ⑭ PAINT AUTO DIRECTIONAL ARROW PER DETAIL 4 ON C1.15.
- ⑮ PAINT 'STOP' PAVEMENT MARKING PER DETAIL 5 ON C1.15.
- ⑯ PAINT 'NO-TRUCKS' LINE PER DETAILS 7 ON C1.15 AND 1 ON C1.10.
- ⑰ PAINT MOBILE RAMP PARKING AREA PER DETAIL 3 ON C1.10.
- ⑱ PAINT HAULAWAY TRUCK LOADING PLAZA PER DETAIL 1 ON C1.10.
- ⑲ PAINT HIGH MAST LIGHT POLES PER DETAIL 8 ON C1.15.
- ⑳ INSTALL BRIDGE PLATE RACK PER DETAIL 1 ON C1.16.
- ㉑ FENCE PER DETAILS ON C1.8 & C1.9
- ㉒ 4 FT SINGLE LEAF MAN GATE PER DETAILS ON C1.8 & C1.9
- ㉓ 15 FT SINGLE LEAF UTILITY GATE PER DETAILS ON C1.8 & C1.9
- ㉔ 24 FT DOUBLE LEAF RAIL GATE PER DETAILS ON C1.8 & C1.9
- ㉕ 16 FT SINGLE LEAF ENTRANCE GATE PER DETAILS ON C1.8 & C1.9
- ㉖ 41 FT DOUBLE LEAF ENTRANCE GATE PER DETAILS ON C1.8 & C1.9
- ㉗ 23 FT DOUBLE LEAF ENTRANCE GATE PER DETAILS ON C1.8 & C1.9
- ㉘ MONUMENT SIGN, BY OTHERS, PER DETAIL 3 ON C1.19, FINAL LOCATION TO BE REVIEWED AND APPROVED BY ENGINEER PRIOR TO INSTALLATION.
- ㉙ FLAGPOLE, FOUNDATION PER DETAIL 5 ON C1.19 OR AS DESIGNED BY FLAG POLE SUPPLIER.

## NOTES

1. ALL DIMENSIONS ARE TO FACE OF CURB, UNLESS NOTED OTHERWISE.
2. ALL CURB FACE RADII SHALL BE 3 FEET, UNLESS NOTED OTHERWISE.
3. SEE LANDSCAPE SHEET L1.1
4. PAVE TO CURB WHERE PAVEMENT LAYOUT POINTS ARE NOT SHOWN





## GENERAL NOTES

- REFER TO SHEET G1.6 FOR LEGEND AND ABBREVIATIONS
- SEE SHEET C1.6 FOR STRIPING DATA NOT SHOWN ON PLAN
- SELECT SIGNAGE, AISLE LETTERING AND LINE NUMBERING NOT SHOWN ON PLANS. SEE DETAILS 1 AND 3 ON C1.11 FOR AISLE LETTERING AND LINE NUMBERING LOCATIONS, SIZE, AND COLOR. SEE C1.19 FOR ADD'L SIGNS TO BE PROVIDED.
- SEE SHEETS C1.7 AND C3.6 FOR HORIZONTAL LAYOUT POINTS.
- REFER TO C3.0 THROUGH C3.5 FOR PAVEMENT LAYOUT.

## SITE CONSTRUCTION NOTES

- PAINT STORAGE STALLS (9.5'X18.5') PER DETAIL 1 ON C1.11.
- PAINT 'SLOW 15 MPH' PAVEMENT MARKING PER DETAIL 6 ON C1.15.
- PAINT HAULAWAY QUEUING BAYS (10'X20') PER DETAIL 3 ON C1.11.
- PAINT RAIL LOADLINES PER DETAIL 4 ON C1.11
- PAINT UTILITY CLEAR ZONE FOR LIGHT POLES PER DETAIL 6 ON C1.11.
- PAINT EMPLOYEE PARKING LAYOUT PER DETAIL 5 ON C1.11.
- WHEEL STOPS PER DETAIL 2 ON C1.15.
- PAINT TRUCK DIRECTIONAL ARROWS PER DETAIL 3 ON C1.15.
- PAINT CIRCULATION ARROWS PER DETAIL 11 ON C1.15.
- NOT USED
- GUARD RAIL, PER DETAIL 1 ON C1.17.
- VERTICAL CURB, PER DETAIL 1 ON C1.15.
- BICYCLE LOCKER WITH LOCKING SYSTEM AND VIEW HOLE, QTY 2 EA., BY OTHERS
- PAINT AUTO DIRECTIONAL ARROW PER DETAIL 4 ON C1.15.
- PAINT 'STOP' PAVEMENT MARKING PER DETAIL 5 ON C1.15.
- PAINT 'NO-TRUCKS' LINE PER DETAILS 7 ON C1.15 AND 1 ON C1.10.
- PAINT MOBILE RAMP PARKING AREA PER DETAIL 3 ON C1.10.
- PAINT HAULAWAY TRUCK LOADING PLAZA PER DETAIL 1 ON C1.10.
- PAINT HIGH MAST LIGHT POLES PER DETAIL 8 ON C1.15.
- INSTALL BRIDGE PLATE RACK PER DETAIL 1 ON C1.16.
- FENCE PER DETAILS ON C1.8 & C1.9
- 4 FT SINGLE LEAF MAN GATE PER DETAILS ON C1.8 & C1.9
- 15 FT SINGLE LEAF UTILITY GATE PER DETAILS ON C1.8 & C1.9
- 24 FT DOUBLE LEAF RAIL GATE PER DETAILS ON C1.8 & C1.9
- 16 FT SINGLE LEAF ENTRANCE GATE PER DETAILS ON C1.8 & C1.9
- 41 FT DOUBLE LEAF ENTRANCE GATE PER DETAILS ON C1.8 & C1.9
- 23 FT DOUBLE LEAF ENTRANCE GATE PER DETAILS ON C1.8 & C1.9
- MONUMENT SIGN, BY OTHERS, PER DETAIL 3 ON C1.19, FINAL LOCATION TO BE REVIEWED AND APPROVED BY ENGINEER PRIOR TO INSTALLATION.
- FLAGPOLE, FOUNDATION PER DETAIL 5 ON C1.19 OR AS DESIGNED BY FLAG POLE SUPPLIER.

## NOTES

- ALL DIMENSIONS ARE TO FACE OF CURB OR EDGE OF PAVEMENT, UNLESS NOTED OTHERWISE.
- ALL CURB FACE RADII SHALL BE 3 FEET, UNLESS NOTED OTHERWISE.
- SEE LANDSCAPE SHEET L1.2
- PAVE TO CURB WHERE PAVEMENT LAYOUT POINTS ARE NOT SHOWN

<b>C1.14</b> 44 OF 163	<b>PARCEL 77 AUTO IMPORT TERMINAL</b>				<b>APPROVED:</b>		CMB	5/7/2018	<b>Port of Tacoma</b> 2407 North 31st Street, Suite 100 Tacoma, Washington 98407 (253) 396-0150 Fax (253) 396-0162 P.O. BOX 1837 TACOMA, WA 98401 (253)396-5441		
	<b>SOUTH DRIVEWAY</b>				<b>5/7/2018</b>		CMB	5/7/2018	<b>kpff</b>		
	<b>SITE PLAN</b>				<b>5/9/2018</b>		CMB	5/9/2018	<b>MADE KNOXLEY</b>		
	<b>CONTRACT/CONS: 070770</b>				<b>SECTION: 3E</b>		<b>DATE: 06/06/2018</b>		<b>REGISTERED PROFESSIONAL</b>		
<b>M. ID: 201020.01</b>				<b>RANGE: 3E</b>				<b>PRINTED BY: chennett</b>		<b>DATE: 06/06/2018</b>	
<b>PHASE: BID SET</b>				<b>VERT: PORT OF TACOMA BM#</b>				<b>PORT ADDRESS: ONE SITCOM PLAZA</b>		<b>REVISION: ADDENDUM #4</b>	
				<b>PARCEL: MULTIPLE</b>				<b>DRAWING SCALE: AS SHOWN</b>		<b>TACOMA WA 98401-1837</b>	

THIS DRAWING IS THE PROPERTY OF THE PORT OF TACOMA AND SHALL NOT BE USED ON OTHER WORK, DISCLOSED, COPIED, IN WHOLE OR IN PART, WITHOUT WRITTEN PERMISSION



