

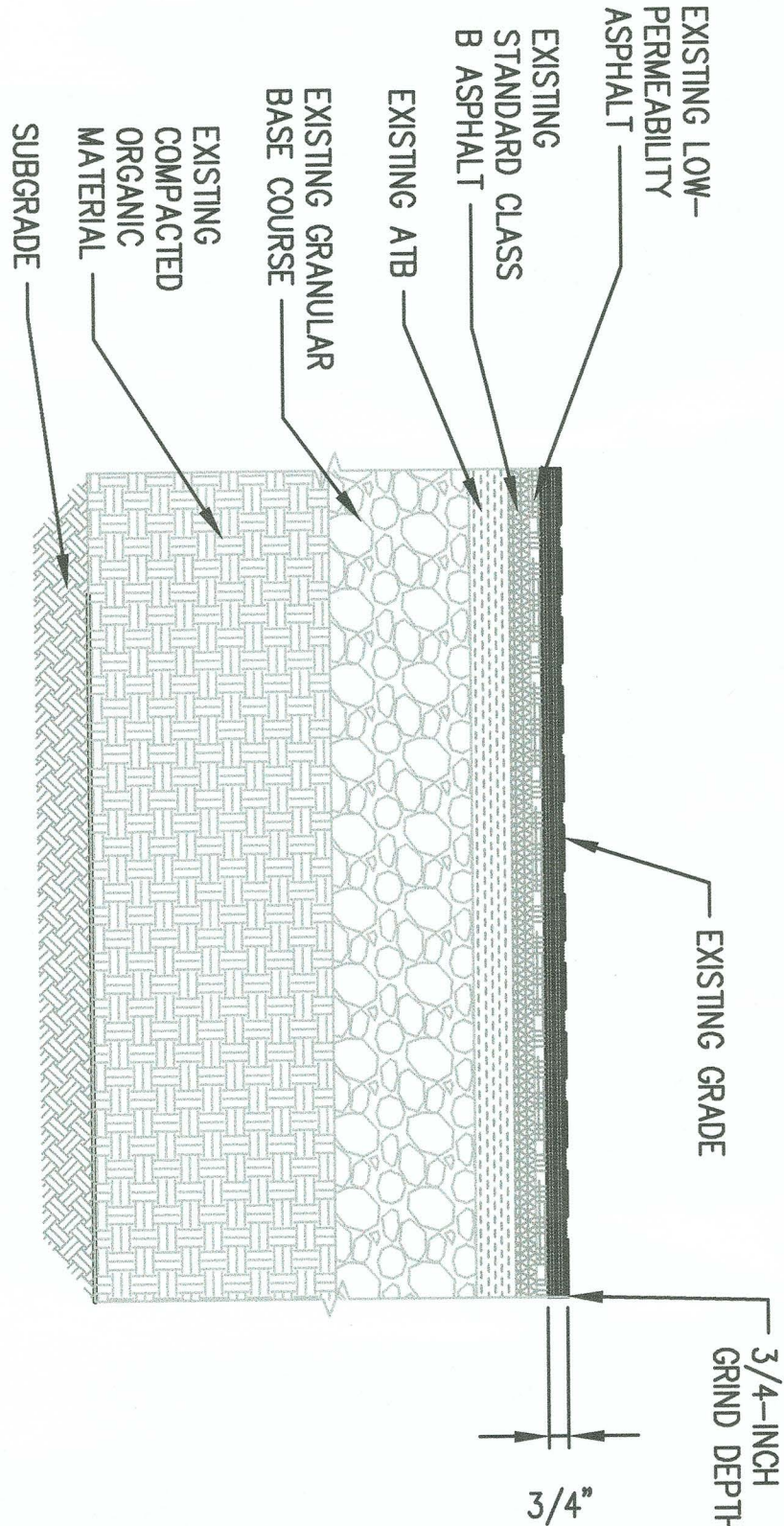
NOTES:

1. INSERT SHALL BE INSTALLED IN ALL OPERATIONAL CATCH BASINS WITHIN 100 FEET OF WORK LIMITS PRIOR TO CLEARING AND GRADING ACTIVITY, OR UPON PLACEMENT OF A NEW CATCH BASIN.
2. FILTERS SHALL BE INSPECTED AFTER EACH STORM EVENT AND CLEANED OR REPLACED WHEN IT IS 1/3 FULL.
3. SEDIMENT REMOVAL SHALL BE ACCOMPLISHED BY REMOVING THE INSERT, EMPTYING INTO APPROPRIATE DISPOSAL LOCATION, AND REINSERTING IT INTO THE CATCH BASIN.

1 INLET PROTECTION DETAIL

SCALE: NTS

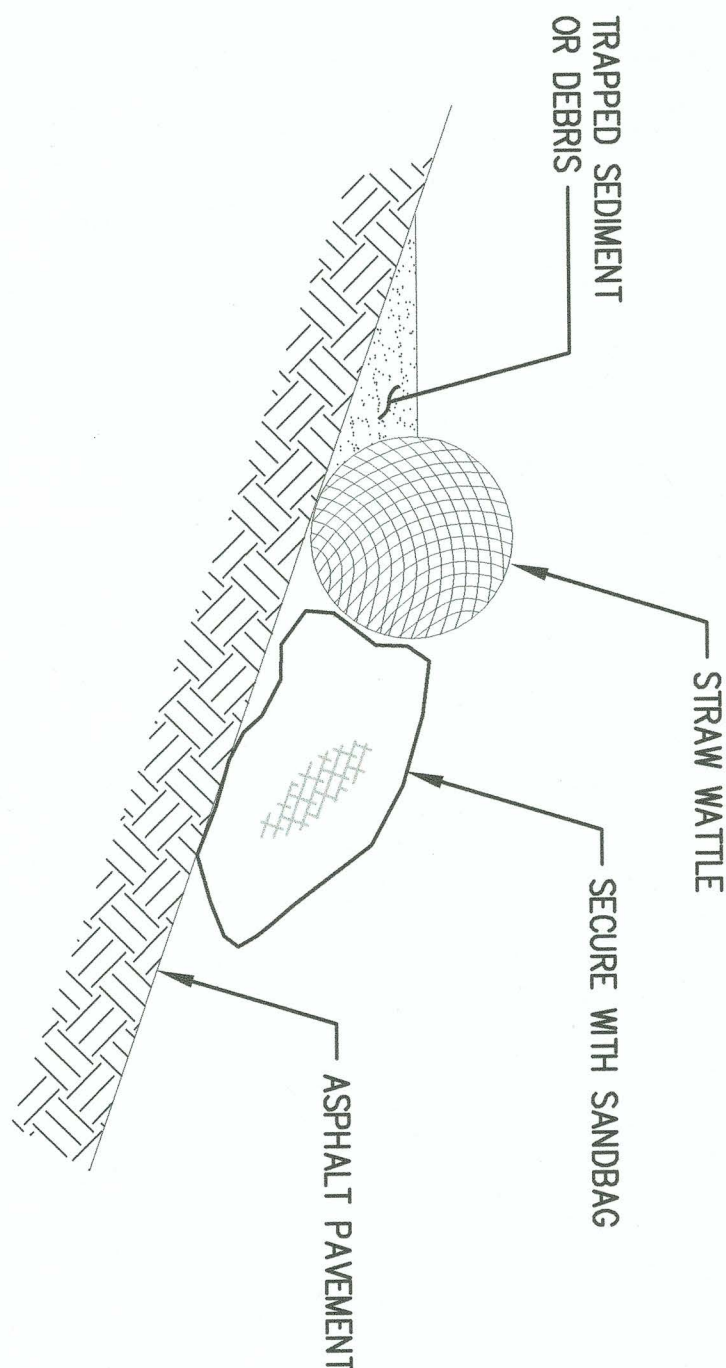
C1.0-C1.1



3 3/4" ASPHALT GRIND DETAIL

SCALE: NTS

C1.0-C1.1



NOTES:

1. LAY WATTLES PERPENDICULAR TO THE FLOW DIRECTION AND PARALLEL TO THE SLOPE CONTOUR.
2. SANDBAGS OF EITHER BURLAP OR WOVEN GEOTEXTILE FABRIC ARE FILLED WITH GRAVEL AND SAND.
3. INSPECT BARRIERS AND REMOVE SEDIMENT AFTER EACH STORM EVENT.
4. SECURE STRAW WATTLE TO PAVEMENT SURFACE WITH SANDBAG.

2 STRAW WATTLE DETAIL

SCALE: NTS

C1.0-C1.1

TEMPORARY EROSION AND SEDIMENT CONTROL (TESC) NOTES:

1. THE IMPLEMENTATION OF THESE PLANS AND THE CONSTRUCTION, REGULAR REVIEW, MAINTENANCE, REPLACEMENT, AND CONSTRUCTION STORMWATER POLLUTION PREVENTION PLAN (SWPPP), AND UPGRADE, THESE FACILITIES IS THE RESPONSIBILITY OF THE CONTRACTOR IN ACCORDANCE WITH PROJECT SPECIFICATIONS AND PLANS UNTIL ALL CONSTRUCTION IS APPROVED AND ACCEPTED BY THE ENGINEER.
2. THE TESC FACILITIES SHOWN ON THIS PLAN SHALL BE CONSTRUCTED PRIOR TO ALL CLEARING AND DEMOLITION SO AS TO ENSURE THAT TRANSPORT OF SEDIMENT TO SURFACE WATERS, DRAINAGE SYSTEMS, AND ADJACENT PROPERTIES IS MINIMIZED. THE TYPICAL WET SEASON RUNS FROM OCTOBER 1 THROUGH APRIL 30, AND THE DRY SEASON FROM MAY 1 THROUGH SEPTEMBER 30.
3. THE TESC FACILITIES SHALL BE INSPECTED DAILY BY THE TESC SUPERVISOR AND MAINTAINED TO ENSURE CONTINUED PROPER FUNCTIONING IN ACCORDANCE WITH THE SPECIFICATIONS.
4. CONTRACTOR SHALL MAINTAIN EROSION CONTROL MEASURES AT ALL TIMES TO THE REQUIREMENTS OF THE PERMITS, SPECIFICATIONS AND MINIMUM REQUIREMENTS SHOWN IN PLANS.
5. THE TESC MEASURES SHOWN ON THESE PLANS ARE MINIMUM REQUIREMENTS. SHOULD TEMPORARY EROSION AND SEDIMENT CONTROL MEASURES AS SHOWN ON THE PLANS BECOME INADEQUATE, THE CONTRACTOR SHALL INSTALL BMPs AND/OR FACILITIES AS NECESSARY TO PROTECT ADJACENT PROPERTIES, WATERBODIES, CITY OF TACOMA DRAINAGE SYSTEMS, AND EXISTING PORT DRAINAGE SYSTEMS MEETING THE APPROVAL OF THE ENGINEER.
6. AS A GENERAL RULE, ANY AREAS OF EXPOSED SOILS, INCLUDING EMBANKMENTS, THAT WILL NOT BE DISTURBED FOR TWO DAYS DURING THE WET SEASON OR SEVEN DAYS DURING THE DRY SEASON SHALL BE IMMEDIATELY STABILIZED WITH THE APPROVED TESC BMP METHODS.
7. INLET PROTECTION SHALL BE INSPECTED AFTER EACH STORM EVENT AND CLEANED OR REPLACED WHEN 1/3 FULL.
8. THE CONTRACTOR SHALL PROTECT STOCKPILE AND EXCAVATION AREAS FROM THE RELEASE OF SEDIMENT. STOCKPILES SHALL BE COVERED AT ALL TIMES WHILE NOT IN USE TO KEEP THE STORED MATERIAL DRY.
9. ALL NON-SALVAGED MATERIAL REMOVED FROM THE SITE SHALL BE PLACED OR DISPOSED OF AT A PERMITTED SITE. CONTRACTOR SHALL OBTAIN CHARACTERIZATION DOCUMENTATION FROM THE ENGINEER FOR ALL MATERIAL PRIOR TO HAUL AND DISPOSAL.
10. THE CONTRACTOR SHALL BE RESPONSIBLE FOR FULL COMPLIANCE WITH THE WASHINGTON STATE DROPPING LOAD OR OTHER MATERIALS COVERING LAWS (RCW 46.51.655-3/4).
11. PAVED AREAS SHALL BE SWEEP AS NECESSARY TO PREVENT SEDIMENT AND DUST TRACKING ONTO THE PAVED AREAS.
12. PREVENTATIVE MEASURES TO MINIMIZE THE WIND TRANSPORT OF SOIL SHALL BE TAKEN WHEN SEDIMENT TRANSPORTED BY THE WIND IS LIKELY TO BE DEPOSITED IN DRAINAGE WAYS, WATER RESOURCES, OR NON-PORT PROPERTY.
13. ALL TESC MEASURES SHALL BE REMOVED AND DISPOSED OF AT AN APPROVED SITE UPON PROJECT COMPLETION.

APPROVED:

SWK 08/17/17

CHECKED BY DATE

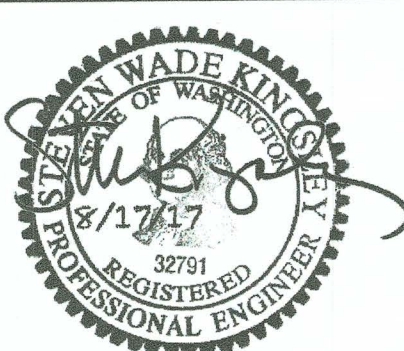
RGC 08/17/17

PROJ. ENGR DATE

PRINTED BY: rchandler Aug 17, 2017

PORT ADDRESS: ONE SITCUM PLAZA

TACOMA, WA 98401-1837



kppf
2407 North 31st Street, Suite 100
Tacoma, Washington 98407
(253) 396-0150 Fax (253) 396-0162

MARK:	REVISION:	BY:	APPR:	DATE:

Port of Tacoma
P.O. BOX 1837 TACOMA, WA 98401 (253)363-5841

APPR:	DATE:

<div>6562</div> <div>C1.2</div> <div>SHEET 7 OF 10</div>	ENVIRONMENTAL CAP REPAIRS - PARCEL 47			
	DEMO AND TESC DETAILS & NOTES			
	CONT/CONS: 070542	TOWNSHIP: 21	RANGE: 03	SECTION: 36
	M. ID:	DAT-HRZ: AS SHOWN	VERT:	PORT OF TACOMA
	PHASE: BID SET	PARCEL: 5000350470	DRAWING SCALE: AS SHOWN	



MATCH LINE - SEE SHEET C2.1

KEY NOTES:

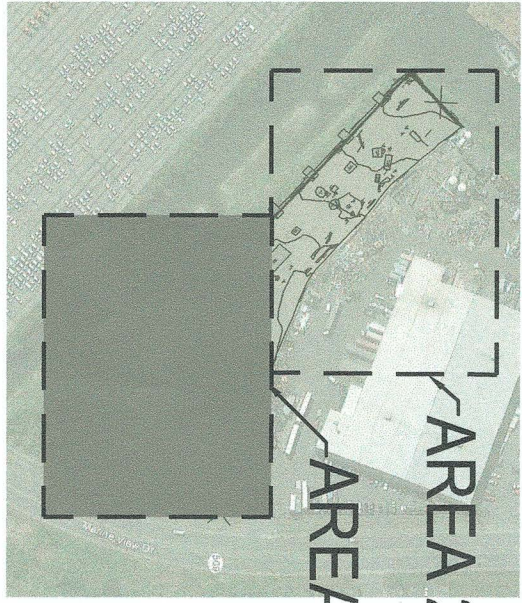
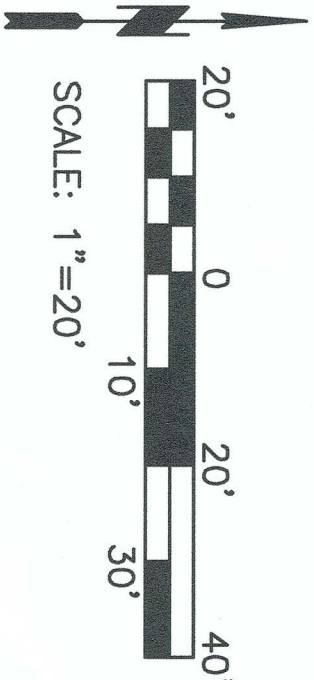
- 1 GRIND OIL PATCH AREAS AS SHOWN ON C1.0. LEAVE AREAS EXPOSED FOR UP TO 5 DAYS FOR INSPECTION BY ENGINEER PRIOR TO OVERLAY PLACEMENT
- 2 AFTER INITIAL GRIND, REMOVE AND EMBEDDED IN PAVEMENT
- 3 PLACE LEVELING LIFT OF ACP IF PAVEMENT SURFACE WITHIN GOUGE AREA IS LOWER THAN SURROUNDING PAVEMENT SURFACE AFTER INITIAL 3/4" GRIND
- 4 GRIND SUBBASE REPAIR AREAS TO REMOVE TOP 2-INCHES OF EXISTING SUBBASE PER DETAIL
- 5 EXTRUDED CURB
- 6 PAVEMENT EDGE
- 7 RAISE CATCH BASIN RIM TO FINISHED GRADE
- 8 PROTECT-IN-PLACE EXISTING MONITORING WELL
- 9 CONTRACTOR SHALL TAPER NEW HMA TO EXISTING ASPHALT TO PROVIDE A SMOOTH TRANSITION




LEGEND:

- 20' EXISTING GRADE
- LIMITS OF WORK
- EXTRUDED CURB (C2.2)
- SUBBASE REPAIR AREA
- 2" HMA OVERLAY (C2.2)
- OIL PATCH AREA
- PAVEMENT EDGE FILL (C2.2)

NOTES:

1. SEE SHEET C2.2 FOR HORIZONTAL CONTROL
2. CONTRACTOR SHALL PAVE UP TO ECOLOGY BLOCK WALL, SEE DETAIL 9 ON SHEET C2.2



6562 C2.0 SHEET 8 OF 10		ENVIRONMENTAL CAP REPAIRS - PARCEL 47		APPROVED: <i>Kim W. Kilgus 8/21/17</i> DIRECTOR ENG. DATE		SWK 08/17/17 CHECKED BY DATE RGC 08/17/17 PROJ. ENGR DATE			 2407 North 31st Street, Suite 100 Tacoma, Washington 98407 (253) 396-0150 Fax (253) 396-0162	 P.O. BOX 1837 TACOMA, WA 98401 (253) 383-5841		
CONT/CONS: 070542		TOWNSHIP: 21		RANGE: 03		SECTION: 36					PRINTED BY: rchandler Aug 17, 2017	
M. ID:		DAT-HRZ: AS SHOWN		VERT: PORT OF TACOMA		PORT ADDRESS: ONE SITCUM PLAZA						
PHASE: BID SET		PARCEL: 5000350470		DRAWING SCALE: AS SHOWN		TACOMA, WA 98401-1837						
SITE PLAN AREA 1												