

SCALE: 1"=40'

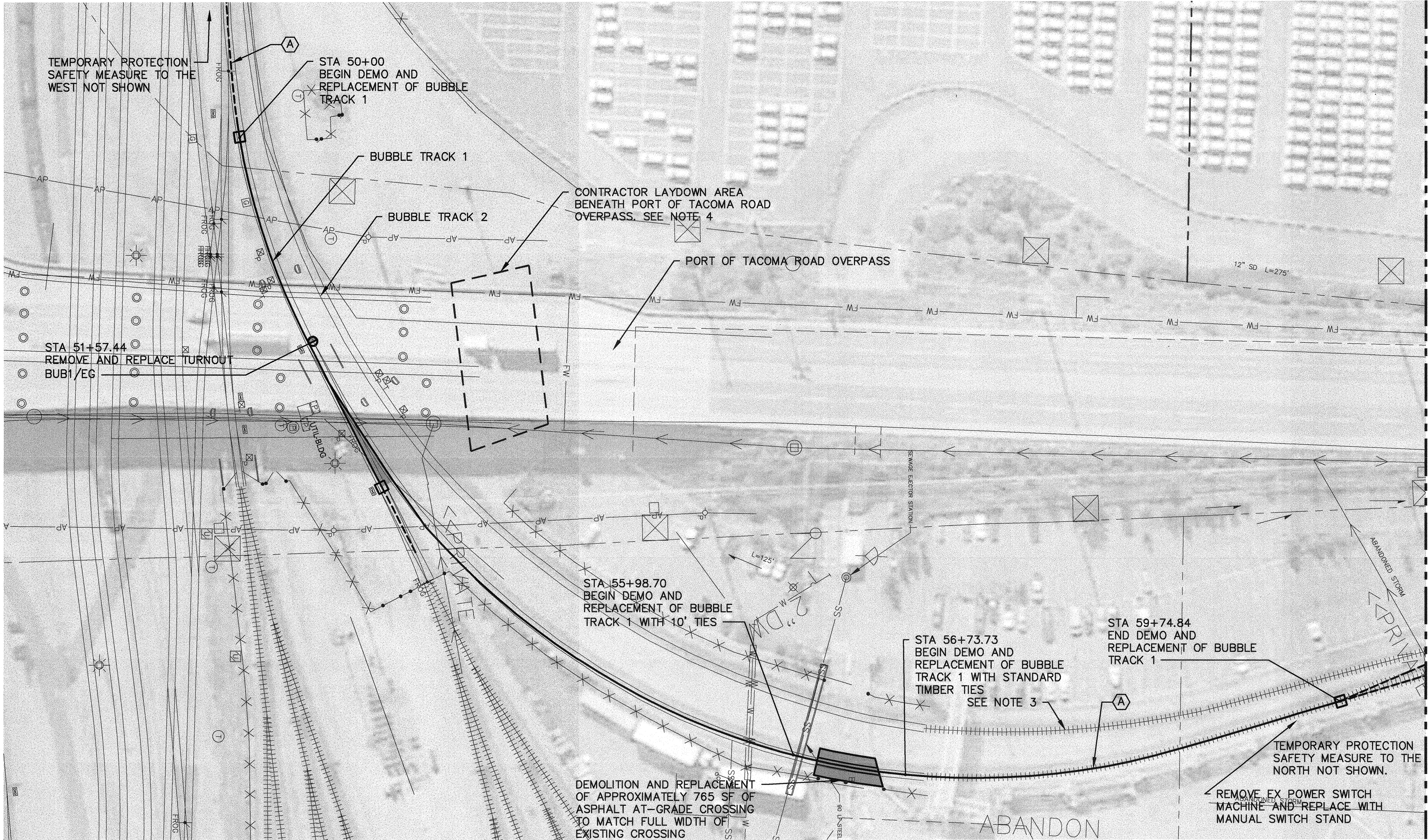
①

HMA CROSSING PAVEMENT. FOR TYPICAL SECTIONS AND LIMITS, SEE LINCOLN AVE OVERPASS WORK ORDER DRAWINGS (PERMIT NUMBER W017-0051)

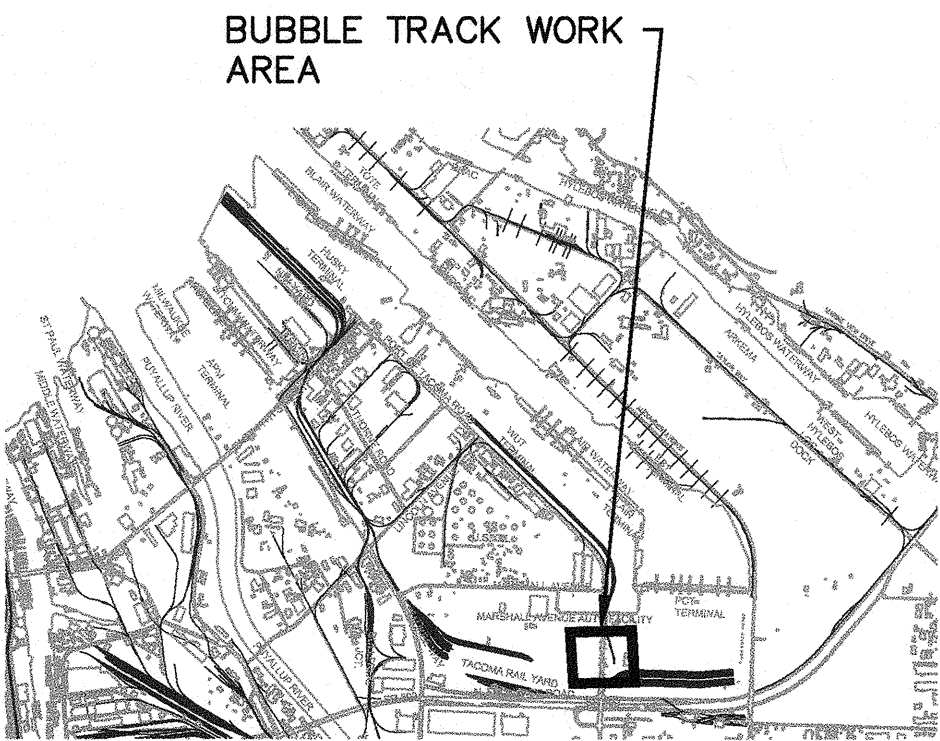
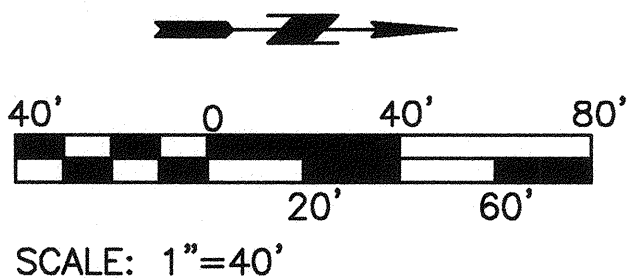
●

(A) THE SIM BYPASS TRACK MAY BE INTERRUPTED FOR UP TO (5) 12 HOUR OUTAGES EXCLUDING WEEKEND DAYS: SATURDAY AND SUNDAY FOR THE REMOVAL AND REPLACEMENT OF THE SIM BYPASS TRACK AND AT-GRADE CROSSING AND THE REPLACEMENT OF TIES ON THE SIM BYPASS TRACK. TRACKS SHALL BE RE-OPENED TO RAIL TRAFFIC AT THE END OF EACH 12 HOUR OUTAGE. INSTALL TEMPORARY PROTECTION SAFETY MEASURES APPROXIMATELY 200' BEYOND LIMITS OF TRACK WORK.





MATCHLINE STA: 60+35 BUBBLE TRACK 1 SEE SHEET G6



KEY PLAN
NTS

LEGEND :

- EXISTING RAIL, TOP OF RAIL
- REPLACEMENT OF #9 TURNOUT (1) R4-B
- SURFACE, LINE, AND DRESS TRACK, SEE SPECIFICATIONS
- REMOVE EXISTING TRACK AND INSTALL NEW TRACK, CENTERLINE (1) R7-B
- POINT OF SWITCH (PS)
- HMA CROSSING PAVEMENT. FOR TYPICAL SECTIONS AND LIMITS, SEE (A) (1) (3) R8-B R8-B R8-B
- TEMPORARY PROTECTION SAFETY MEASURE, APPROXIMATE LOCATION [LETTER DESIGNATES ASSOCIATED SEQUENCING KEYNOTE]
- COMPROMISE JOINTS

CONSTRUCTION NOTES :

- SEE SHEET R1-B AND BUBBLE TRACK 1 WORK ORDER DRAWINGS (PERMIT NUMBER W017-0050) FOR CONSTRUCTION DETAILS. SEE PROJECT REFERENCE DRAWINGS.
- THE CONTRACTOR SHALL COORDINATE THE HOUSING, STORAGE, AND MOVEMENT OF ALL ON-TRACK EQUIPMENT WITH THE PORT.
- EXISTING RAIL AT THIS LOCATION APPROXIMATED TO SUPPLEMENT AVAILABLE GIS RECORDS AND FIELD SURVEY.
- CONTRACTOR LAYDOWN AREA SHOWN AVAILABLE FOR WORK ON BUBBLE TRACK 1 (THIS SHEET), AND BUBBLE TRACK 2 (G6). LAYDOWN AREA MUST BE OFFSET MINIMUM 15' FROM CENTERLINE OF ACTIVE TRACKS
- ALL TRACKS, NOT OTHERWISE APPROVED FOR AN OUTAGE, SEE SPECIFICATIONS, SHALL BE CONSIDERED ACTIVE WITH DAILY MOVEMENTS. THE CONTRACTOR SHALL NOT INTERRUPT OPERATIONS ON ACTIVE TRACKS WITHOUT PORT, TACOMA RAIL, AND PACIFIC RAIL SERVICES APPROVAL.

SEQUENCING KEYNOTES :

- (A) BUBBLE TRACK 1 MAY BE INTERRUPTED FOR UP TO (2) 3 CONSECUTIVE DAY OUTAGES FOR THE REMOVAL AND REPLACEMENT OF TURNOUT BUB1/EG AND BUBBLE TRACK 1. BUBBLE TRACK 1 SHALL BE REOPENED TO RAIL TRAFFIC BETWEEN EACH 3 DAY OUTAGE. INSTALL TEMPORARY PROTECTION SAFETY MEASURE APPROXIMATELY 200' BEYOND LIMITS OF TRACK WORK.

Port of Tacoma
P.O. BOX 1807 TACOMA, WA 98401 (206)333-3841

2407 North 31st Street, Suite 100
Tacoma, Washington 98407
(253) 396-0150 Fax (253) 396-0162

RLO	06/14/2017	CHECKED BY	DATE	SWK	06/14/2017	DATE
PROJ. ENGR	DATE	PRINTED BY:	mmedley Jun 20, 2017	PORT ADDRESS: ONE SITCUM PLAZA	TACOMA, WA 98401-1837	
APPROVED:		DIRECTOR ENGR. DATE	6-20-17	PRINTED BY:	mmedley Jun 20, 2017	

REPLACEMENT OF RAILWAY TRACK AND SPECIAL TRACKWORK AT VARIOUS LOCATIONS

SEQUENCING PLAN

BUBBLE TRACK 1

TOWNSHIP: 20N

RANGE: 03E

SECTION: 2, 3

DAT-HRZ:

PARCEL: MULTIPLE

DRAWING SCALE: AS NOTED

6569

G5

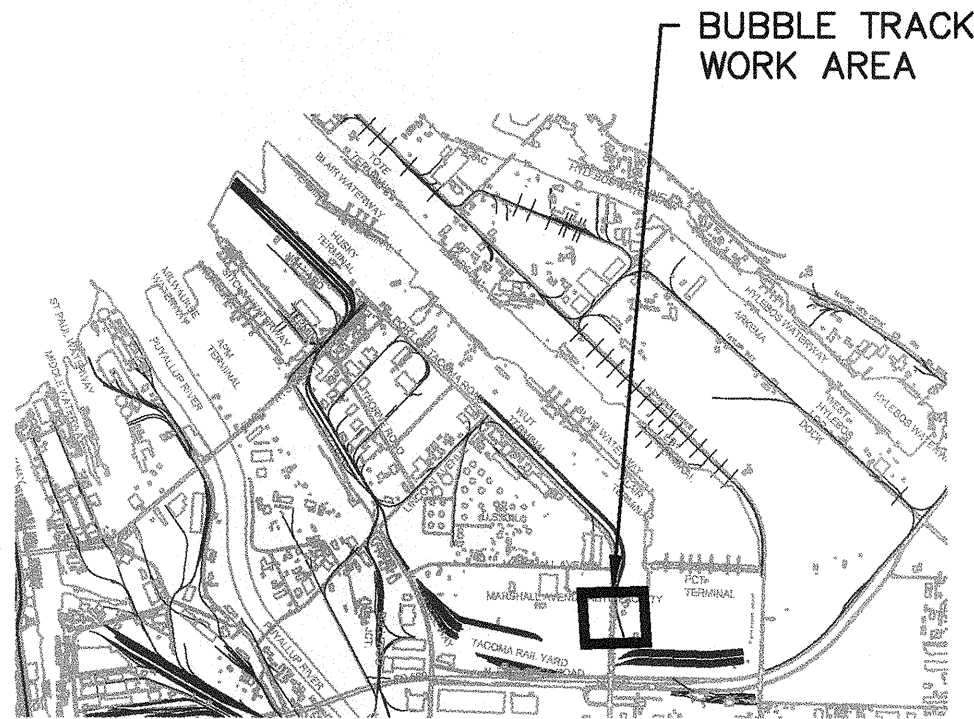
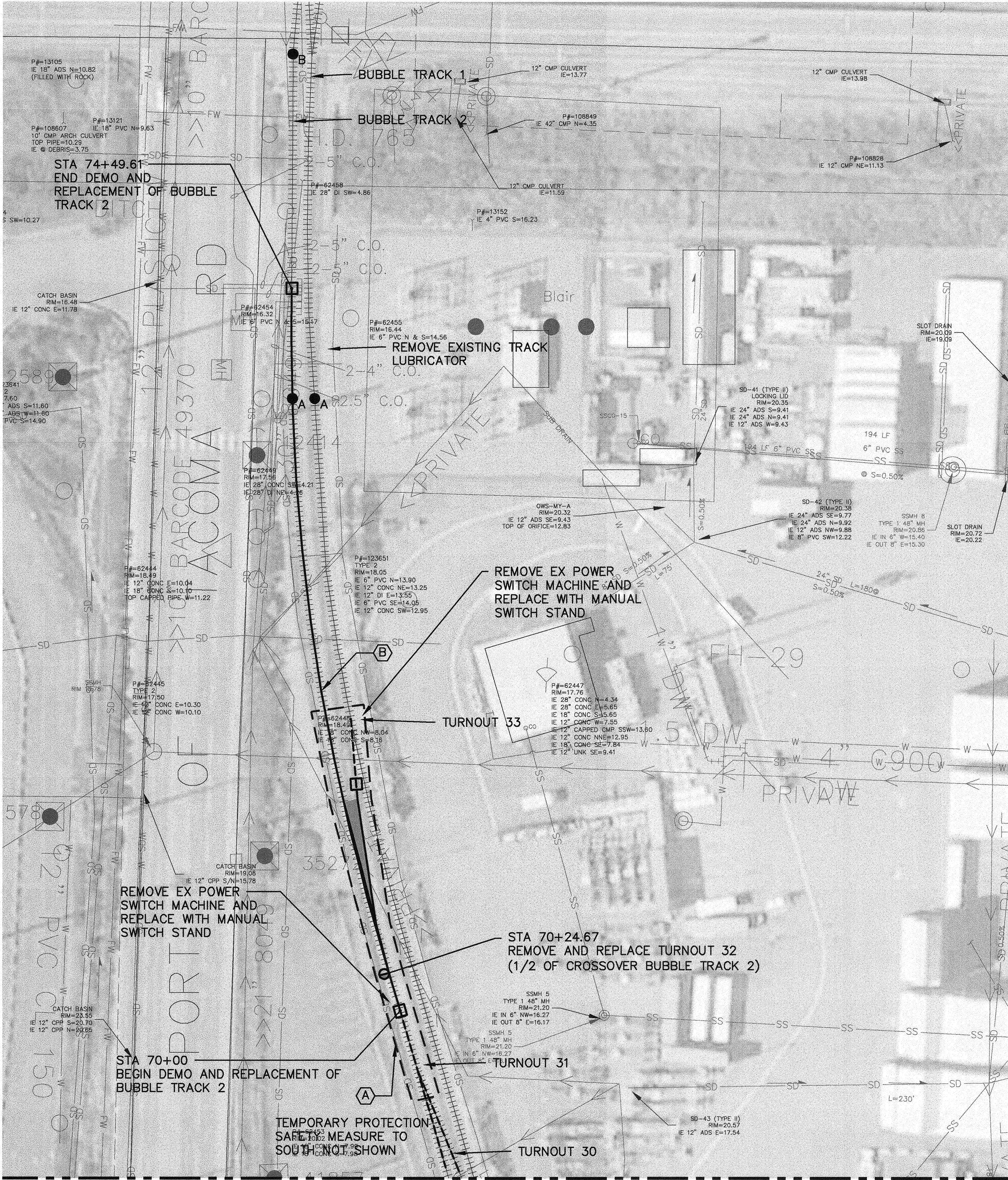
SHEET 5 OF 22

CON/CONS: 070531

M. ID: 101081.01

PHASE: BID

THIS DRAWING IS THE PROPERTY OF THE PORT OF TACOMA AND SHALL NOT BE USED ON OTHER WORK, DISCLOSED, COPIED, IN WHOLE OR IN PART, WITHOUT WRITTEN PERMISSION



KEY PLAN
NTS

CONSTRUCTION NOTES :

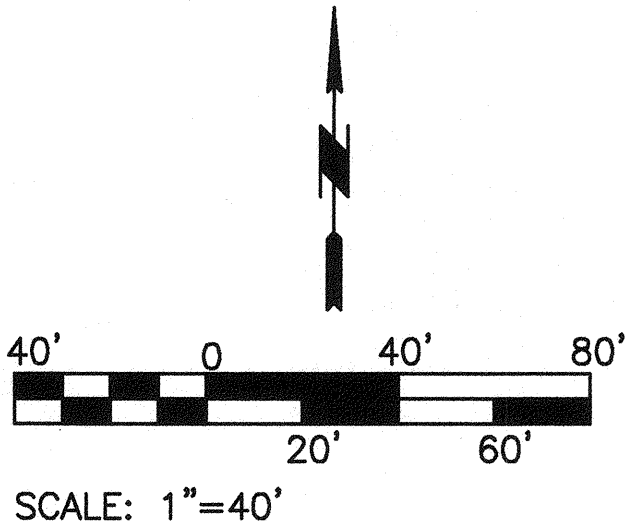
1. SEE SHEET R2-B FOR CONSTRUCTION DETAILS.
2. THE CONTRACTOR SHALL COORDINATE THE HOUSING, STORAGE, AND MOVEMENT OF ALL ON-TRACK EQUIPMENT WITH THE PORT.
3. CONTRACTOR LAYDOWN AREA FOR WORK ON BUBBLE TRACK 2 SHOWN ON SHEET G5, UNDER PORT OF TACOMA ROAD OVERPASS. LAYDOWN AREA MUST BE OFFSET MINIMUM 15' FROM CENTERLINE OF ACTIVE TRACKS.
4. ALL TRACKS, NOT OTHERWISE APPROVED FOR AN OUTAGE, SEE SPECIFICATIONS, SHALL BE CONSIDERED ACTIVE WITH DAILY MOVEMENTS. THE CONTRACTOR SHALL NOT INTERRUPT OPERATIONS ON ACTIVE TRACKS WITHOUT PORT, TACOMA RAIL, AND PACIFIC RAIL SERVICES APPROVAL.

SEQUENCING KEYNOTES :

- (A) BUBBLE TRACK 2 MAY BE INTERRUPTED FOR UP TO A 12 HOUR OUTAGE FOR THE REMOVAL AND REPLACEMENT OF TURNOUT 32. BUBBLE TRACK 1 MAY BE INTERRUPTED FOR UP TO A 6 HOUR OUTAGE FOR THE REMOVAL AND REPLACEMENT OF TURNOUT 32. INSTALL TEMPORARY PROTECTION SAFETY MEASURES APPROXIMATELY 200' BEYOND LIMITS OF TRACK WORK.
- (B) BUBBLE TRACK 2 MAY BE INTERRUPTED FOR UP TO (2) 12 HOUR OUTAGES FOR THE REMOVAL AND REPLACEMENT OF THE REMAINDER OF THE BUBBLE TRACK 2 NOT INCLUDED IN KEYNOTE A. BUBBLE TRACK 2 OUTAGES MAY OR MAY NOT BE CONSECUTIVE. THE BUBBLE TRACK 2 SHALL BE RE-OPENED TO RAIL TRAFFIC BETWEEN EACH OUTAGE. INSTALL TEMPORARY PROTECTION SAFETY MEASURE APPROXIMATELY 200' BEYOND LIMITS OF TRACK WORK TO THE NORTH AND LOCKOUT TURNOUT 32.

LEGEND :

- EXISTING RAIL, TOP OF RAIL
- REPLACEMENT OF #9 CROSSOVER R8-B
- SURFACE, LINE, AND DRESS TRACK, SEE SPECIFICATIONS
- REMOVE EXISTING TRACK AND INSTALL NEW TRACK, CENTERLINE R7-B
- POINT OF SWITCH (PS)
- HMA CROSSING PAVEMENT. FOR TYPICAL SECTIONS AND LIMITS, SEE A R8-B, 1 R8-B, 3 R8-B
- TEMPORARY PROTECTION SAFETY MEASURE APPROXIMATE LOCATION [LETTER DESIGNATES ASSOCIATED SEQUENCING KEYNOTE]
- COMPROMISE JOINTS



6569

G6

SHEET 6 OF 22

CON/CONS: 070531
M. ID: 101081.01
PHASE: BID

REPLACEMENT OF RAILWAY TRACK AND
SPECIAL TRACKWORK AT VARIOUS LOCATIONS

SEQUENCING PLAN
BUBBLE TRACK 2

APPROVED: *Don Vandenberg*

6-20-17

DIRECTOR ENGR. DATE

PRINTED BY: mmedley jun 20, 2017

PORT ADDRESS: ONE SITCUM PLAZA
TACOMA, WA 98401-1837

RLO 06/14/2017
CHECKED BY DATE

SWK 06/14/2017
PROJ. ENGR DATE

SECTION: 2, 3
RANGE: 03E
DATE-HRZ:
PARCEL: MULTIPLE

SECTION: 2, 3
RANGE: 03E
DATE-HRZ:
PARCEL: MULTIPLE

SECTION: 2, 3
RANGE: 03E
DATE-HRZ:
PARCEL: MULTIPLE

Port of Tacoma
2407 North 31st Street, Suite 100
Tacoma, Washington 98407
(253) 396-0150 Fax (253) 396-0162

kpff

MADE IN WASHINGTON
REGISTERED PROFESSIONAL
ENGINEER
No. 14717
Exp. 12/31/17

MARK: REVISION:
BY: APPR: DATE: