

PROJECT TITLE: Terminal 3 & Terminal 4 Shore Power Project
201100.01

PROJECT NO.:

SUBMITTED BY: Access Electric Supply

CONTRACT NO.: 071357

PRIME/SUB/SUPPLIER: Supplier

DATE: 3/3/2022

Specification Title: Medium Voltage Shore Power Walk-In

Section No.: 337700

Description: 15kV Shore Power Switches Enclosure

Paragraph: 1.01 - 2.16

15kV Switchgear

Page No.: 1-11

Metal Enclosure Shore Power Load Break Switches

Proposed Substitution: Myers Power Products - Total Integrated Walk-In Enclosure with All Equipment

Trade Name: Myers Power

Model No.: _____

Manufacturer: Myers Power Products

Address: 2950 E. Philadelphia St, Ontario CA 91761

Phone No.: (951)520-1900

Installer: _____

Address: _____

Phone No.: _____

Differences between proposed substitution and specified product: Myers manufactures our own MV arc resistant metal-clad switchgear using Eaton circuit breakers. Myers manufactures our own MV metal-enclosed switchgear using the approved switch manufacturers listed in 2.09.

☐ Point-by-Point comparative data attached - REQUIRED

Reason for not providing specified item: Myers provides the ability to have all equipment, including the walk-in enclosure, fabricated at the same facility and will greatly improve job coordination.

Similar Installation:

Project: WUT Berth Extension Crane Power Mods

A/E: Cross Engineers

Address: Port of Tacoma Way

Owner: Washington United Terminals

Date Installed: 2009

Proposed substitution affects other parts of Work: ☒ No ☐ Yes; explain _____

Supporting Data Attached:

☐ Drawings ☒ Product Data ☐ Samples ☐ Tests ☐ Reports ☐ Other: _____

Applicable to Substitution Requests During Construction:

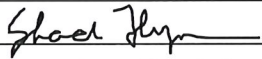
Proposed to Port for accepting substitution: \$ _____

Proposed substitution changes Contract Time: ☐ No ☐ Yes [Add] [Deduct] _____ # days.

The Undersigned certifies:

- Proposed substitution has been fully investigated and determined to be equal or superior in all respects to specified product.

- Same warranty will be furnished for proposed substitution as for specified product.
- Same maintenance service and source of replacement parts, as applicable, is available.
- Proposed substitution will have no adverse effect on other trades and will not affect or delay Baseline Project Schedule.
- Cost data as stated above is complete. Claims for additional costs related to accepted substitution which may subsequently become apparent are to be waived.
- Proposed substitution does not affect dimensions and functional clearances.
- Payment will be made for changes to building design, including A/E design, detailing, and construction costs caused by the substitution.
- Coordination, installation, and changes in the Work as necessary for accepted substitution will be complete in all respects.

Submitted By: Shad Flynn
Signed By:  Firm: Access Electric Supply
Address: 235 Airport Way S, Renton, WA
Telephone: 425-988-6206 Email: shad@ae-supply.com
Attachments: Myers MV Products Info; UL Listed LIS brochure;
Power Distribution Centers; Intellsage Fact Sheet (Arc Resistant Gear)

A/E's REVIEW AND RECOMMENDATION

- ☐ Approved Substitution
☐ Approved Substitution as Noted
☒ Reject Substitution - Use specified materials.
☐ Substitution Request received too late - Use specified materials.

Signed by:  Date: 3/14/2022

ENGINEER'S REVIEW AND ACTION

- ☐ Substitution Approved - Make submittals in accordance with this Specification Section. If during construction, prepare Change Order.
☐ Substitution Approved as Noted - Make submittals in accordance with this Specification Section. If during construction, prepare Change Order.
☒ Substitution Rejected - Use specified materials.
☐ Substitution Request received too late - Use specified materials.

Signed by:  Date: _____

END OF SECTION



MEDIUM VOLTAGE PRODUCTS



ANYTHING IS POSSIBLE WITH MYERS POWER PRODUCTS



PROTECT

Protect your equipment and personnel from the elements and unforeseen electrical events with Myers Medium Voltage Products & Solutions. Our ArcRes Switchgear provides unparalleled protection for your personnel, while our MetalClad solutions such as Medium Voltage Vacuum Circuit Breakers and Protective Relay Systems protect your equipment.

DISTRIBUTE

When you partner with Myers Power Products, you have more options for switchgear, enclosures & housings, configurations, and protection solutions than any other manufacturer in the market today. Our Medium Voltage Switchgear provides you with flexible options for integrating Myers' products with all Major OEM's to deliver best in class electrical distribution solutions. Our switchgear products and solutions are available in both AC and DC Voltages, or in combination in a single solution.

CONTROL

Myers Power Products provides a wide range of options for Protective Relay Systems, Control Switchboards, SCADA systems, protection and operation schemes, and safety hazard mitigation. From simple automatic transfer schemes, to complex paralleling systems, or arc flash mitigation; Myers Medium Voltage Solutions can be designed and delivered to meet your distinctive requirements.

MYERS MEDIUM VOLTAGE PRODUCTS & SOLUTIONS

Whether you need 5kV, 15kV, 27kV or 38kV distribution switchgear; for indoor or outdoor applications, Myers Power Products has a solution. Myers has been and continues to be a leader in the manufacturing and design of Medium Voltage Switchgear for more than 40 years and offers a wide range of Medium Voltage distribution equipment including Metal Clad, Metal Enclosed and Arc Resistant switchgear, power distribution centers, motor control centers, protective relay systems, non-segregated bus duct and circuit breakers. Whatever your requirement, Myers has a design to meet your needs. Myers' own best-in-class products can be integrated with multiple 3rd party manufactures to bring you the most versatile and customizable solutions available in

the market today; from simple indoor switchgear assemblies to stand-alone outdoor NEMA 3R equipment, to complex integrated Power Distribution Centers (PDC), Myers Power Products has the expertise to design, fabricate, test, install and commission our products to meet your specifications.

Myers Medium Voltage solutions are custom designed by our highly experienced in-house engineering team - whether your project is greenfield or brownfield, simple or complex, domestic or international; you can count on myers power products for reliability, durability and flexibility. With Myers, anything is possible!

METALCLAD SWITCHGEAR

5 kV - 38 kV
AC VOLTAGE
RATINGS

600 A - 4000 A
AC CURRENT RATINGS
(CONTINUOUS)

600 A - 12,000 A
DC CURRENT RATINGS
(CONTINUOUS)



Myers MetalClad Switchgear is available in multiple NEMA rated enclosures, including Indoor, Outdoor Walk-in (ODWI) and Outdoor Non-Walk-in (ODNWI) and can be provided as a stand-alone lineup, enclosed in a walk-in structure, integrated into a Power Distribution Center (PDC), or any other custom enclosure you may require. Whether you need a solution for power distribution, motor control, protection & control systems, or other customized application, Myers has you covered. GIS switchgear options provide for an inherently arc resistant design with a reduced footprint – consult a Myers engineer for additional information.

METAL ENCLOSED SWITCHGEAR

5 kV - 38 kV
AC VOLTAGE
RATINGS

600 A - 4000 A
AC CURRENT RATINGS
(CONTINUOUS)

40 kV - 60 kV
SHORT CIRCUIT
RATINGS



Myers Power Products manufactures Metal Enclosed Switchgear for applications where MetalClad Switchgear is not required. Our Metal Enclosed Switchgear is available in multiple NEMA enclosures as stand-alone switchgear, part of a unit substation, or other customized design configurations. Myers Metal Enclosed Load Interrupters and Disconnect Switches offer you the choice between manually and electrically operated mechanisms in fused or non-fused applications.



UNIT SUBSTATIONS

480 V - 38 kV
AC VOLTAGE
RATINGS

201.1982
NEMA COMPLIANT

100-1977
IEEE COMPLIANT



Myers' integrated unit substations are custom designed to meet your specifications and are close coupled, consisting of enclosed primary medium voltage equipment, a 3-phase power transformer (up to 5MVA), and enclosed secondary MV or LV equipment. Transformers are supplied to meet your requirements and include liquid filled, dry type, high fire point oil or silicon, vacuum pressure impregnated coil, or cast coil. Myers can design Unit Substations for nearly any application, including indoor, outdoor, skid-mounted, integrated in a PDC, and wheeled mobile configurations. Myers Power Products Skid-Mounted Substations are manufactured per NEMA201-1982 and IEEE 100-1977 standards.

ARC RESISTANT SWITCHGEAR

480 V - 38 kV
AC VOLTAGE
RATINGS

**TYPE 2, 2B,
2C, 2BC**
CONSTRUCTION

**C37.20.2 &
C37.20.7**
ANSI STANDARDS



Myers Power Products ArcRes Switchgear is designed to protect your personnel and equipment from the destructive energy and force of an arc flash incident. Our ArcRes Switchgear utilizes specially designed ducting to safely exhaust any arc flash incidents out of the area and away from your personnel and equipment. ArcRes Medium Voltage Switchgear is designed with vacuum circuit breaker and metal clad switchgear technology for voltage ratings between 5 kV and 15 kV and a GIS design is available for voltage ratings above 15kV.



EQUIPMENT & ENCLOSURE OPTIONS

Myers can design, manufacture, and deliver an unlimited range of options for medium voltage electrical equipment and control in various applications and enclosure types.

Power & Control Equipment

- AC MV Switchgear, 5kV – 38kV
- Motor Starters
- Protective Relay Panels
- Unit Substations
- DC switchgear, 250 V – 1600 VDC
- SCADA equipment

Enclosures

- Indoor NEMA 1
- Outdoor NEMA 3R
- Other NEMA Ratings
- Outdoor Myers PDC
- ArcRes Arc Resistant Type 2, 2B, 2C, & 2BC

Special Design Features

- Seismic Ratings
- Skid Mount Option
- Arc Resistant Design

MYERS CIRCUIT BREAKERS

Myers Power Products is a leading manufacturer for Medium Voltage Vacuum Circuit Breakers. Our HVF AC Circuit Breakers and FBK DC Circuit Breakers are available with or without Myer's High Speed Tripping to provide you with flexibility in managing system coordination while incorporating personnel safety and downstream equipment protection. Whether you require fixed mount or draw-out type circuit breakers, Myers Power Products is the solution for your specific application.

HVF AC Circuit Breakers

- 5 kV – 38 kV Voltage Ratings
- 600 A – 4000 A Continuous Current Ratings
- 16 kA – 63 kA Interrupting Rating
- 2-Cycle Trip (optional)

FBK DC Circuit Breakers

- 300 VDC – 1000 VDC Voltage Ratings
- 1600 A – 12,000 A Continuous Current Ratings
- 60 kA – 200 kA Short Circuit Rating

PROTECTIVE RELAY PANELS 5 KV - 500 KV PROTECTION

Myers Power Products Protective Relay Panels and Custom Control Switchboards are engineered-to-order to meet your requirements for improved reliability, protection, and a higher level of communication & control for your power system. Our designs meet ANSI C37.21 for Control Switchboards with IEEE-693 racking designs for seismic qualifications.

Design Options

- Custom Control Panelboard
- Integrated into PDC
- Door & Wiring Harness
- Simplex
- Full Duplex
- Half Duplex
- Fixed & Swing Rack Cabinets
- Control Desk

BUS DUCT

Myers Power Products Non-segregated Bus Duct is available for AC and DC applications. Since each project is engineered to order, Myers Bus Duct offers you several options for construction, voltage & current ratings, and configuration. A combination of our in-house epoxy coating system (standard) or insulated sleeving (optional) is used to insulate the current carrying surfaces, and bus supports can be provided in glastic, porcelain, or cycloaliphatic materials. Our Bus Duct is available for indoor and outdoor applications; and the NEMA 3R design includes strip heaters with weather tight removable cover plates. Custom design and UL Field Labeling is available to meet your specific requirements.

Construction

- Aluminum or Copper bus
- Silver or Tin plated connections
- Epoxy Coating

AC Bus Duct

- 480 V – 38 kV
- 4,000 A Max

DC Bus Duct

- 250 VDC – 1600 VDC
- 15,000 A Max

UL DESIGNS

Myers Power Products' standard electrical equipment is backed by over 30 UL files for over 50 different products and designs. Our Medium Voltage Products & Solutions carry standard UL files but can be individually UL or 3rd party UL labeled for new designs as required.

Common applicable medium voltage standards for which Myers has associated UL files are:

ANSI C37 – Medium Voltage Circuit Breakers

- Myers Controlled Power (5kV-38kV)
- Eaton
- ABB
- Schneider Electric
- General Electric
- Siemens

Load Interrupter and Isolation Switches Over 600V

- Schneider Electric
- Eaton
- ABB

FACTORY TESTING & FIELD SERVICE

Achieve peace of mind in knowing that your medium voltage electrical solutions are fully functioning as designed, both at the factory and in the field.

Factory Testing

- ANSI C37.20 Production Test
- Current Injection
- CT Ratio and Polarity
- Mechanical Operation
- Dielectric Test
- Sequence Test
- Additional Testing (optional)

Field Service

- Installation Supervision
- Start-Up Services
- Commissioning Services
- Training
- Recommended Spare Parts
- Repair & Replacement
- Preventive Maintenance Services

PREMIUM PRODUCTS COME WITH PREMIUM SUPPORT.

Myers Power Products is committed to delivering the best products with the best product support throughout North America. Our pursuit of excellence continues long after our products are delivered and placed into service.

OUR NORTH AMERICAN NETWORK IS QUALITY DRIVEN:

- Myers Power Products customer support system - with locations in California, Ohio, and Pennsylvania, Myers provides live assistance from a dedicated staff of professional representatives for before and after service support, for engineering support, for quality replacement parts, and for premium hands-on field service support for all of Myers' equipment. Peace of mind, guaranteed
- Myers' network of premium sales representatives and distributors located throughout North America are highly trained to assist you; providing you a one-stop-shop for acquisition, maintenance, and warranty services now and well into the future.



- Corporate Locations
- Medium Voltage
- Low Voltage
- Myers Ryco
- Myers Pedestals
- Pacific Utility Products
- Lighting

ELECTRICAL RATING	MEDIUM VOLTAGE CIRCUIT BREAKERS		
	5 kV Switchgear	15 kV Switchgear	27 kV Switchgear
170 kV BIL	S	N/A	N/A
1200 A Continuous	A	A	A
2000 A Continuous	A	A	A
2500 A Continuous	A	A	A
3000 A Continuous	A	A	A
4000 A Continuous	N/A	A	A
6000 A Continuous	N/A	A	A
8000 A Continuous	N/A	A	A
10,000 A Continuous	N/A	A	A
12,000 A Continuous	N/A	A	A
31.5 kA Interrupting	A	N/A	N/A
40 kA Interrupting	A	N/A	N/A
44 kA Interrupting	A*	N/A	N/A
60 kA Short Circuit	N/A	A	A
80 kA Short Circuit	N/A	A	A
96 kA Short Circuit	N/A	A	A
100 kA Short Circuit	N/A	A	A
120 kA Short Circuit	N/A	A	A
132 kA Short Circuit	N/A	A	A
158 kA Short Circuit	N/A	A	A
200 kA Short Circuit	N/A	A	A
TRIP TIME			
2 Cycle	A	N/A	N/A
3 Cycle	A	N/A	N/A
5 Cycle	S	N/A	N/A
Semi High-Speed	N/A	S	S
High-Speed	N/A	S	A
UL LABEL			
MV Circuit Breakers	N/A	N/A	N/A

* Available at 27 kV Operating Voltage Only



	MEDIUM VOLTAGE EQUIPMENT						
	5 kV Switchgear	15 kV Switchgear	27 kV Switchgear	38 kV Switchgear	DC Switchgear	Protective Relay Panels	Bus Duct
CONSTRUCTION							
NEMA 1	S	S	S	S	S	S	S
NEMA 3R	A	A	A	A	A	A	A
Other NEMA	A	A	A	A	A	A	A
PDC Integrated	A	A	A	A	A	A	A
11-14 Gauge Cold Rolled Steel	S	S	S	S	S	S	S
11-14 Gauge Galvanneal	A	A	A	A	A	A	A
304/316L Stainless Steel	A	A	A	A	A	A	A
Marine Grade Aluminum Type 5052	A	A	A	A	A	A	A
18 in Wide Cells	N/A	N/A	N/A	N/A	S	A	N/A
24 in Wide Cells	N/A	N/A	N/A	N/A	S	A	N/A
36 in Wide Cells	S	S	S	N/A	N/A	A	N/A
42 in Wide Cells	N/A	N/A	N/A	S	N/A	A	N/A
Copper Bus	S	S	S	S	S	N/A	S
Aluminum Bus	A	A	A	A	A	N/A	A
FINISH							
Electrostatic Power Coat ANSI Grey 70	S	S	S	S	S	S	S
Electrostatic Power Coat ANSI Grey 61	S	S	S	S	S	S	S
Custom Color	A	A	A	A	A	A	A
HVLP Wet Spray	A	A	A	A	A	A	A
Anti-Graffiti Finish	A	A	A	A	A	A	A
7000 Hour Salt Spray	A	A	A	A	A	A	A
ELECTRICAL RATINGS							
60 kV BIL	S	N/A	N/A	N/A	N/A	N/A	N/A
95 kV BIL	N/A	S	N/A	N/A	N/A	N/A	N/A
125 kV BIL	N/A	N/A	S	N/A	N/A	N/A	N/A
150 kV BIL	N/A	N/A	N/A	S	N/A	N/A	N/A
600 A Continuous	A	A	A	A	A	N/A	A
1200 A Continuous	A	A	A	A	A	N/A	A
1600 A Continuous	N/A	N/A	N/A	N/A	A	N/A	A
2000 A Continuous	A	A	A	A	A	N/A	A
3000 A Continuous	A	A	N/A	A	A	N/A	A
4000 A Continuous	A	A	N/A	N/A	A	N/A	A
6000 A Continuous	N/A	N/A	N/A	N/A	A	N/A	A
8000 A Continuous	N/A	N/A	N/A	N/A	A	N/A	A
10,000 A Continuous	N/A	N/A	N/A	N/A	A	N/A	A
12,000 A Continuous	N/A	N/A	N/A	N/A	A	N/A	A
15,000 A Continuous	N/A	N/A	N/A	N/A	A	N/A	A
ELECTRICAL EQUIPMENT							
Circuit Breakers & Motor Control	Myers, Schneider Electric, Eaton, ABB, GE, Siemens						
Protective Relays	Schweitzer, ABB, Schneider Electric, Basler, GE						N/A
Load Interrupter & Disconnect Switch	Schneider Electric, Eaton, ABB						
UL LABEL							
PDC Structure	A	A	A	A	A	A	A
MV Switchgear	A	A	A	A	A	A	A



MYERS POWER PRODUCTS

For more than 60 years, Myers Power Products has been and continues to be, a global leader in the supply and integration of a wide range of electrical products. As both a manufacturer and systems integrator, we are trusted by thousands of companies worldwide to provide solutions ranging from medium voltage AC and DC power distribution switchgear and equipment, custom designed enclosures & power distribution centers, low voltage switchboards and panelboards to emergency lighting inverters, backup power systems and electrical service pedestals.

With manufacturing facilities throughout North America, Myers Power Products is uniquely positioned to serve you with the quality solutions you desire for your electrical distribution needs. Our in-house design support, engineering, fabrication, assembly and integration processes provide the expertise and flexibility to deliver both standard and customized, engineered-to-order solutions in a timely and professional manner; giving you the peace of mind that your project will be completed on-time and to specification, regardless of complexity.

Once your product is on site, our highly trained Field Service Team is ready and available when you need them. Myers' expert technicians can handle any need, ranging from start-up and commissioning to training on new equipment or troubleshooting, repair, and maintenance on installed equipment.

Spare Parts and Service Contracts are also available to provide you with the peace of mind that your equipment will continue to operate safely and optimally well into the future.

RELIABILITY, DEPENDABILITY, FLEXIBILITY...TRUST IN THE POWER OF MYERS!

Myers Power Products has made every reasonable effort to ensure that the information contained in this brochure is accurate. However, we accept no responsibility for any errors or omissions. We reserve the right to modify designs, characteristics and products at any time for any reason or no reason with or without notice.

© Myers Power Products inc. 2014. - Printed in USA



Myers Power Products

2950 East Philadelphia Street, Ontario, CA 91761
Toll Free: 866-MY-MYERS
Main: 909-923-1800
Fax: 909-923-1806
info@myerspower.com
www.myerspowerproducts.com



POWER DISTRIBUTION CENTERS (PDC'S)



ANYTHING IS POSSIBLE WITH MYERS POWER PRODUCTS



PROTECT

Protect your electrical equipment and assets from the elements with a PDC from Myers Power Products. Whether you need a Standard PDC, our Artic Design for extreme cold, a High-Wind Design for defense against hurricanes, a Blast Resistant PDC to protect both personnel and equipment from an external blast, or other special requirement - the Myers team has a solution and a design to suit your needs. As an added benefit, all Myers PDCs are seismic zone 4 rated, standard.

DISTRIBUTE

The Myers PDC provides you the flexibility to integrate Myers Power equipment with all Major OEM products to deliver best in class electrical distribution solutions. Our PDC's are available in AC or DC, Low or Medium Voltage, or in combination with various electrical systems.

CONTROL

Myers Power Products allows you to determine how your systems will be controlled by providing a wide range of options for SCADA systems, safety hazard mitigation, and protection and operation schemes. Whether you need a simple automatic transfer scheme, a complex paralleling system, or arc flash mitigation; a Myers PDC can be designed and delivered to meet your distinctive requirements.

THE MYERS POWER DISTRIBUTION CENTER (PDC)

Whether you need a Power Distribution Center (PDC), Power Control Center (PCC), or Electrical Equipment House (E-House), Myers Power Products has the most versatile, durable, and reliable electrical housing structures available on the market today. With thousands of PDC's installed worldwide, Myers PDC's have a long history of proven performance in some of the toughest environmental conditions and technically demanding applications. The Myers PDC is available in a wide variety of metals, finishes, custom paint options, and wall, wind & roof ratings.

Each PDC is custom designed by our in-house engineering team in accordance to your unique requirements with state of the art electrical equipment and systems. Myers specializes in the manufacture and integration of both buildings and power distribution equipment; ensuring that the end product is manufactured, integrated and tested all in the same facility – providing you with a complete turnkey solution, with no compromise to the structural or electrical facets of your design...a valuable offer most other manufacturers are unable to provide.



STANDARD PDC

100 - 180 MPH
WIND SPEED

40 - 80 LB/SQFT
ROOF LOAD

22'W X 65'L
SHIPPING SPLIT



Protect your electrical equipment and assets from the elements with a PDC from Myers Power Products. The Myers Standard PDC is available with various options and configurations; whether you need an Artic Design for extreme cold, a High-Wind Design for defense against hurricanes, or other special requirements - the Myers team has a solution and a design to suit your needs. As an added benefit, all Myers PDCs are seismic zone 4 rated, standard.

BLAST RESISTANT PDC



Myers Power Products Blast Resistant PDC's offer the same integrated solutions as our Standard PDC, but with added blast resistant features that allow for increased personnel safety and equipment protection in the event of an external blast, for continuous operation of critical processes and operations with minimal downtime. Blast Resistant PDC's also facilitate compliance of API RP 752 – *Management of Hazards Associated with Location of Process Plant Buildings*. Each Blast Resistant PDC is uniquely designed to meet your specific structural and electrical requirements, from required blast resistant PSI rating to beam and wall thickness.

1 - 17 PSI*
BLAST
RESISTANCE

1 FT*
I-BEAM
CONSTRUCTION

ETO*
OUTER SKIN
THICKNESS
(TYPICAL 1-IN)

*ETO – Engineered to Order

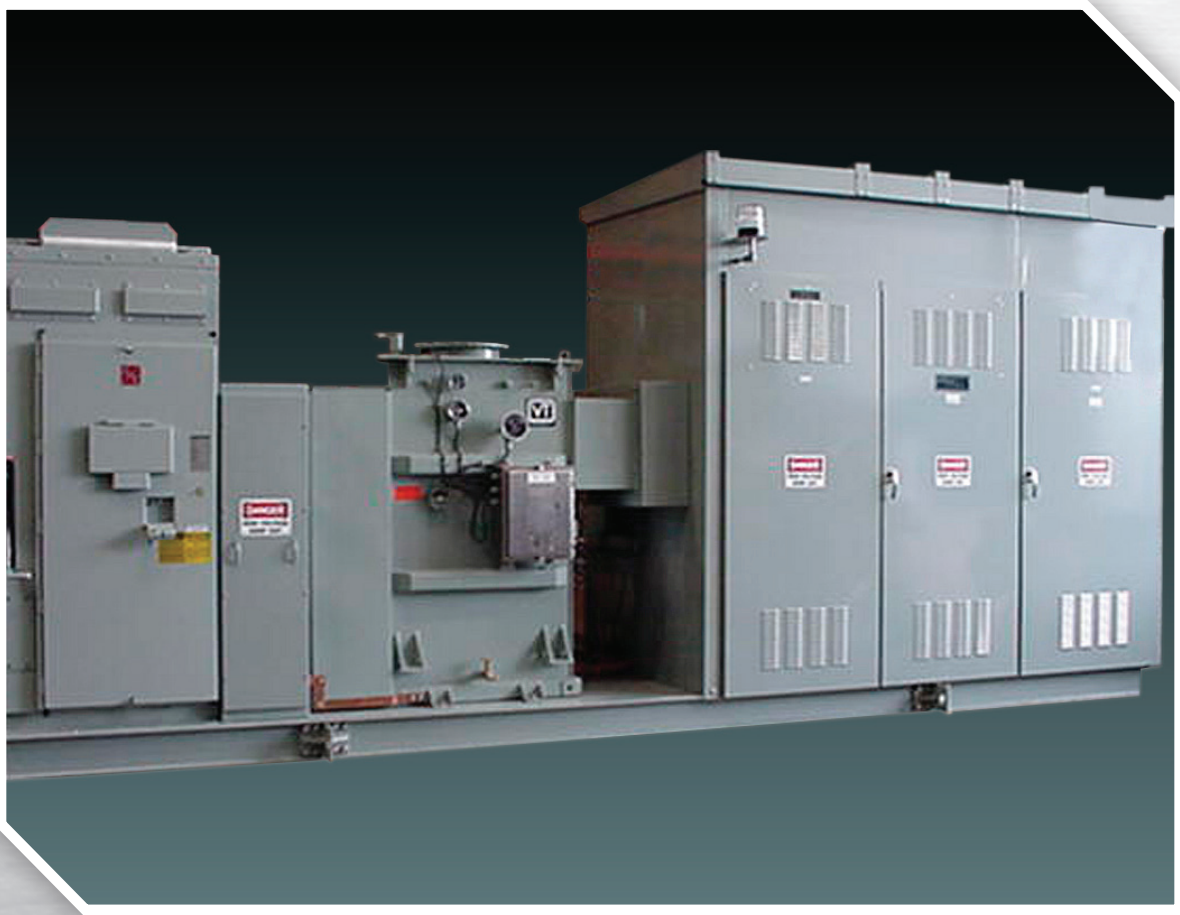


SKID MOUNTED PDC

480 V - 38 kV
UNIT SUBSTATIONS
MINING SKIDS

1.0 - 2.0 MW
SOLAR INVERTER
SKIDS

480 V - 5 kV
MOTOR CONTROL
SKIDS



Combine the rugged versatility of a Myers Power Products PDC with the convenience and mobility of a skid based mounting system. Our Skid-Based solutions are available for common applications, such as Integrated Unit Substations, Solar Inverters and Mining Skids, to more custom based solutions that fit your specific requirements. Myers Power Products Skids are available in open or enclosed design with the unique ability to integrate numerous options from 3rd party equipment manufacturers into each delivered solution.

ARC RESISTANT PDC



Myers Power Products ArcRes PDC's are designed to protect your personnel and equipment from the destructive energy and force of an arc flash incident. Our ArcRes PDC is based upon our Standard PDC design, but incorporates Myers Power Products ArcRes Switchgear and necessary venting to safely exhaust any arc flash incidents out of the PDC and away from your personnel and equipment. Also available in GIS for voltage ratings above 15kV.

480 V - 38 kV
VOLTAGE RATINGS

**TYPE 2, 2B,
2C, 2BC**
CONSTRUCTION

**C37.20.2 &
C37.20.7**
ANSI STANDARDS



ELECTRICAL EQUIPMENT OPTIONS

Myers PDC's can accommodate an unlimited range of options for electrical equipment integration and control.

Examples of some common solutions are:

- AC MV Switchgear, 5kV – 38kV
- AC LV Switchgear, 480V – 600V
- 480V – 5kV Motor Control Centers
- Protective Relay Panels
- Unit Substations
- DC switchgear, 250 VDC – 1600 VDC
- Power Rectifiers
- Battery Systems
- UPS Equipment
- Panelboards & Switchboards
- SCADA equipment

UL DESIGNS

Myers Power Products standard electrical equipment is backed by over 30 UL files for over 50 different products and designs. Our PDC's can be individually UL or 3rd Party UL labeled upon request for each project. CSA labeling is also available upon request. Common applicable standards for which Myers has associated UL files are:

ANSI C37 – Medium Voltage Circuit Breakers

- Myers Controlled Power
- Eaton
- ABB
- Schneider Electric
- General Electric
- Siemens

Load Interrupter and Isolation Switches Over 600V

- Schneider Electric
- Eaton
- ABB

UL 1558 & UL 891 – Low Voltage Switchgear & Switchboard Assemblies

- ABB
- Eaton
- General Electric
- Schneider Electric
- Siemens

HOUSING CONSTRUCTION & FINISH

Myer Power Products vertically integrated structure allows you the flexibility to choose the construction type and materials that best fit your specific needs. With a multitude of metal and in-house paint options, Myers PDC's offer you more choice and flexibility than any other solution available.

- Metals (11 Gauge - 14 Gauge)
- Galvanneal (standard)
- Cold Rolled Steel (standard)
- 304/316L Stainless Steel (optional)
- Marine Grade Aluminum Type 5052 (optional)
- Finishes
 - Electrostatic Powder Coat ANSI Grey 70 (standard)
 - Custom Colors (optional)
 - Anti-Graffiti (optional)

WALL & ROOF CONSTRUCTION

All Myers Power Products PDC's are designed for optimum durability; we believe that a PDC must be robust enough to stand up to the toughest environmental conditions in order to properly protect your electrical equipment and assets. Common examples of our available wall and roofing options for the Myers PDC include:

Wall Construction

- R-13 Insulation (standard)
- R-19 through R-38 (optional)
- 100 MPH Wind Speed (standard)
- 120-180 MPH Wind Speed (optional)
- 1 Hour & 2 Hour Fire Ratings (optional)
- Bolted Interlocking Design (standard)
- Welded Panel Design (optional)

Roof Construction

- Standing Seam or Roof Cap Designs (standard)
- Cold Roof Design (option)
- R-19 Insulation (standard)
- R-38 Insulation (optional)

Special Design Features

- Seismic Zone 4/D (standard)
- Seismic E & F Ratings (optional)
- Arctic Design (optional)
- Class I, Div II Pressurized Design (optional)
- Blast Resistant Design (optional)
- Arc Resistant Design (optional)

SHIPPING & REASSEMBLY

Myers Power Products PDC's are designed with ease of shipment and reassembly in mind. Numerous shipping options (single piece or split) are available :

Shipping

- Single Piece Shipping up to 22'W x 65'L
- Shipping Split Shipping up to 16'W x 12'11"H x 40'L (optimum standard)*
- Custom shipping splits available (optional)

Reassembly

- Single Piece Plug & Play
- Shipping Splits w/ Field Termination/Junction Boxes

FACTORY TESTING & FIELD SERVICE

Achieve peace of mind in knowing that your PDC is fully functioning as designed, both at the factory and in the field. Myers provides the following testing :

Factory Testing

- ANSI C37.20 Production Test
- Current Injection
- CT Ratio and Polarity
- Mechanical Operation
- Dielectric Test
- Sequence Test
- Additional Testing (optional)

Field Service

- Installation Supervision
- Start-Up Services
- Commissioning Services
- Training
- Recommended Spare Parts
- Repair & Replacement
- Preventive Maintenance Services

** Other Configurations Available*

PREMIUM PRODUCTS COME WITH PREMIUM SUPPORT.

Myers Power Products is committed to delivering the best products with the best product support throughout North America. Our pursuit of excellence continues long after our products are delivered and placed into service.

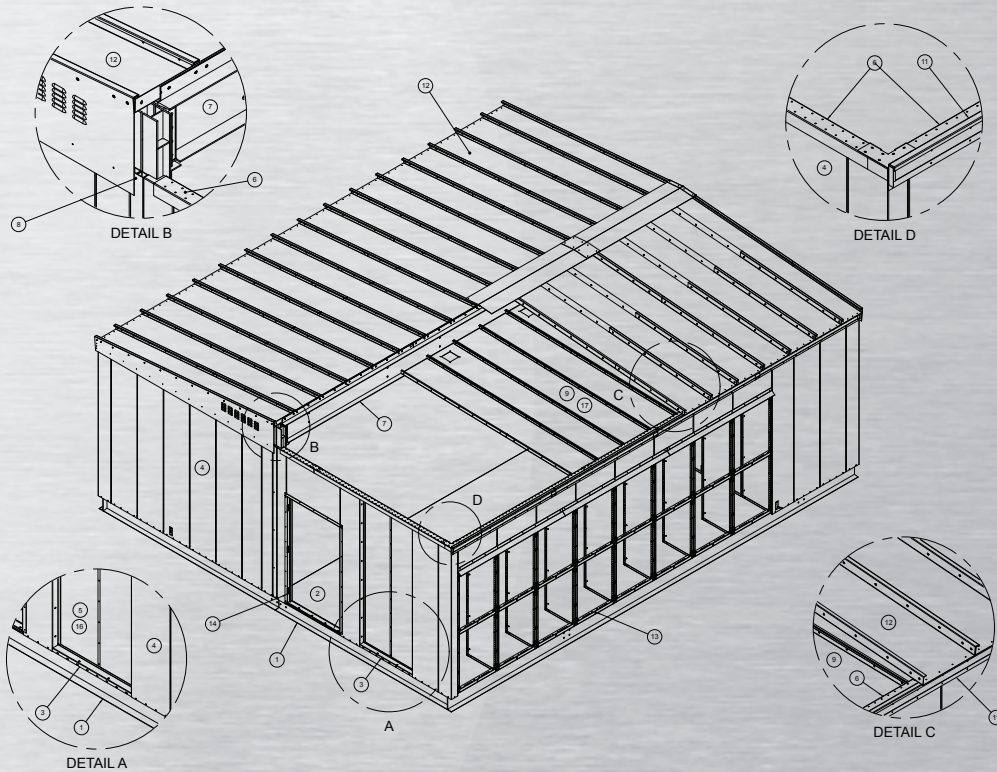
OUR NORTH AMERICAN NETWORK IS QUALITY DRIVEN:

- Myers Power Products customer support system - with locations in California, Ohio, and Pennsylvania, Myers provides live assistance from a dedicated staff of professional representatives for before and after service support, for engineering support, for quality replacement parts, and for premium hands-on field service support for all of Myers' equipment. Peace of mind, guaranteed
- Myers' network of premium sales representatives and distributors located throughout North America are highly trained to assist you; providing you a one-stop-shop for acquisition, maintenance, and warranty services now and well into the future.



- Corporate Locations
- Medium Voltage
- Low Voltage
- Myers Ryco
- Myers Pedestals
- Pacific Utility Products
- Lighting

POWER DISTRIBUTION CENTER (PDC) DESIGN SPECIFICATIONS							
SPECIFIC ASSEMBLY	MATERIAL	GAUGE	COATING	FEATURES			
1 Base construction	12" structural channel and wide flange.	N/A	ANSI 70 grey, Acrylic Enamel overcoat, Kemflash primer, oil base undercoating. Thickness is 6-8 mils.	All exposed members are sandblasted. All welded construction.			
2 Base floorplate	Steel Plate	7 gauge HRPO	ANSI 70 grey, Acrylic Enamel overcoat, Kemflash primer.	Plate is welded to structural base members.			
3 Wall Sills	Steel	11 gauge HRPO	ANSI 70 grey, electrostatic power coat paint.	Wall Sills are plug welded to the perimeter base frame.			
4 Exterior Wall Panels	Steel, formed in column configuration.	14 gauge HRPO	ANSI 70 grey, electrostatic power coat paint.	Are bolted to the wall sills with 3/8" hardware. Wall panels are bolted to each other with interior fasteners. Each wall panel seam is gasketed.			
5 Interior wall skins	Steel	16 gauge HRPO	White, electrostatic power coat paint.	Are fastened with tek screws to the exterior wall panels.			
6 Bearing channels	Steel	11 gauge HRPO	White, electrostatic power coat paint.	Are fastened with tek screws to the exterior wall panel assembly and bearing channels.			
7 Ridge beam	15" minimum Structural channel	N/A	ANSI 70 grey, Acrylic Enamel overcoat, Kemflash primer.	Ridge beam is bolted to the ridge beam support columns.			
8 Ridge beam support column	W4 x 13 structural member	N/A	ANSI 70 grey, Acrylic Enamel overcoat, Kemflash primer.	Ridge beam support column is welded to the perimeter base frame. This is only used at the PCC split.			
9 Interior ceiling	Steel, formed	14 gauge HRPO	White, electrostatic power coat paint.	Lay in ceiling, tek screwed to each other.			
10 Lateral bracing.	3" x 3" x 3/16" steel angle	N/A	ANSI 70 grey, Acrylic Enamel overcoat, Kemflash primer.	Welded between ridge beam and bearing channels.			
11 Side wall roof support	Steel, formed	11 gauge HRPO	ANSI 70 grey, electrostatic power coat paint.	Are fastened with tek screws to the exterior wall panel assembly.			
12 Roof Panel	Steel, standing seam	12 gauge HRPO	ANSI 70 grey, electrostatic power coat paint.	Are fastened with tek screws to the side wall roof support and bolted to the ridge beam. All roof sheets are bolted to each other. 3/8" hardware used. Ridge split is flashed with 16 gauge steel.			
13 Equipment doors	Steel, formed	11 gauge HRPO	ANSI 70 grey, electrostatic power coat paint.	4 stainless steel hinges per door bolted to the wall panel assembly with 3 point latching and door stop.			
14 Man doors	Steel, 42" x 84" x 1-3/4"	18 gauge	ANSI 70 grey, Acrylic Enamel overcoat.	Thumb controlled latch, insulated with rim, single point panic device and door closer.			
15 Base insulation	Foamed sprayed	N/A		Minimum 2" thickness applied.			
16 Wall insulation	Rolled fiberglass with vapor barrier.			R13 insulation value			
17 Roof insulation	Rolled fiberglass with vapor barrier.			R19 insulation value			



	PDC TYPE						
	Standard	Blast Resistant	Skid Mount	Arc Resistant	Arctic Design	"Class I Div II"	DC
CONSTRUCTION							
14 Gauge	S	N/A	S	S	S	S	S
12 Guage	A	N/A	A	A	A	A	A
11 Guage	A	N/A	A	A	A	A	A
Outer Skin Thickness ETO	A	S	A	A	A	A	A
Galvanneal	S	S	S	S	S	S	A
Cold Rolled Steel	S	S	S	S	S	S	S
304/316L Stainless Steel	A	A	A	A	A	A	A
Marine Grade Aluminum Type 5052	A	A	A	A	A	A	A
FINISH							
Electrostatic Powder Coat ANSI Grey 70	S	S	S	S	S	S	A
Electrostatic Powder Coat ANSI Grey 61	A	A	A	A	A	A	S
Custom Color	A	A	A	A	A	A	A
HVLP Wet Spray	A	A	A	A	A	A	A
Anti-Graffiti Finish	A	A	A	A	A	A	A
7000 Hour Salt Spray	A	A	A	A	A	A	A
WIND RATING							
100 MPH	S	S	S	S	S	S	S
120-180 MPH	A	A	A	A	A	A	A
SEISMIC RATING							
Zone 4 (D)	S	S	S	S	S	S	S
E-F	A	A	A	A	A	A	A
WALL CONSTRUCTION							
Bolted Interlocking	S	N/A	S	S	S	S	S
Welded Panel	A	S	A	A	A	A	A
Siding	A	A	A	A	A	A	A
WALL INSULATION							
R-13	S	S	S	S	N/A	S	S
R-19 thru R-38	A	A	A	A	S	A	A
ROOF CONSTRUCTION							
Interlock Bolted Standing Seam	S	N/A	S	S	N/A	S	S
Roof Cap	A	N/A	A	A	N/A	A	A
Welded Panel	A	S	A	A	S	A	A
Cold Roof	A	A	A	A	S	A	A
ROOF CONSTRUCTION							
R-19	S	S	S	S	N/A	S	S
R-38	A	A	A	A	S	A	A
FIRE RATING							
None	S	S	S	S	S	S	S
1 Hour	A	A	A	A	A	A	A
2 Hour	A	A	A	A	A	A	A
FIRE RATING							
MV Metal Clad	Myers, Schneider Electric, Eaton, ABB, GE, Siemens			ABB	Myers, Schneider Electric, Eaton, ABB, GE, Siemens		
Protective Relay	Schweitzer, ABB, Schneider Electric, Basler, GE						Myers
DC	Myers						
Load Interrupter	Schneider Electric, Eaton, ABB						
LV Drawout Power	ABB, Eaton, GE, Schneider Electric, Siemens						
LV Fixed MCCB							
UL LABEL							
PDC Structure	A	A	A	A	A	A	A
MV Switchgear	A	A	A	A	A	A	A
LV Switchgear	A	A	A	A	A	A	A
LV Switchboards & Panelboards	S	S	S	S	S	S	S
MV Circuit Breakers	S	S	S	S	S	S	S
LV Circuit Breakers	S	S	S	S	S	S	S



MYERS POWER PRODUCTS

For more than 60 years, Myers Power Products has been and continues to be, a global leader in the supply and integration of a wide range of electrical products. As both a manufacturer and systems integrator, we are trusted by thousands of companies worldwide to provide solutions ranging from medium voltage AC and DC power distribution switchgear and equipment, custom designed enclosures & power distribution centers, low voltage switchboards and panelboards to emergency lighting inverters, backup power systems and electrical service pedestals.

With manufacturing facilities throughout North America, Myers Power Products is uniquely positioned to serve you with the quality solutions you desire for your electrical distribution needs. Our in-house design support, engineering, fabrication, assembly and integration processes provide the expertise and flexibility to deliver both standard and customized, engineered-to-order solutions in a timely and professional manner; giving you the peace of mind that your project will be completed on-time and to specification, regardless of complexity.

Once your product is on site, our highly trained Field Service Team is ready and available when you need them. Myers' expert technicians can handle any need, ranging from start-up and commissioning to training on new equipment or troubleshooting, repair, and maintenance on installed equipment.

Spare Parts and Service Contracts are also available to provide you with the peace of mind that your equipment will continue to operate safely and optimally well into the future.

RELIABILITY, DEPENDABILITY, FLEXIBILITY...TRUST IN THE POWER OF MYERS!

Myers Power Products has made every reasonable effort to ensure that the information contained in this brochure is accurate. However, we accept no responsibility for any errors or omissions. We reserve the right to modify designs, characteristics and products at any time for any reason with or without notice.

© Myers Power Products inc. 2014. - Printed in USA



Myers Power Products

2950 East Philadelphia Street, Ontario, CA 91761
Toll Free: 866-MY-MYERS
Main: 909-923-1800
Fax: 909-923-1806
info@myerspower.com
www.myerspowerproducts.com



5-38KV LOAD INTERRUPTER SWITCHGEAR

PRODUCT DESCRIPTION

The **MYERS - RSE-SIERRA INTERRUPTER SWITCHGEAR** offers a reliable solution for load break switch applications in the medium voltage range.

FEATURES

- Stored energy switch operating mechanism
- Switch drive shaft and connecting linkage
- Permanently attached handle with padlocking provisions in open and closed positions

APPLICATIONS

- As an incoming line and feeder distribution device
- As a motor disconnect
- As an individual Service Entrance Equipment (SES)
- As a transformer primary disconnect / Substation



RATINGS

Nominal Voltage (kV)	4.16			13.8			16.5
Maximum Design Voltage (kV)	4.76			15			17
BIL (kV)	60			95			95
Frequency (Hz)	50/60			50/60			50/60
Continuous Amperes	600	1200	1200	600	1200	1200	600
Interrupting Amperes	600	1200	1200	600	1200	1200	600
Fault Close (kA asymmetrical rms)	40	61	61	40	61	61	40
Fault Close (kA symmetrical rms)	25	38	38	25	38	38	25
Momentary Current (kA asymmetrical 10 Cycle)	40	61	80	40	61	80	40
Capacitor Switching (kVAR)	2400	2400	n/a	2400	2400	n/a	n/a
Short-Time Current (kA 2 seconds)	25	38	48	25	38	48	25
Dielectric Withstand (kV 1 minute)	19			36			36

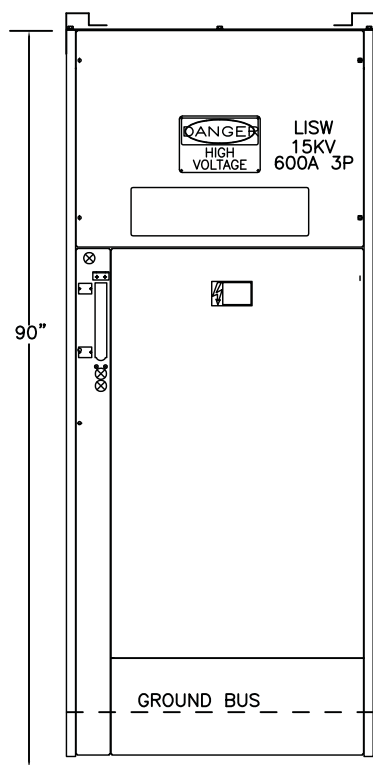


866-MY-MYERS

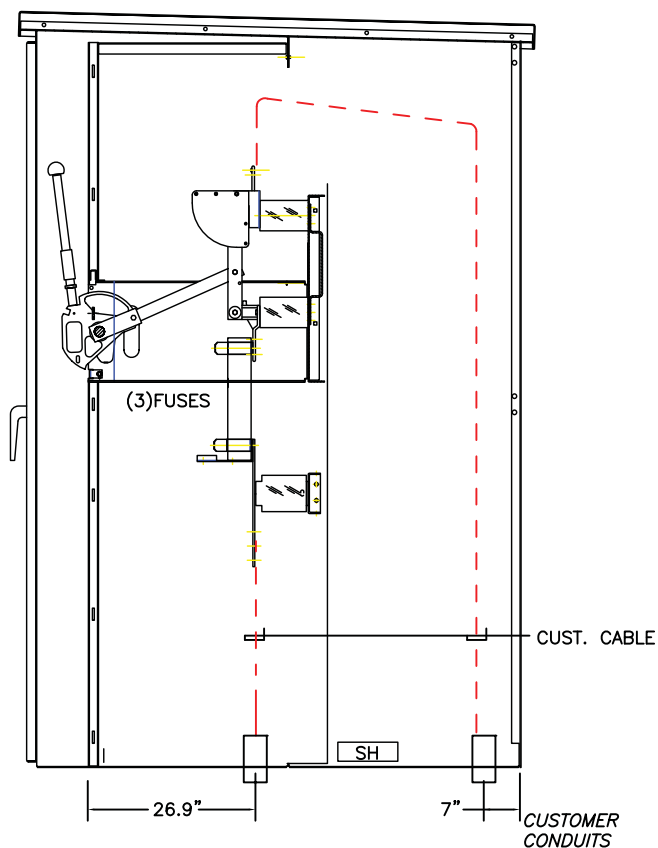
www.myerspower.com

For pricing information : QUOTES-LV@myerspower.com

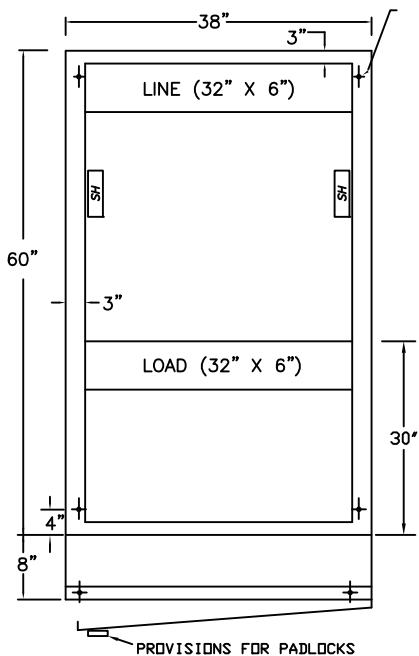
Specifications are subject to change without notice to reflect improvements and upgrades



FRONT ELEVATION
SHOWN WITHOUT OUTER DOOR.



SIDE VIEW



BASE PLAN

STANDARD LAYOUT OF A
5-15kV NEMA 3R SWITCHGEAR

MYERS POWER PRODUCTS

2950 E. Philadelphia St., Ontario, CA 91761 | Tel. **909-923-1800**

www.myerspwrproducts.com

Intellisafe™

Arc Resistant Switchgear 



Medium Voltage MetalClad Switchgear, Internal Arc Resistant

Intellisafe,™ M&I Electric's Generation 2 Arc Resistant Medium Voltage MetalClad Switchgear, provides industry-leading, patent-pending technology to protect personnel and facilities from the energy of an arc flash incident. Designed to minimize operator contact with energized equipment and maximize uptime, Intellisafe incorporates automated racking, non-invasive real time monitoring, operational data analysis and reporting, optional wireless communication, and more.

5-15kV MetalClad Switchgear

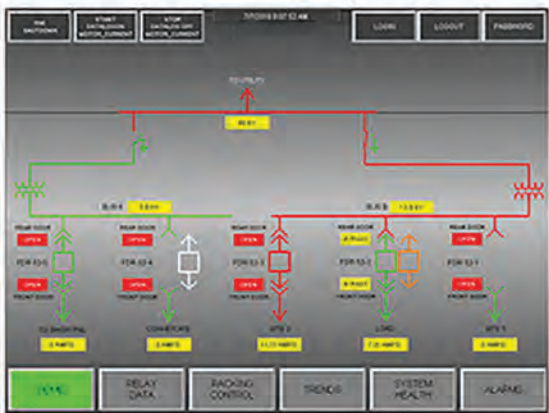
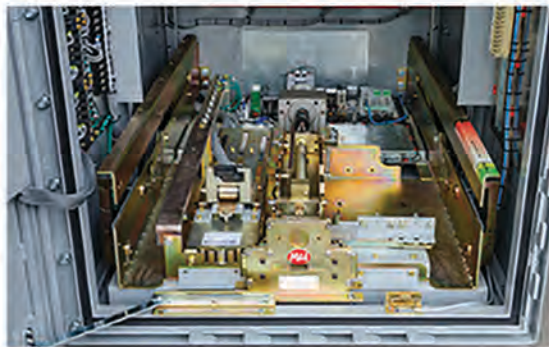
- 4000 A Max Current Rating
- 10 & 11 Gauge Welded Steel
- Type 2B Construction
- 100% PIP Specification Compliant
- IEEE C37.20.7 Type Tested & UL Witnessed
- Certified by KEMA Test Lab
- UL Labeled

Designed to Maximize Operator Safety

- Front & Rear Door Interlocks
- Mechanical Through Door Trip & Lock Out
- Integrated Electrical Breaker & VT Racking
- IR Windows Included in Tested Design Facilitate Thermal Imaging

HMI Control & Status Monitoring

- Real Time Visualization of Breaker Racking
- Simple Touch Screen Control
- Real Time Data Monitoring & Reporting
- Industrial IoT Enabled for Status & System Health
- Open Architecture
- Optional Wireless Communication



To learn more about Intellisafe, scan here



www.mielectric.com | 713.644.8182



Specifications are subject to change without notice.