

## FOR LEASE

Owned and managed by the Port, the Fabulich Center is located just minutes from downtown Tacoma, Fife and Port of Tacoma terminals via Interstate 5 and State Route 509.



### Building Features

- > Class "B" office finishes
- > Views of Mt. Rainer and the Port
- > Ample Parking
- > High-speed internet connectivity (Click! Network or Comcast)

### Building Specifications

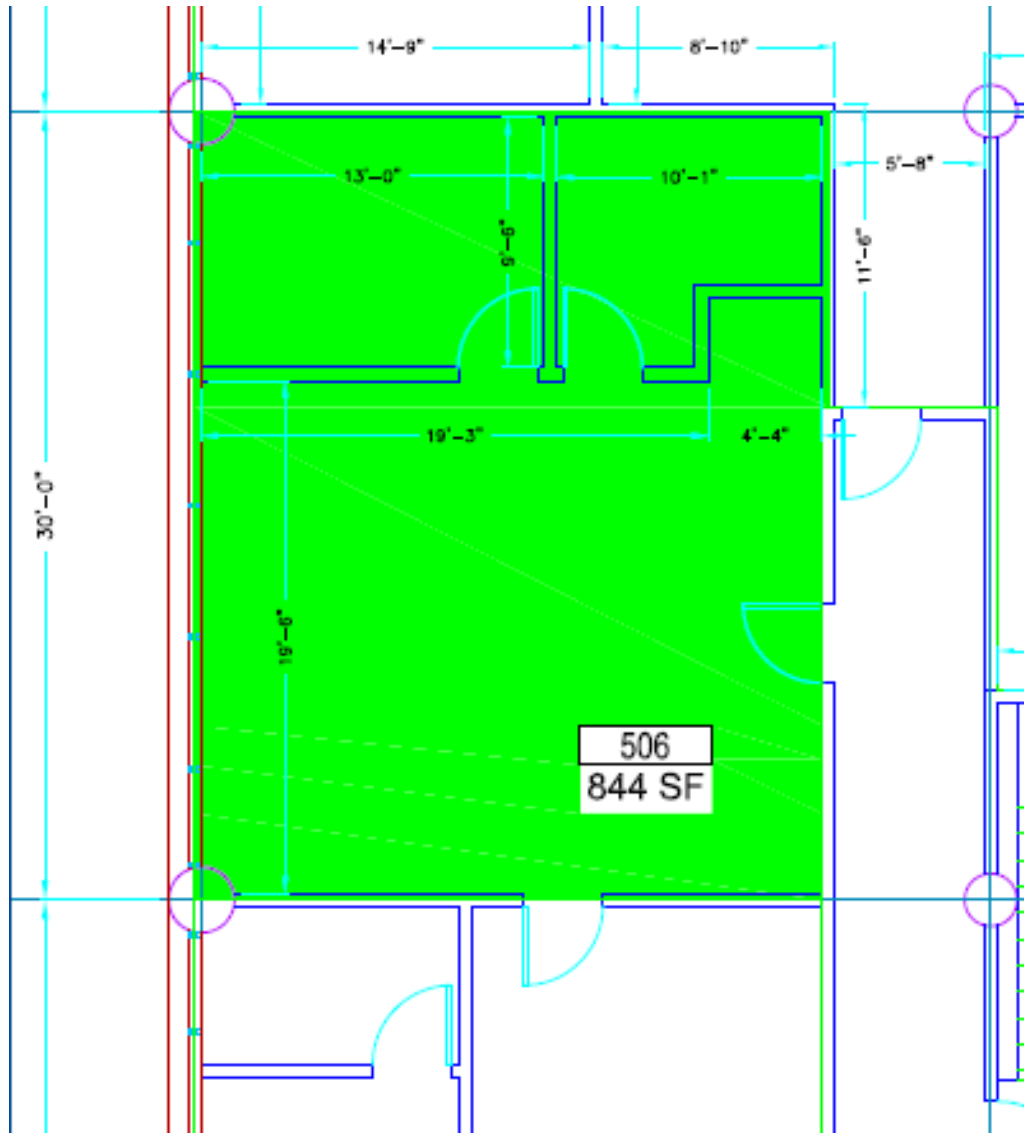
- > **Structural:** Poured concrete frame and core minimizes interior columns and maximizes space
- > **Floor areas:** Five floors, 72,000 gross square feet, 12,900 usable square feet per floor
- > **Entry plaza:** Spacious pedestrian plaza leads from the parking areas to the building, and features colorful year round landscaping
- > **Lobby level:** The atrium lobby is a comfortable waiting area filled with light from clearstory windows
- > **Access:** Located one block north of Pacific Highway 99 and interstate 5's Port of Tacoma Road Exit, and immediately south of SR 509
- > **Elevators:** Two elevators provide service to all floors
- > **Parking:** Convenient tenant and visitor parking surrounds the building on all sides with three building entry points for tenants

### Contact

Annika Bjorkman  
253-830-5302  
[abjorkman@portoftacoma.com](mailto:abjorkman@portoftacoma.com)

# FOR LEASE

Suite 506 - 844 RSF



## Contact:

Scott Francis  
253-383-9407  
sfrancis@portoftacoma.com

Annika Bjorkman  
253-830-5302  
abjorkman@portoftacoma.com